

Crawford County Recorder
Denise Neeves
Fee Book 2012-2847
12/05/2012 8:10:41AM
PLC PLAT CORNER CER
Book: Page: # Pages: 1
Total Fees: \$7.00

PREPARED BY & RETURN TO MIKE SCHULTE, SNYDER & ASSOCIATES, INC. 1751 MADISON AVE, COUNCIL BLUFFS, IOWA 51503 (712) 322-3202

UNITED STATES PUBLIC LAND SURVEY CORNER CERTIFICATE OF

Land Survey Monuments situated in Section 5, Township 85N, Range 36W, of the Fifth Principal Meridian, CRAWFORD County, Iowa. Previously recorded in INST 2001 - 3692 in County Recorder's Office. (book, page, document number, ect.)

(Show reason for preparing this certificate, the evidence and detailed procedures used in establishing the corner positions and monumentation found or placed.)

Monument Description and Remarks:

SOUTH 1/4 CORNER

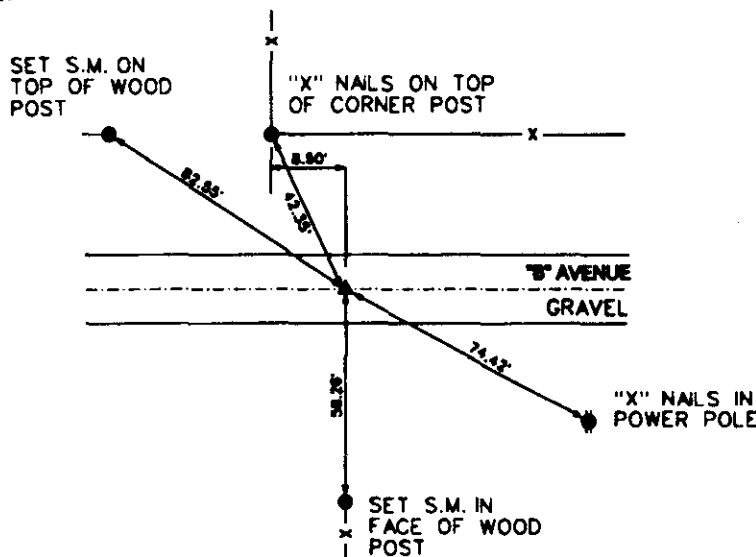
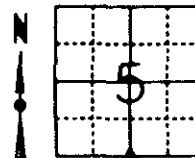
USED TIES AS RECORDED IN INST 2001-3692 TO FIND MONUMENTS AS DESCRIBED. REFERENCES TO THE GATE POST TO THE NORTH & SOUTH HAVE BEEN REMOVED. SO ADDITIONAL TIES HAVE BEEN ADDED.

Plan-View

(Show a minimum of three reference ties to durable physical objects; relevant monuments and physical conditions that will enable recovery of the corner.)

SPC 1A NORTH: US SURVEY FEET
IA RTN DERIVED
NAD83 (CORS96)
EPOCH 2002.000
N: 3539893.00
E: 4435098.27

SOUTH 1/4 CORNER
FOUND 1" IRON PIN 8" DEEP



I hereby certify that this land surveying document was prepared and the related surveying work was performed by me or under my direct supervision and that I am a duly Licensed Land Surveyor under the laws of the State of Iowa.

Mike Schulte
Mike Schulte, PLS

License Number 17979
My License Renewal Date is December 31, 2013

Pages or sheets covered by this seal:
SHEET 1 OF 1

List Corners to be Indexed			
Corners	Section	Twp	Range
S 1/4 CORNER	5	85	36
N 1/4 CORNER	8	85	36

TECH: RLC

PN: S-85-36 (112.0980)

DATE: 12/03/12