

Instrument #: 2026-0008
 01/05/2026 12:33:59 PM Total Pages: 1
 PLC PLAT COR CERT
 Recording Fee: \$7.00 Transfer Tax: \$0
 Sara Meseck, Recorder, Crawford County Iowa



WILKE LAND SURVEYING INC. 401 1800th Street Panama, Iowa 51562 (712)579-0551

UNITED STATES PUBLIC LAND SURVEY CORNER CERTIFICATE

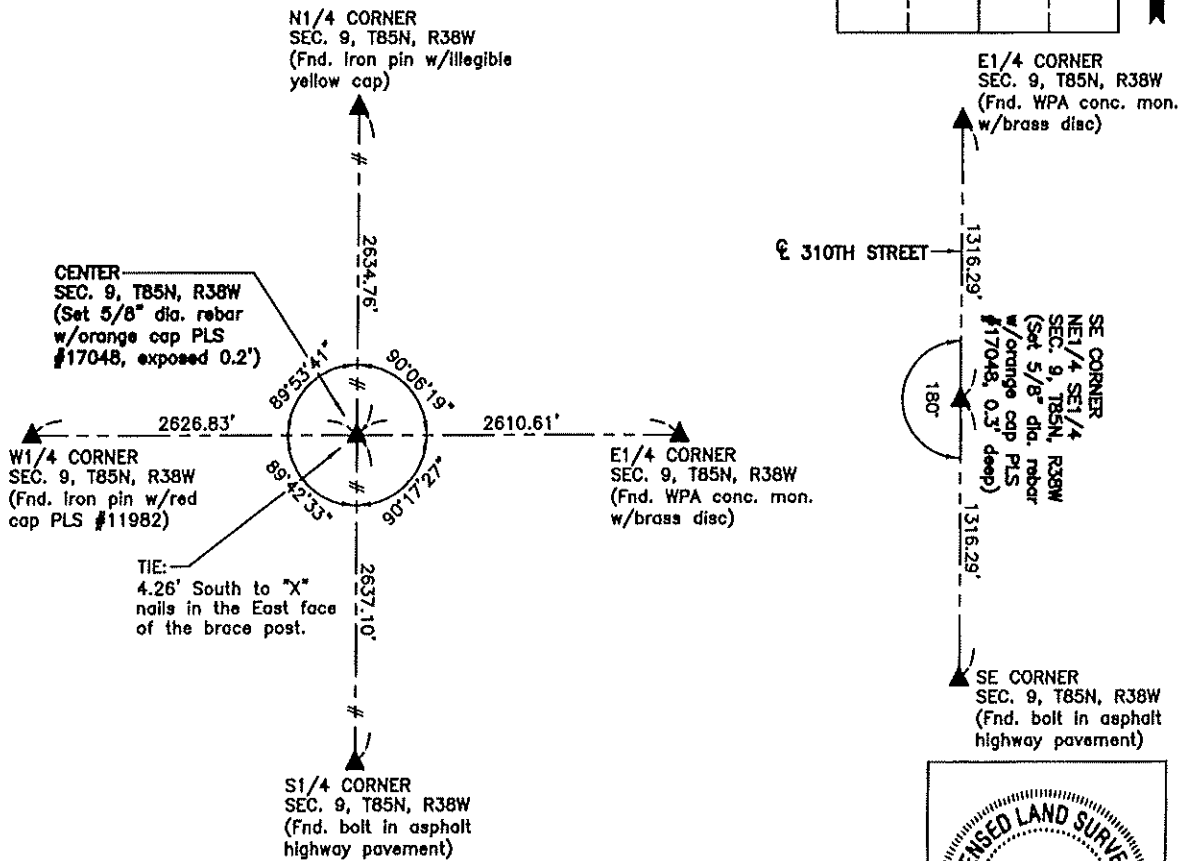
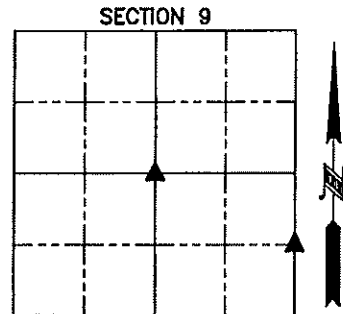
SECTION 9 TOWNSHIP 85N RANGE 38W COUNTY Crawford

Reason for Certificate: Survey in the E1/2

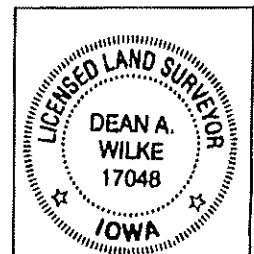
Monument Description and Remarks:

CENTER - Set a 5/8" diameter by 24" long rebar with an orange cap PLS #17048 (exposed 0.2') on line between the E1/4 Corner & the W1/4 Corner, and in the existing North/South fence line. The set monument is ±4.6' South of the rotted off fence division post and 9.11' East of a straight line between the N1/4 Corner & S1/4 Corner.

SE CORNER NE1/4 SE1/4 - Set a 5/8" diameter by 24" long rebar with an orange cap PLS #17048 (0.3' deep) at the midpoint of the East line of the SE1/4. The monument location fits well with the centerline of 310th Street North & South. No suitable ties available.



ALL DISTANCES ARE HORIZONTAL



List Corners to be Indexed			
Corner	Section	Twp.	Range
CENTER	9	85N	38W
SE CORNER NE1/4 SE1/4	9	85N	38W

I hereby certify that this land surveying document was prepared and the related survey work was performed by me or under my direct personal supervision and that I am a duly licensed Land Surveyor under the laws of the State of Iowa.

Dean A. Wilke 1/04/26
 Dean A. Wilke Date

License number 17048
 My license renewal date is December 31, 2027
 Pages or sheets covered by this set: This page only