

INDEXED
 FOLLOW UP
 RECORDED
 SCHEDULED

Crawford County Recorder
 Denise Meeves
Fee Book 2010-1835
 09/07/2010 @10:28AM
 PLC PLAT CORNER CER # Pages: 1
 Book: Page: \$9.00
 Total Fees:

WARDER C. HILLHOUSE, JR. MHF ENGINEERING P.C. 300 W. MCKINLEY JEFFERSON, IA. (515)386-4101

UNITED STATES PUBLIC LAND SURVEY CORNER CERTIFICATE OF

Land Survey Monuments in Section 2, Township 82, Range 40,
 of the Fifth Principal Meridian, CRAWFORD County, Iowa.
 Previously recorded in _____ in County Recorder's Office.
 (book, page, document number, etc.)

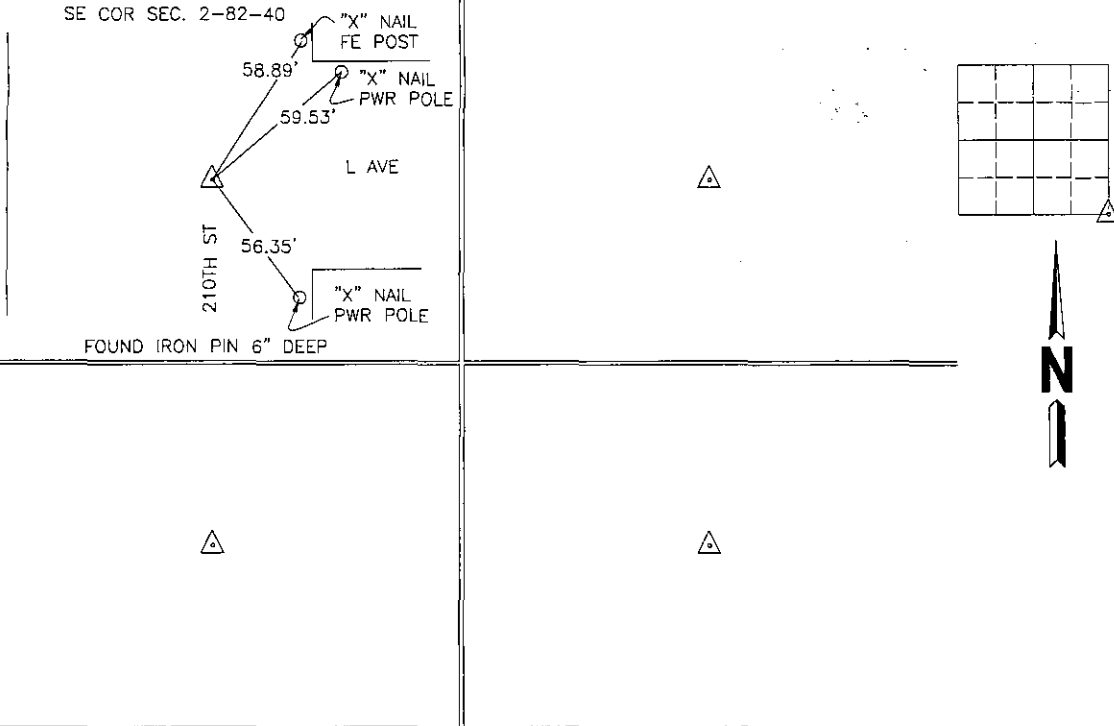
(Show reason for preparing this certificate, the evidence and detailed procedures used in establishing the corner positions and monumentation found or placed.)

Monument Description and Remarks:

CORNER WAS LOCATED FOR SURVEY IN THE SOUTHEAST QUARTER OF THE SOUTHEAST QUARTER OF SEC. 2-82-40.

PLAN - VIEW

(Show a minimum of three reference ties to durable physical objects, relevant monuments and physical conditions that will enable recovery of the corner.)



I hereby certify that this land surveying document and the related survey work was performed by me or under my direct personal supervision and that I am a duly licensed land surveyor under the laws of the state of Iowa.

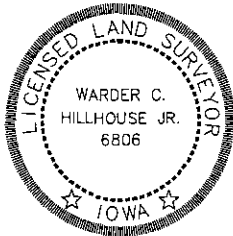
Signature: *Warder C. Hillhouse Jr.*
 Warder C. Hillhouse, Jr.

Date: *9/2/10* Lic. No. 6806

License Renewal Dec. 31, 2011

Date Surveyed: 8/10

Seal



List Corners to be Indexed			
Corners	Section	Twp	Range
SE COR	2	82	40

File No. 10088-1



M.H.F. ENGINEERING, P.C.
 ENGINEERS - LAND SURVEYORS
 Jefferson, Iowa 50129 Ph. (515)386-4101