

INDEXED km  
 FOLLOW UP \_\_\_\_\_  
 PROOFED \_\_\_\_\_  
 SCANNED \_\_\_\_\_

Instrument #: 2020-1357  
 07/13/2020 11:23:01 AM Total Pages: 1  
 PLC PLAT COR CERT  
 Recording Fee: \$7.00 Transfer Tax: \$0  
 Denise Neeves, Recorder, Crawford County Iowa



PREPARED BY - JOSEPH P. RUESCHENBERG - SUNDQUIST ENGINEERING - 120 S. MAIN, DENISON, IOWA 51442 - PHONE (712) 263-8118

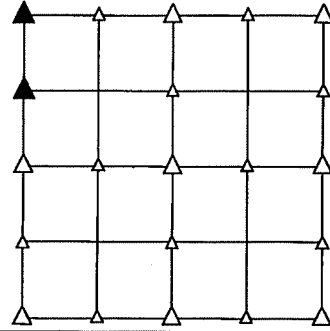
UNITED STATES PUBLIC LAND SURVEY CORNER CERTIFICATE  
 OF

LAND SURVEY MONUMENT SITUATED IN SECTION 15, T 82 N, R 40 W OF  
 THE 5TH P.M., CRAWFORD COUNTY, IOWA.  
 PREVIOUSLY RECORDED IN BOOK \_\_\_\_\_, PAGE \_\_\_\_\_, OTHER \_\_\_\_\_

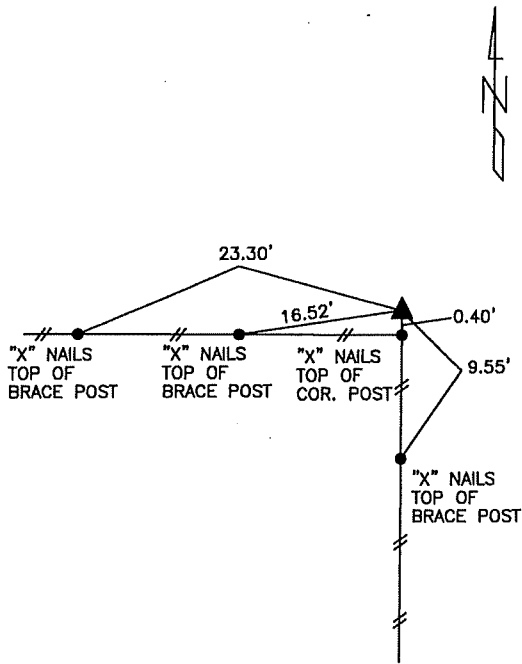
MONUMENT DESCRIPTION AND REMARKS

NW CORNER  
 SW1/4 NW1/4 - FOUND 5/8" DIA. IRON PIN 0.2' DEEP.

NW CORNER - FOUND 5/8" DIA. IRON PIN ON NORTH SIDE OF  
 CORNER POST 9" ABOVE GROUND. CM IS 12" DEEP.

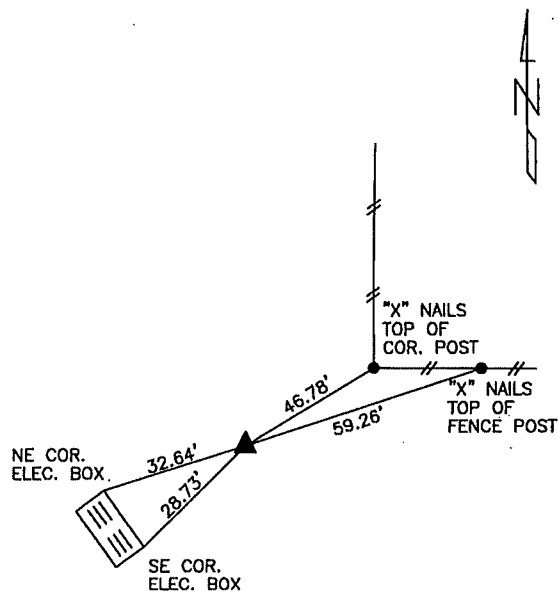


PLAN VIEW SHOWING RELATIVE LOCATION OF MONUMENT AND REFERENCE POINTS.



DISTANCES PLUMB CHAINED

NW CORNER SECTION 15-82-40



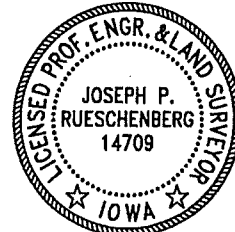
DISTANCES PLUMB CHAINED  
 NW CORNER SW1/4 NW1/4  
 SECTION 15-82-40

I HEREBY CERTIFY THAT THIS LAND SURVEYING DOCUMENT WAS PREPARED  
 AND THE RELATED SURVEY WORK WAS PERFORMED BY ME OR UNDER MY  
 DIRECT PERSONAL SUPERVISION AND THAT I AM A DULY LICENSED LAND  
 SURVEYOR UNDER THE LAWS OF THE STATE OF IOWA.

Joseph P. Rueschenberg 6-16-2020  
 JOSEPH P. RUESCHENBERG DATE

IA LICENSE NO. 14709

EXP. DATE DECEMBER 31, 2020



SE PROJECT NO. 22420  
 DRAWN BY: LLL