

INDEXED _____
 FOLLOW UP _____
 PROOFED MC
 SCANNED _____

REC009230



Crawford County Recorder Denise Meeves
 FEE BOOK 2006-0237 1/31/2006 @ 09:32AM
 PIC PLAT CORNER CERBook: Page: #: 1
 Total Fees: \$7.00

WARDER C. HILLHOUSE, JR. MHF ENGINEERING P.C. 300 W. MCKINLEY JEFFERSON, IA. (515)386-4101
UNITED STATES PUBLIC LAND SURVEY CORNER CERTIFICATE OF

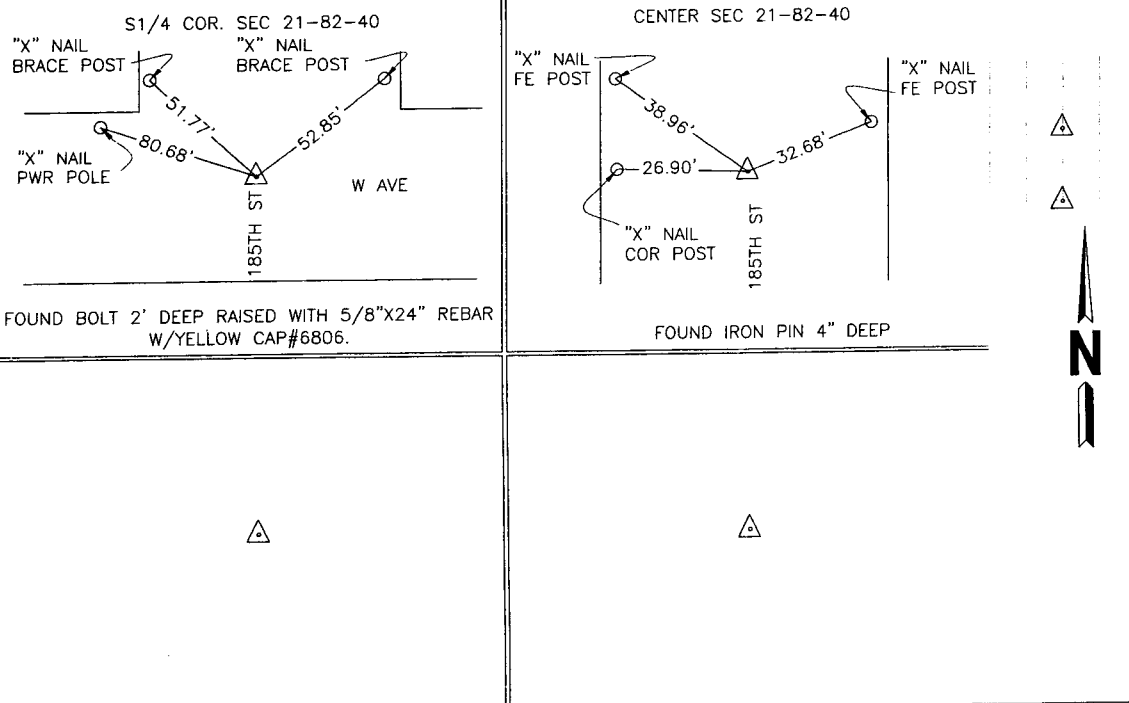
Land Survey Monuments in Section 21, Township 82, Range 40, of the Fifth Principal Meridian, CRAWFORD County, Iowa.
 Previously recorded in _____ in County Recorder's Office.
 (book, page, document number, etc.)

(Show reason for preparing this certificate, the evidence and detailed procedures used in establishing the corner positions and monumentation found or placed.)

Monument Description and Remarks: CORNERS LOCATED FOR SURVEY WORK IN SECTION.

PLAN - VIEW

(Show a minimum of three reference ties to durable physical objects, relevant monuments and physical conditions that will enable recovery of the corner.)



FOUND BOLT 2' DEEP RAISED WITH 5/8"X24" REBAR W/YELLOW CAP#6806.

FOUND IRON PIN 4" DEEP

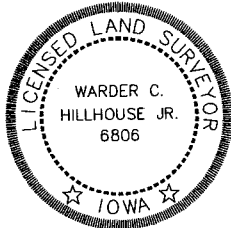
I hereby certify that this land surveying document and the related survey work was performed by me or under my direct personal supervision and that I am a duly licensed land surveyor under the laws of the state of Iowa.

Signature: Warder C. Hillhouse Jr.
 Warder C. Hillhouse, Jr.

Date: 1/27/06 Lic. No. 6806

License Renewal Dec. 31, 2007
 Date Surveyed: 1/26/06

Seal



List Corners to be Indexed

| Corners | Section | Twp | Range |
|-----------|---------|-----|-------|
| S1/4 COR. | 21 | 82 | 40 |
| CENTER | 21 | 82 | 40 |

File No. 06015-1



M.H.F. ENGINEERING, P.C.
 ENGINEERS - LAND SURVEYORS
 Jefferson, Iowa 50129 Ph. (515)386-4101