

INDEX SM  
 SCAN \_\_\_\_\_  
 FOLLOW UP \_\_\_\_\_  
 PROOF \_\_\_\_\_

Instrument #: 2022-0975  
 04/12/2022 09:48:38 AM Total Pages: 1  
 PLC PLAT COR CERT  
 Recording Fee: \$7.00 Transfer Tax: \$0  
 Denise Meeves, Recorder, Crawford County Iowa



PREPARED BY - JOSEPH P. RUESCHENBERG - SUNDQUIST ENGINEERING - 120 S. MAIN, DENISON, IOWA 51442 - PHONE (712) 263-8118

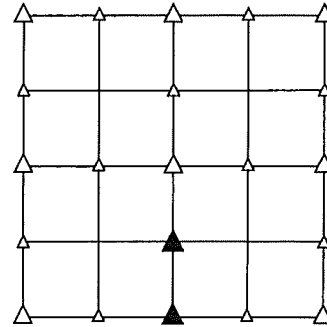
UNITED STATES PUBLIC LAND SURVEY CORNER CERTIFICATE  
 OF

LAND SURVEY MONUMENT SITUATED IN SECTION 16, T 82 N, R 40 W OF  
 THE 5TH P.M., CRAWFORD COUNTY, IOWA.  
 PREVIOUSLY RECORDED IN BOOK \_\_\_\_\_, PAGE \_\_\_\_\_, OTHER \_\_\_\_\_

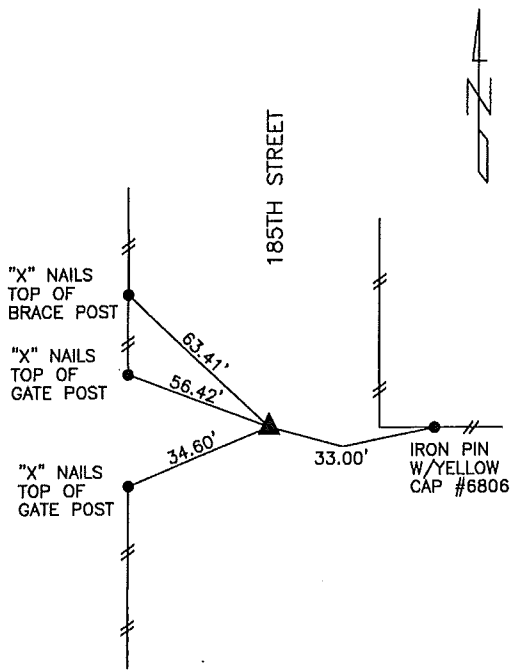
MONUMENT DESCRIPTION AND REMARKS

NW CORNER  
 SW1/4 SE1/4 - FOUND IRON PIN W/YELLOW CAP #6806 0.3' DEEP.

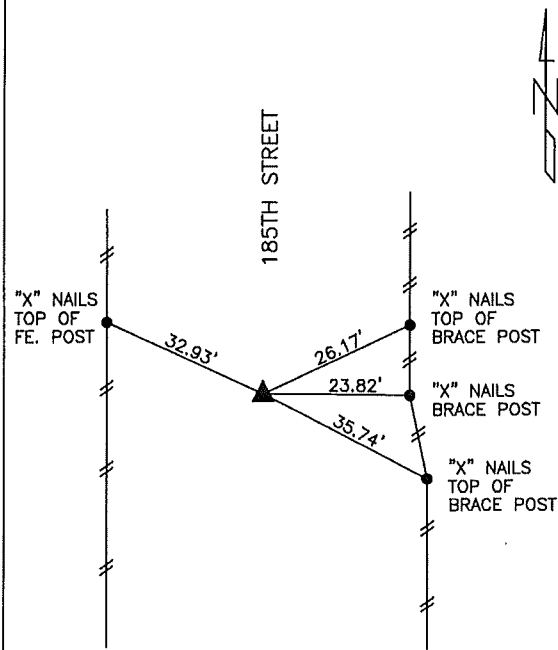
S1/4 CORNER - FOUND 1/2" DIA. IRON PIN 0.3' DEEP.



PLAN VIEW SHOWING RELATIVE LOCATION OF MONUMENT AND REFERENCE POINTS.



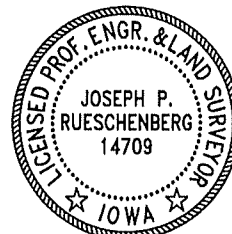
DISTANCES PLUMB CHAINED  
 NW CORNER SW1/4 SE1/4  
 SECTION 16-82-40



DISTANCES PLUMB CHAINED  
 S1/4 CORNER SECTION 16-82-40

I HEREBY CERTIFY THAT THIS LAND SURVEYING DOCUMENT WAS PREPARED AND THE RELATED SURVEY WORK WAS PERFORMED BY ME OR UNDER MY DIRECT PERSONAL SUPERVISION AND THAT I AM A DULY LICENSED LAND SURVEYOR UNDER THE LAWS OF THE STATE OF IOWA.

Joseph P. Rueschenberg 3-1-2022  
 JOSEPH P. RUESCHENBERG DATE  
 IA LICENSE NO. 14709 EXP. DATE DECEMBER 31, 2022



SE PROJECT NO. 21022  
 DRAWN BY: LLL