

FILED DENISON, IOWA  
CRAWFORD COUNTY

INDEXED  
FOLLOW UP  
PROCEED

1999 AU 13 PM 12:23

INST. NO. 99-2262  
DENISE MEEVES, RECORDER  
Denise Meeves  
FEE # 6.00

Mary Gitten, Deputy

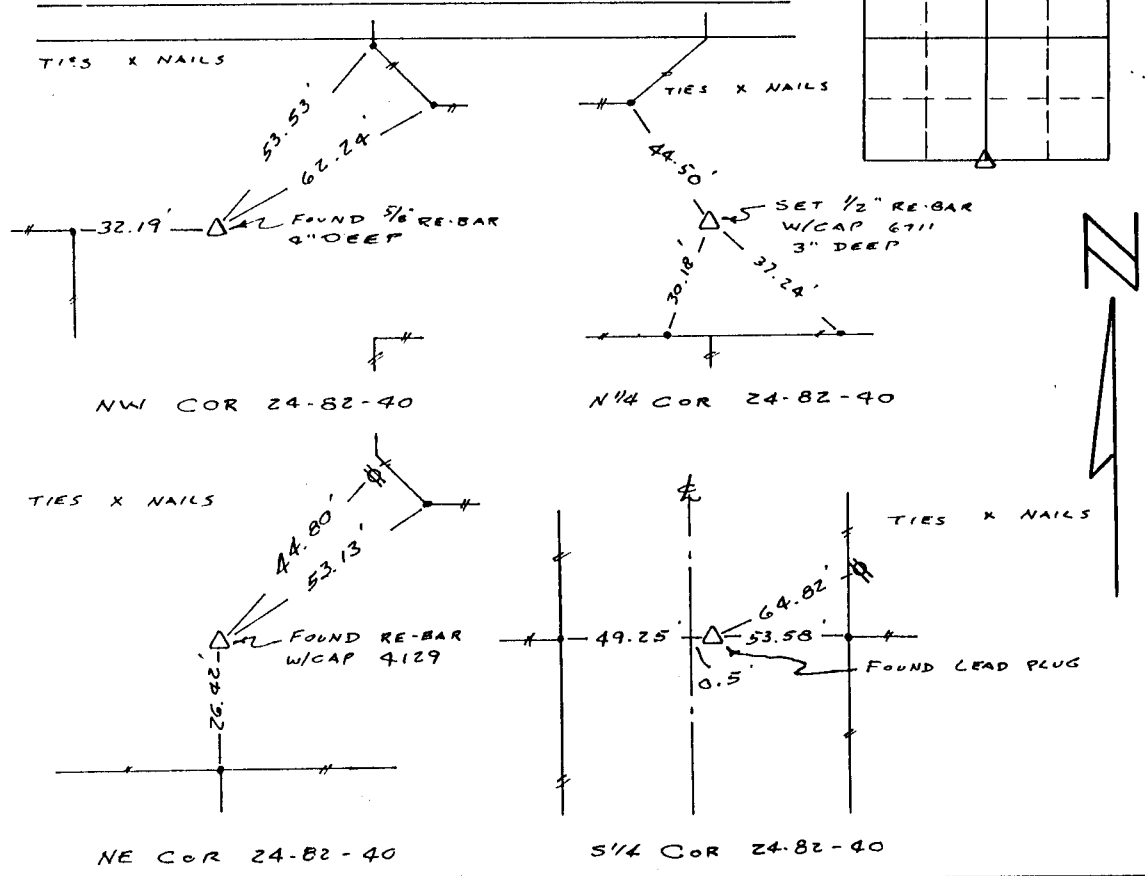
Lloyd D. Wilson 64200 Jackson Rd Atlantic, Iowa 712-243-2113

UNITED STATES PUBLIC LAND SURVEY CORNER CERTIFICATE

Section 24 Township 82 Range 40 County CRAWFORD

Monument description and remarks:

N 1/4 COR. BELIEVE SEC. COR. LOST WHEN  
ROADWAY CULVERT INSTALLED. SET CORNER  
ON LINE NW COR. TO NE COR. AND 1/2 DISTANCE.



I hereby certify that the survey work was completed and this land surveying document was prepared by me or under my direct personal supervision and that I am a duly licensed land surveyor under the laws of the state of Iowa.

Signature: Lloyd D. Wilson  
Lloyd D. Wilson

Date: Aug 10, 1999 License No. 6711

My license renewal date is December 31, 2000

SEAL

Corners	List Corners to be Indexed		
	Section	Twp	Range
NW	24	82	40
N 1/4	24	82	40
NE	24	82	40
S 1/4	24	82	40