

INDEXED
 FOLLOW UP
 PROOFED
 SCANNED

Crawford County Recorder
 Denise Heeves
Fee Book 2012-2519
 10/30/2012 @08:28AM
 PLC PLAT CORNER CER
 Book: Page: # Pages: 1
 Total Fees: \$7.00

PREPARED BY - JOSEPH P. RUESCHENBERG - SUNDGUST ENGINEERING - 120 S. MAIN, DENISON, IOWA 51442 - PHONE (712) 283-8118

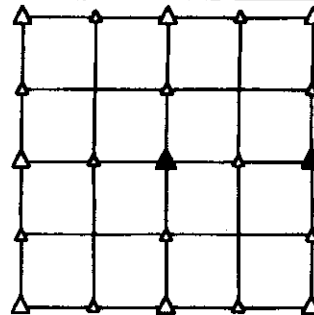
**UNITED STATES PUBLIC LAND SURVEY CORNER CERTIFICATE
 OF**

LAND SURVEY MONUMENT SITUATED IN SECTION 29, T 82 N, R 40 W OF
 THE 5TH P.M., CRAWFORD COUNTY, IOWA.
 PREVIOUSLY RECORDED IN BOOK , PAGE , OTHER

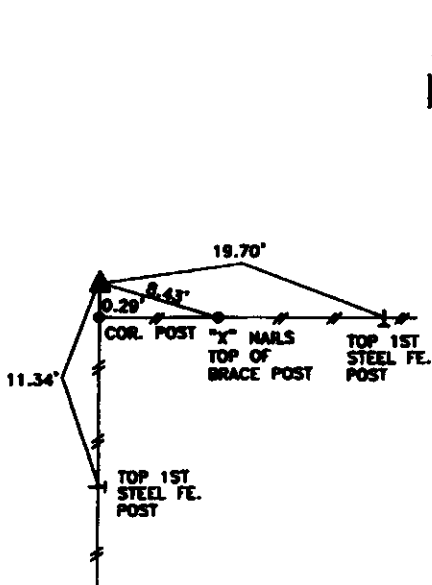
MONUMENT DESCRIPTION AND REMARKS

CENTER - SET 5/8" DIA. X 18" IRON PIN W/ORANGE CAP #14709
 FLUSH, SET FROM LOCAL EVIDENCE.

E1/4 CORNER - FOUND RED SURVEY PIN CAP MAILED TO TOP OF
 CORNER POST.

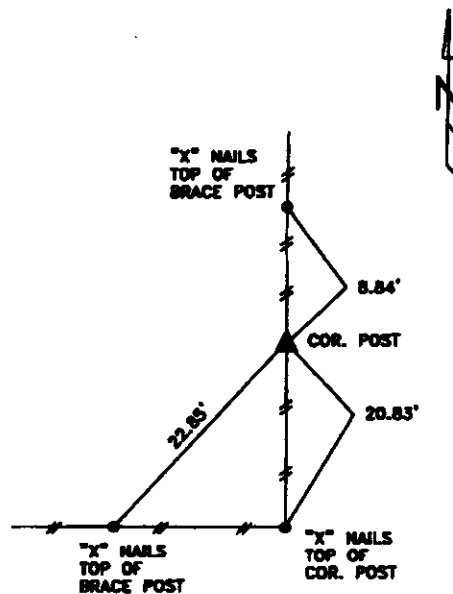


PLAN VIEW SHOWING RELATIVE LOCATION OF MONUMENT AND REFERENCE POINTS.



DISTANCES PLUMB CHAINED

CENTER OF SECTION 29-82-40

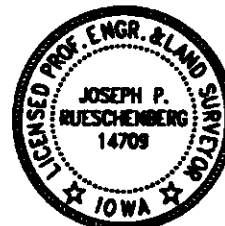


DISTANCES PLUMB CHAINED

E1/4 CORNER SECTION 29-82-40

I HEREBY CERTIFY THAT THIS LAND SURVEYING DOCUMENT WAS PREPARED
 AND THE RELATED SURVEY WORK WAS PERFORMED BY ME OR UNDER MY
 DIRECT PERSONAL SUPERVISION AND THAT I AM A DULY LICENSED LAND
 SURVEYOR UNDER THE LAWS OF THE STATE OF IOWA.

Joseph P. Rueschenberg 10-24-2012
 JOSEPH P. RUESCHENBERG DATE
 IA LICENSE NO. 14709 EXP. DATE DECEMBER 31, 2012



SE PROJECT NO. 24512
 DRAWN BY: LLL