

2002 FEB 28 AM 9:42

HIST. NO. 2002-0773  
 DENISE MEEVES, RECORDER  
*Denise Meeves*  
 FEB 6.00

WARDER C. HILLHOUSE, JR. MHF ENGINEERING P.C. 300 W. MCKINLEY JEFFERSON, IA (515)386-4101

**UNITED STATES PUBLIC LAND SURVEY CORNER CERTIFICATE OF**

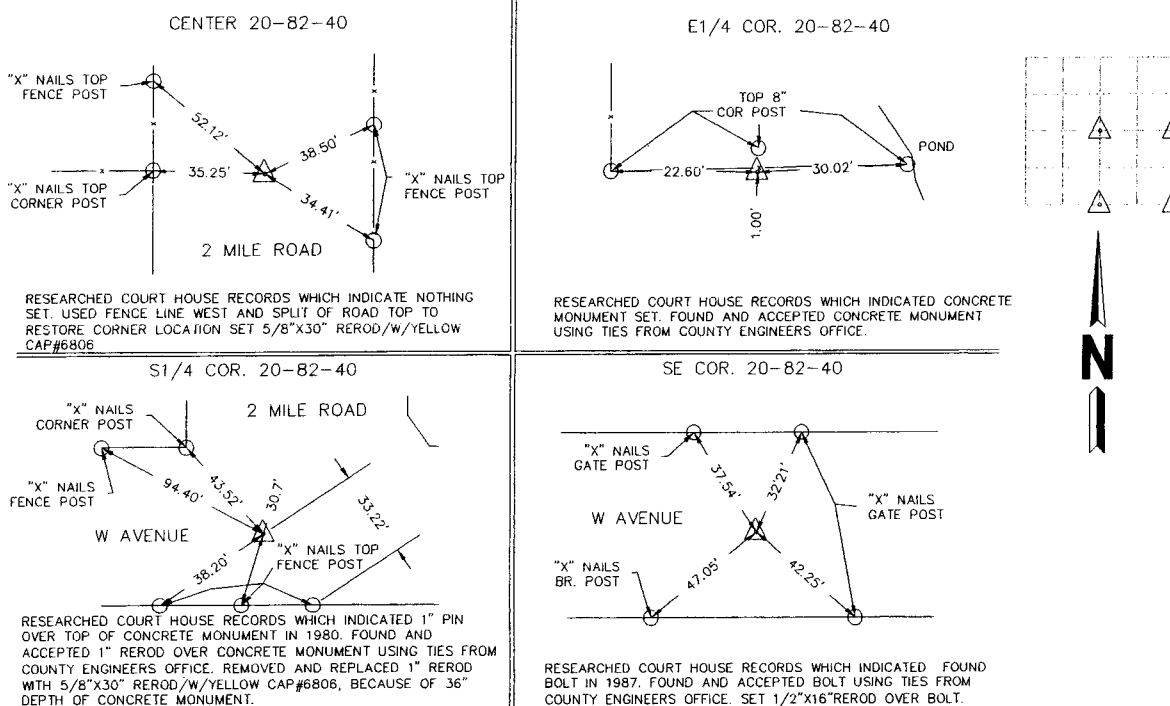
Land Survey Monuments in Section 20, Township 82, Range 40, of the Fifth Principal Meridian, CRAWFORD County, Iowa. Previously recorded in \_\_\_\_\_ in County Recorder's Office.

(Show reason for preparing this certificate, the evidence and detailed procedures used in establishing the corner positions and monumentation found or placed.)

Monument Description and Remarks: CORNERS LOCATED FOR SURVEY WORK IN SECTION.

**PLAN - VIEW**

(Show a minimum of three reference ties to durable physical objects, relevant monuments and physical conditions that will enable recovery of the corner.)



RESEARCHED COURT HOUSE RECORDS WHICH INDICATE NOTHING SET. USED FENCE LINE WEST AND SPLIT OF ROAD TOP TO RESTORE CORNER LOCATION SET 5/8\"X30\" REROD/W/YELLOW CAP#6806

RESEARCHED COURT HOUSE RECORDS WHICH INDICATED CONCRETE MONUMENT SET. FOUND AND ACCEPTED CONCRETE MONUMENT USING TIES FROM COUNTY ENGINEERS OFFICE.

RESEARCHED COURT HOUSE RECORDS WHICH INDICATED 1\" PIN OVER TOP OF CONCRETE MONUMENT IN 1980. FOUND AND ACCEPTED 1\" REROD OVER CONCRETE MONUMENT USING TIES FROM COUNTY ENGINEERS OFFICE. REMOVED AND REPLACED 1\" REROD WITH 5/8\"X30\" REROD/W/YELLOW CAP#6806, BECAUSE OF 36\" DEPTH OF CONCRETE MONUMENT.

RESEARCHED COURT HOUSE RECORDS WHICH INDICATED FOUND BOLT IN 1987. FOUND AND ACCEPTED BOLT USING TIES FROM COUNTY ENGINEERS OFFICE. SET 1/2\"X16\"REROD OVER BOLT.

I hereby certify that land surveying document and the related survey work was performed by me or under my direct personal supervision and that I am a duly licensed land surveyor under the laws of the state of Iowa.

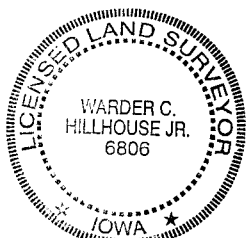
Signature: Warder C. Hillhouse Jr.  
 Name typed or printed: Warder C. Hillhouse, Jr.

Date: 2/27/02 Lic. No. 6806

License Renewal Dec. 31, 2003

Date Surveyed: 02/02

Seal



**List Corners to be Indexed**

Corners	Section	Twp	Range
CENTER	20	82	40
E1/4 COR.	20	82	40
S1/4 COR.	20	82	40
SE COR.	20	82	40

File No. 02019-1



M.H.F. ENGINEERING, P.C.  
 ENGINEERS - LAND SURVEYORS  
 Jefferson, Iowa 50129 Ph. (515)386-4101