

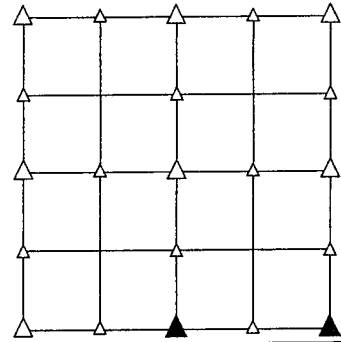
PREPARED BY - PAUL J. ASSMAN - CRAWFORD COUNTY ENGINEER - COURT HOUSE, DENISON, IOWA 51442 - PHONE (712) 263-2449

UNITED STATES PUBLIC LAND SURVEY CORNER CERTIFICATE OF

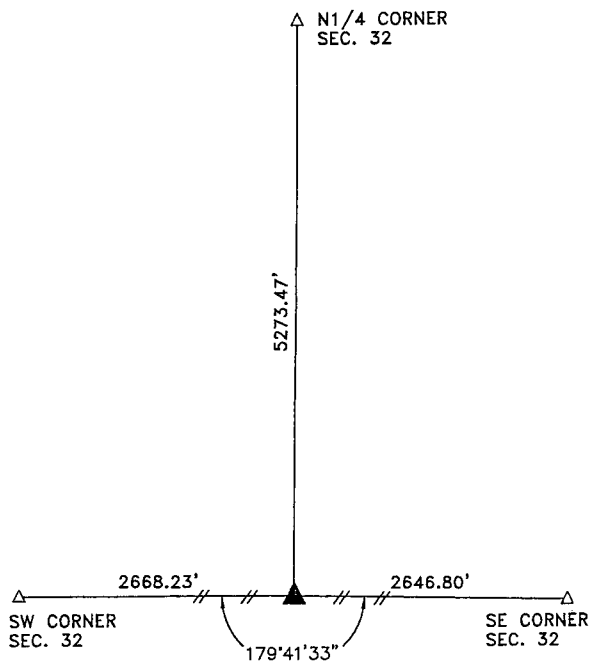
LAND SURVEY MONUMENT SITUATED IN SECTION 32, T 82 N, R 40 W OF
 THE 5TH P.M., CRAWFORD COUNTY, IOWA.
 PREVIOUSLY RECORDED IN BOOK _____, PAGE _____, OTHER _____

MONUMENT DESCRIPTION AND REMARKS

S1/4 CORNER - SET 5/8" DIA. X 18" IRON PIN W/RED CAP #11982, SET IN BROKEN CORNER POST.
 SE CORNER - FOUND CM 4" DEEP, PLACED 5/8" DIA. IRON PIN ALONG SOUTH SIDE OF CM FOR LOCATING.

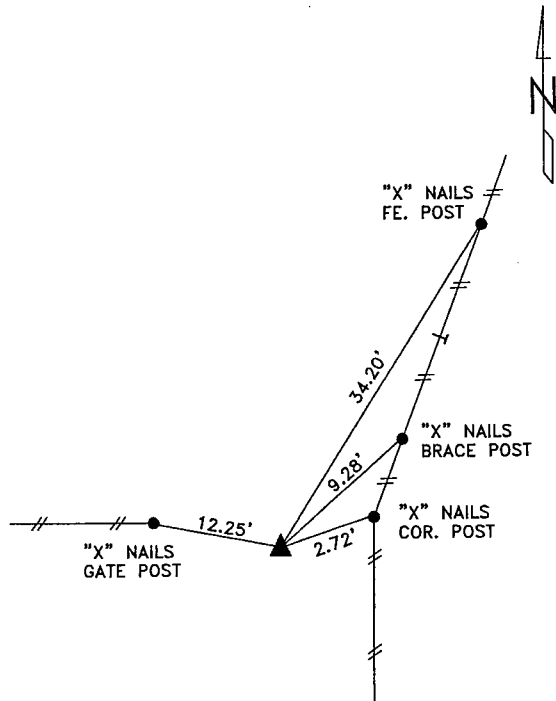


PLAN VIEW SHOWING RELATIVE LOCATION OF MONUMENT AND REFERENCE POINTS.



DISTANCES PLUMB CHAINED

S1/4 CORNER SECTION 32-82-40



DISTANCES SLOPE CHAINED

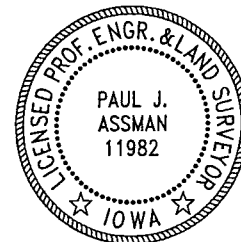
SE CORNER SECTION 32-82-40

I HEREBY CERTIFY THAT THIS LAND SURVEYING DOCUMENT WAS PREPARED AND THE RELATED SURVEY WORK WAS PERFORMED BY ME OR UNDER MY DIRECT SUPERVISION AND THAT I AM A DULY LICENSED LAND SURVEYOR UNDER THE LAWS OF THE STATE OF IOWA.

Paul J. Assman _____ 3/16/04
 PAUL J. ASSMAN DATE

IA LICENSE NO. 11982

EXP. DATE DECEMBER 31, 2004



SE PROJECT NO. 03104
 DRAWN BY: LLL