

2002 FEB 28 AM 8:01

INDEXED DM
FOLLOW UP DM
PROCEED

INST. NO. 2007-0767
DENISE MEYER, RECORDER
Denise Meyer
FEE \$6.00

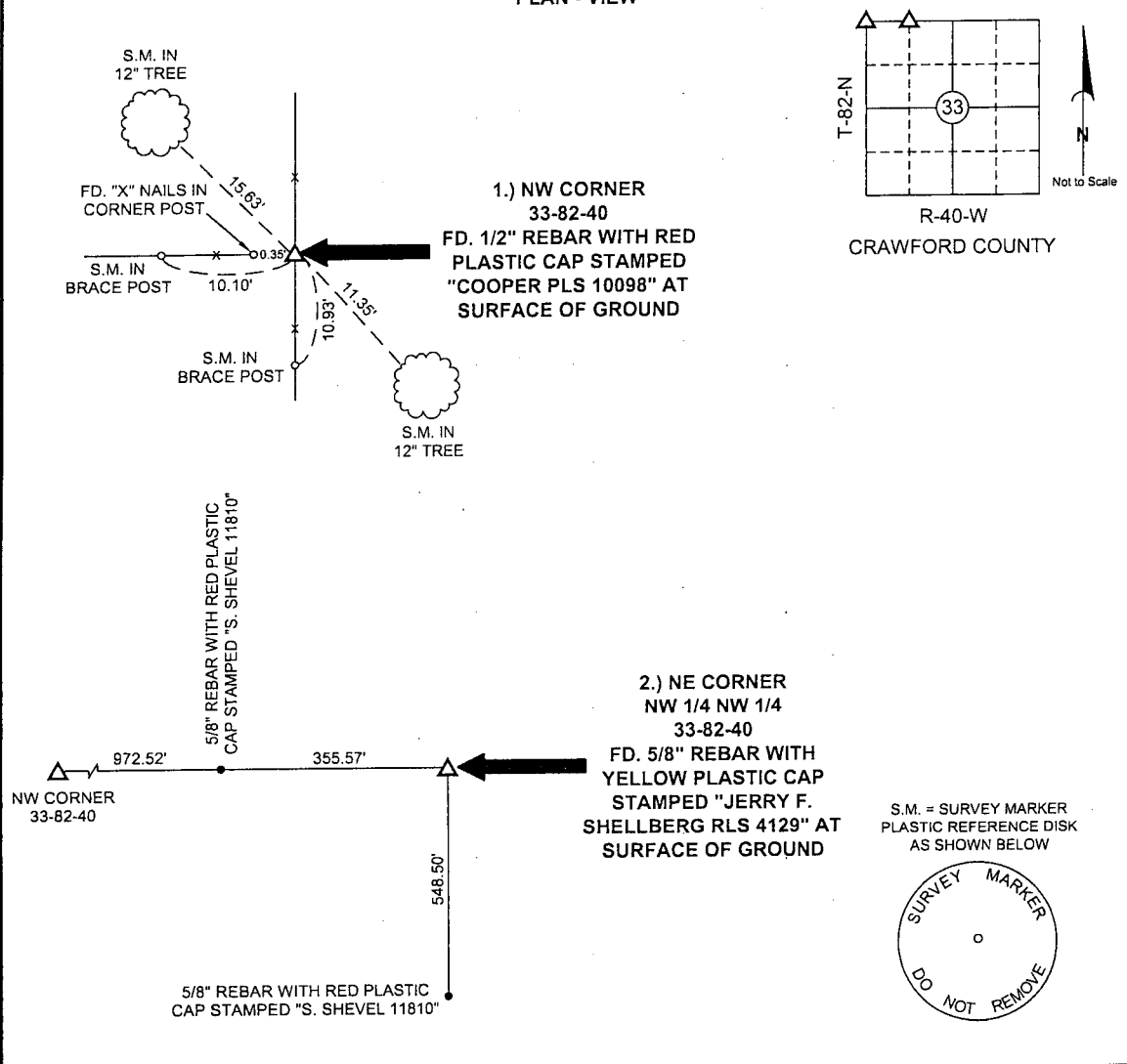
PREPARED BY: J. SCOTT SHEVEL L.S. KUEHL AND PAYER LTD., 423 WEST MAIN ST., SAC CITY, IA. 50583 PH. (712)662-7859

UNITED STATES PUBLIC LAND SURVEY CORNER CERTIFICATE
OF

LAND SURVEY MONUMENTS SITUATED IN SECTION 33, TOWNSHIP 82 NORTH,
RANGE 40 WEST, OF THE 5TH PRINCIPAL MERIDIAN, CRAWFORD COUNTY, IOWA.
PREVIOUSLY RECORDED IN BOOK _____ PAGE _____
MONUMENT DESCRIPTION AND REMARKS:

- 1.) NW CORNER 33-82-40: FOUND 1/2" REBAR WITH RED PLASTIC CAP STAMPED "COOPER PLS 10098" AT SURFACE OF GROUND
- 2.) NE CORNER NW 1/4 NW 1/4 33-82-40: FOUND 5/8" REBAR WITH YELLOW PLASTIC CAP STAMPED "JERRY F. SHELLBERG RLS 4129" AT SURFACE OF GROUND

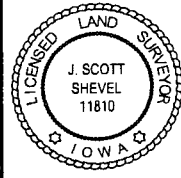
PLAN - VIEW



I hereby certify that this land surveying document was prepared and the related survey work was performed by me or under my direct personal supervision and that I am a duly licensed Land Surveyor under the laws of the State of Iowa.

J. Scott Shevel 2/10/02
Date: _____

J. Scott Shevel
License Number 11810
My license renewal date is December 31, 2003
Pages covered by this seal 1



List Corners to be Indexed

Corners	Section	Township	Range
1) NW	33	82	40
2) NE	33	82	40
NW 1/4 NW 1/4			

PN: 020509
DRAWN: JMK