

Crawford County Recorder  
 Denise Reeves  
**Fee Book 2012-0698**  
 03/28/2012 11:47AM  
 PLC PLAT CORNER CER  
 Book: Page: # Pages: 1  
 Total Fees: \$7.00

**WARDER C. HILLHOUSE, JR. M.H.F. ENGINEERING P.C. 300 W. MCKINLEY JEFFERSON, IA. (515)388-4101**  
**UNITED STATES PUBLIC LAND SURVEY CORNER CERTIFICATE OF**

Land Survey Monuments in Section 4 Township 82 Range 40  
 of the Fifth Principal Meridian, CRAWFORD County, Iowa.  
 Previously recorded in \_\_\_\_\_ in County Recorder's Office.  
(book, page, document number, etc.)

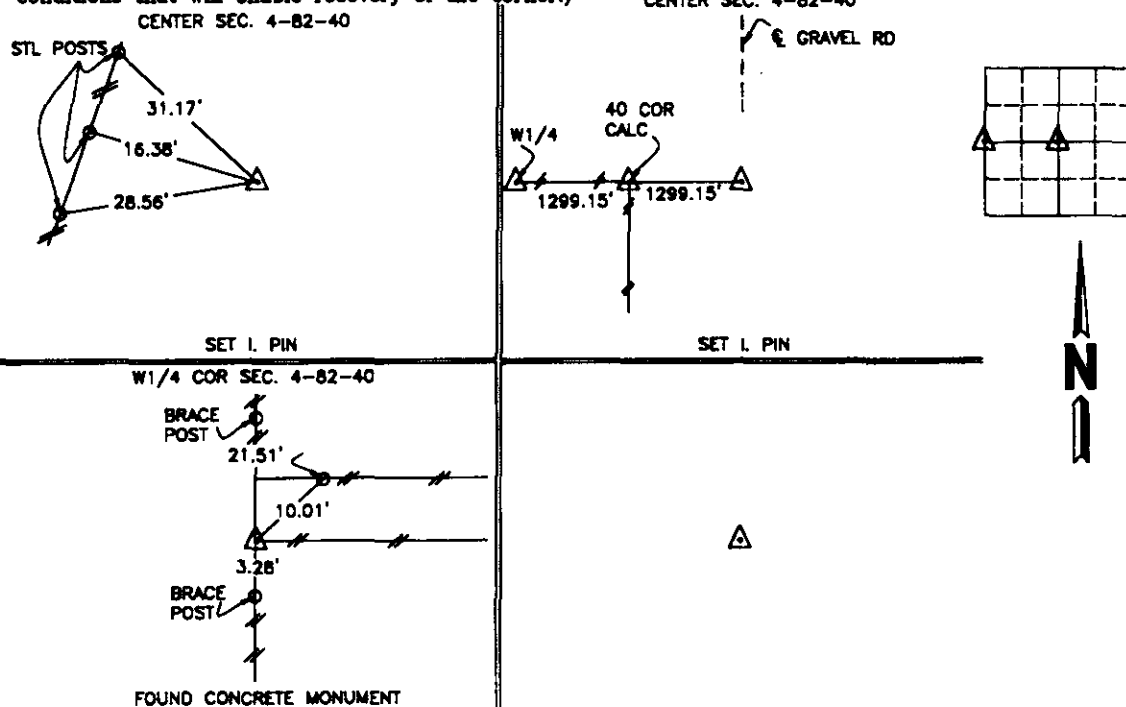
(Show reason for preparing this certificate, the evidence and detailed procedures used in establishing the corner positions and monumentation found or placed.)

**Monument Description and Remarks:**

CENTER SEC. 4-82-40: SET IRON PIN USING DOUBLED 40 CORNER CALCULATED FROM CONCRETE MONUMENT AND EXISTING FENCE LINES AND INTERSECTION OF CENTERLINE OF GRAVEL ROAD NORTH EXTENDED SOUTH.

**PLAN - VIEW**

(Show a minimum of three reference ties to durable physical objects, relevant monuments and physical conditions that will enable recovery of the corner.)



I hereby certify that this land surveying document and the related survey work was performed by me or under my direct personal supervision and that I am a duly licensed land surveyor under the laws of the state of Iowa.

Signature: Warder C. Hillhouse Jr.  
 Warder C. Hillhouse, Jr.

Date: 3/22/12 Lic. No. 8806

License Renewal Dec. 31, 2013

Date Surveyed: 1/12



Seal

List Corners to be Indexed			
Corners	Section	Twp	Range
CENTER	4	82	40
W1/4 COR	4	82	40

File No. 11185-1



M.H.F. ENGINEERING, P.C.  
 ENGINEERS - LAND SURVEYORS  
 Jefferson, Iowa 50128 Ph. (515)388-4101