

Instrument #: 2018-0394  
 02/22/2018 10:03:46 AM Total Pages: 1  
 PLC PLAT CORNER CER  
 Recording Fee: \$7.00 Transfer Tax: \$0  
 Denise Reeves, Recorder, Crawford County Iowa



PREPARED BY - JOSEPH P. RUESCHENBERG - SUNDQUIST ENGINEERING - 120 S. MAIN, DENISON, IOWA 51442 - PHONE (712) 263-8118

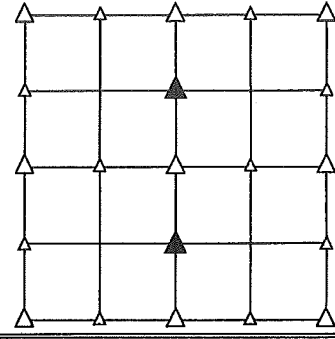
UNITED STATES PUBLIC LAND SURVEY CORNER CERTIFICATE  
 OF

LAND SURVEY MONUMENT SITUATED IN SECTION 7, T 82 N, R 40 W OF  
 THE 5TH P.M., CRAWFORD COUNTY, IOWA.  
 PREVIOUSLY RECORDED IN BOOK \_\_\_\_\_, PAGE \_\_\_\_\_, OTHER \_\_\_\_\_

MONUMENT DESCRIPTION AND REMARKS

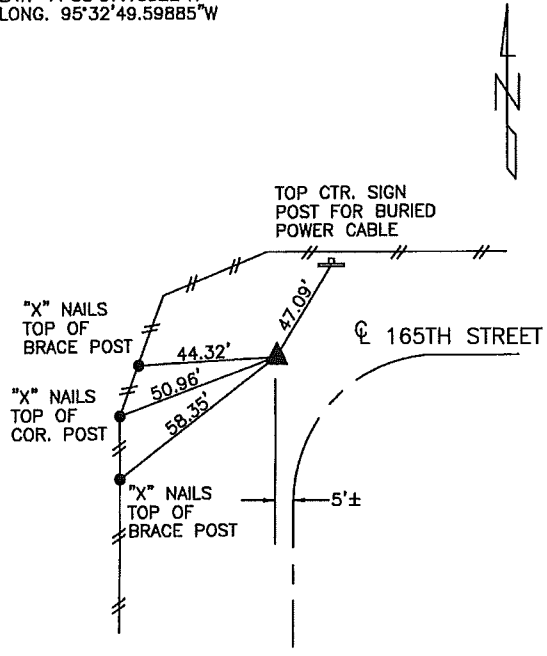
SW CORNER  
 NW1/4 NE1/4 - SET 5/8" DIA. X 18" IRON PIN W/ORANGE CAP  
 #14709 FLUSH. SET ELECTRIC FENCE POST 0.2'  
 SOUTH OF PIN. SET ON LINE BETWEEN N1/4 COR.  
 & NE COR. SE1/4 SW1/4 OF SEC. 7 USING LOCAL  
 EVIDENCE.

NE CORNER  
 SE1/4 SW1/4 - SET PK NAIL USING PREVIOUS SURVEY INFORMATION.



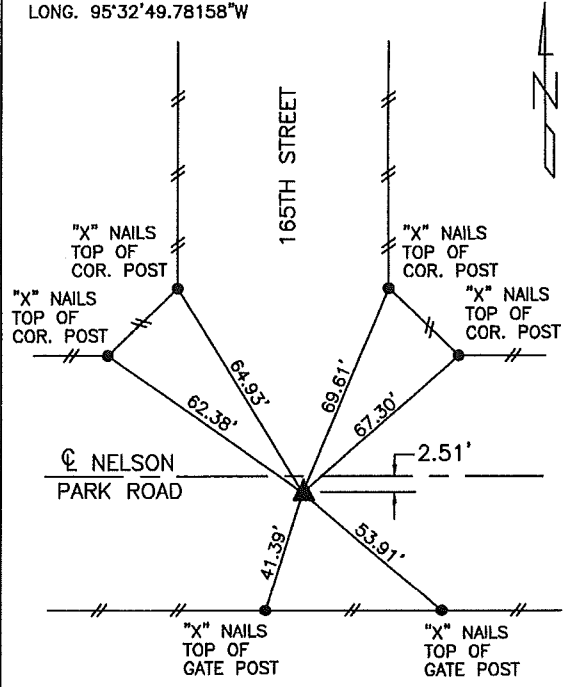
PLAN VIEW SHOWING RELATIVE LOCATION OF MONUMENT AND REFERENCE POINTS.

LAT. 41°55'57.13522"N  
 LONG. 95°32'49.59885"W



DISTANCES PLUMB CHAINED  
 SW CORNER NW1/4 NE1/4  
 SECTION 7-82-40

LAT. 41°55'30.90247"N  
 LONG. 95°32'49.78158"W

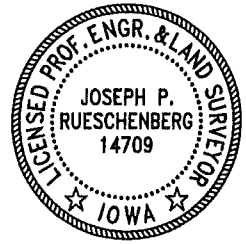


DISTANCES PLUMB CHAINED  
 NE CORNER SE1/4 SW1/4  
 SECTION 7-82-40

I HEREBY CERTIFY THAT THIS LAND SURVEYING DOCUMENT WAS PREPARED AND THE RELATED SURVEY WORK WAS PERFORMED BY ME OR UNDER MY DIRECT PERSONAL SUPERVISION AND THAT I AM A DULY LICENSED LAND SURVEYOR UNDER THE LAWS OF THE STATE OF IOWA.

*Joseph P. Rueschenberg* 2-15-2018  
 JOSEPH P. RUESCHENBERG DATE

IA LICENSE NO. 14709 EXP. DATE DECEMBER 31, 2018



SE PROJECT NO. 20418  
 DRAWN BY: LLL