

Instrument #: 2018-0393  
 02/22/2018 10:03:46 AM Total Pages: 1  
 PLC PLAT CORNER CER  
 Recording Fee: \$7.00 Transfer Tax: \$0  
 Denise Reeves, Recorder, Crawford County Iowa



PREPARED BY - JOSEPH P. RUESCHENBERG - SUNDQUIST ENGINEERING - 120 S. MAIN, DENISON, IOWA 51442 - PHONE (712) 263-8118

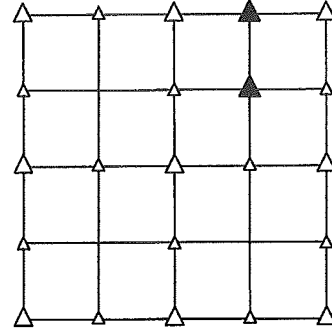
UNITED STATES PUBLIC LAND SURVEY CORNER CERTIFICATE  
 OF

LAND SURVEY MONUMENT SITUATED IN SECTION 7, T 82 N, R 40 W OF  
 THE 5TH P.M., CRAWFORD COUNTY, IOWA.  
 PREVIOUSLY RECORDED IN BOOK \_\_\_\_\_, PAGE \_\_\_\_\_, OTHER \_\_\_\_\_

MONUMENT DESCRIPTION AND REMARKS

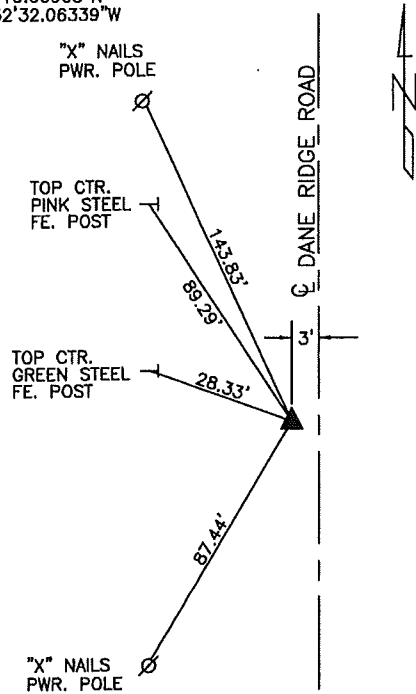
NE CORNER  
 NW1/4 NE1/4 - SET 5/8" DIA. X 18" IRON PIN W/ORANGE CAP  
 #14709 0.4' DEEP. SET ON LINE & AT SPLIT  
 BETWEEN N1/4 COR. & NE COR. OF SEC. 7.

SE CORNER  
 NW1/4 NE1/4 - SET 5/8" DIA. X 18" IRON PIN W/ORANGE CAP  
 #14709 FLUSH. SET AT INTERSECTION OF LINES  
 BETWEEN SW COR. NW1/4 NE1/4 & SE COR. NE1/4  
 NE1/4 AND BETWEEN NE COR. NW1/4 NE1/4 & SE  
 COR SW1/4 NE1/4 OF SEC. 7.



PLAN VIEW SHOWING RELATIVE LOCATION OF MONUMENT AND REFERENCE POINTS.

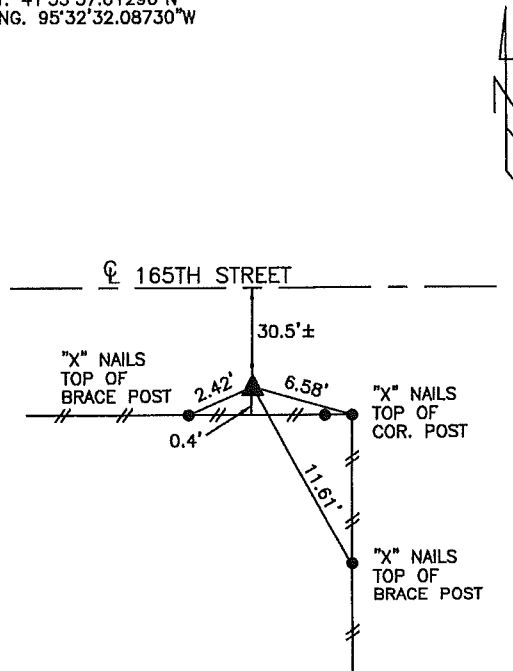
LAT. 41°56'10.00903"N  
 LONG. 95°32'32.06339"W



DISTANCES PLUMB CHAINED

NE CORNER NW1/4 NE1/4  
 SECTION 7-82-40

LAT. 41°55'57.01296"N  
 LONG. 95°32'32.08730"W



DISTANCES PLUMB CHAINED

SE CORNER NW1/4 NE1/4  
 SECTION 7-82-40

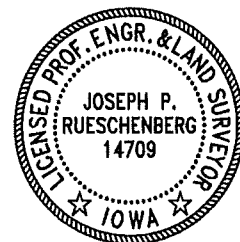
I HEREBY CERTIFY THAT THIS LAND SURVEYING DOCUMENT WAS PREPARED  
 AND THE RELATED SURVEY WORK WAS PERFORMED BY ME OR UNDER MY  
 DIRECT PERSONAL SUPERVISION AND THAT I AM A DULY LICENSED LAND  
 SURVEYOR UNDER THE LAWS OF THE STATE OF IOWA.

*Joseph P. Rueschenberg*  
 JOSEPH P. RUESCHENBERG

IA LICENSE NO. 14709

2-15-2018  
 DATE

EXP. DATE DECEMBER 31, 2018



SE PROJECT NO. 20418  
 DRAWN BY: LLL