

INDEX K70
 SCAN _____
 FOLLOW UP _____
 PROOF _____

Instrument #: 2025-0610
 03/31/2025 09:46:06 AM Total Pages: 1
 PLC PLAT COR CERT
 Recording Fee: \$7.00 Transfer Tax: \$0
 Sara Heseck, Recorder, Crawford County Iowa



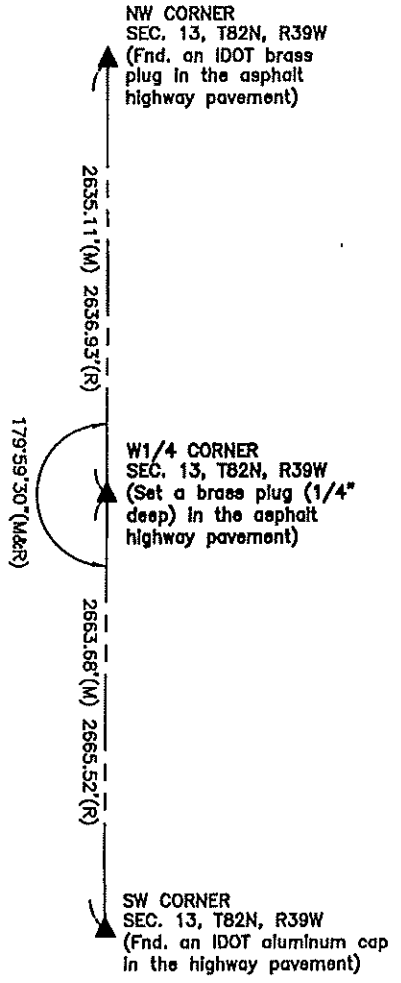
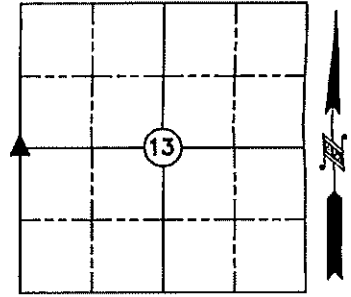
WILKE LAND SURVEYING INC. 401 1800th Street Panama, Iowa 51562 (712)579-0551

UNITED STATES PUBLIC LAND SURVEY CORNER CERTIFICATE

SECTION 13 TOWNSHIP 82N RANGE 39W COUNTY Crawford
 Reason for Certificate: Survey in the SW1/4

Monument Description and Remarks:

W1/4 CORNER - No monument was found in the nearly new asphalt highway pavement. Set a brass plug (1/4" deep) in the asphalt highway pavement using data from an IDOT Land Corner Survey by Marion L. Miller (PLS #3960) dated 5/1/1968. The set monument is ±13.9' West of the centerline asphalt seam and ±1.8' East of the West edge of the asphalt highway pavement.



(M) MEASURED ANGLE OR DISTANCE
 (R) RECORD IDOT ANGLE OR DISTANCE

ALL DISTANCES ARE HORIZONTAL



I hereby certify that this land surveying document was prepared and the related survey work was performed by me or under my direct personal supervision and that I am a duly Licensed Land Surveyor under the laws of the State of Iowa.

Dean A. Wilke 3/27/25
 Dean A. Wilke Date

License number 17048
 My license renewal date is December 31, 2025
 Pages or sheets covered by this seal: This page only

List Corners to be Indexed			
Corner	Section	Twp.	Range
W1/4 CORNER	13	82N	39W