

INDEX 20  
 SCAN \_\_\_\_\_  
 FOLLOW UP \_\_\_\_\_  
 PROOF \_\_\_\_\_

Instrument #: 2025-0790  
 04/25/2025 11:18:34 AM Total Pages: 1  
 PLC PLAT COR CERT  
 Recording Fee: \$7.00 Transfer Tax: \$0  
 Sara Meseck, Recorder, Crawford County Iowa



WILKE LAND SURVEYING INC. 401 1800th Street Panama, Iowa 51562 (712)579-0551

UNITED STATES PUBLIC LAND SURVEY CORNER CERTIFICATE

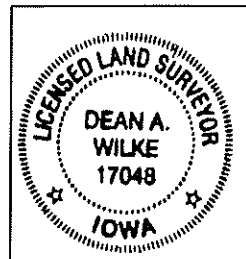
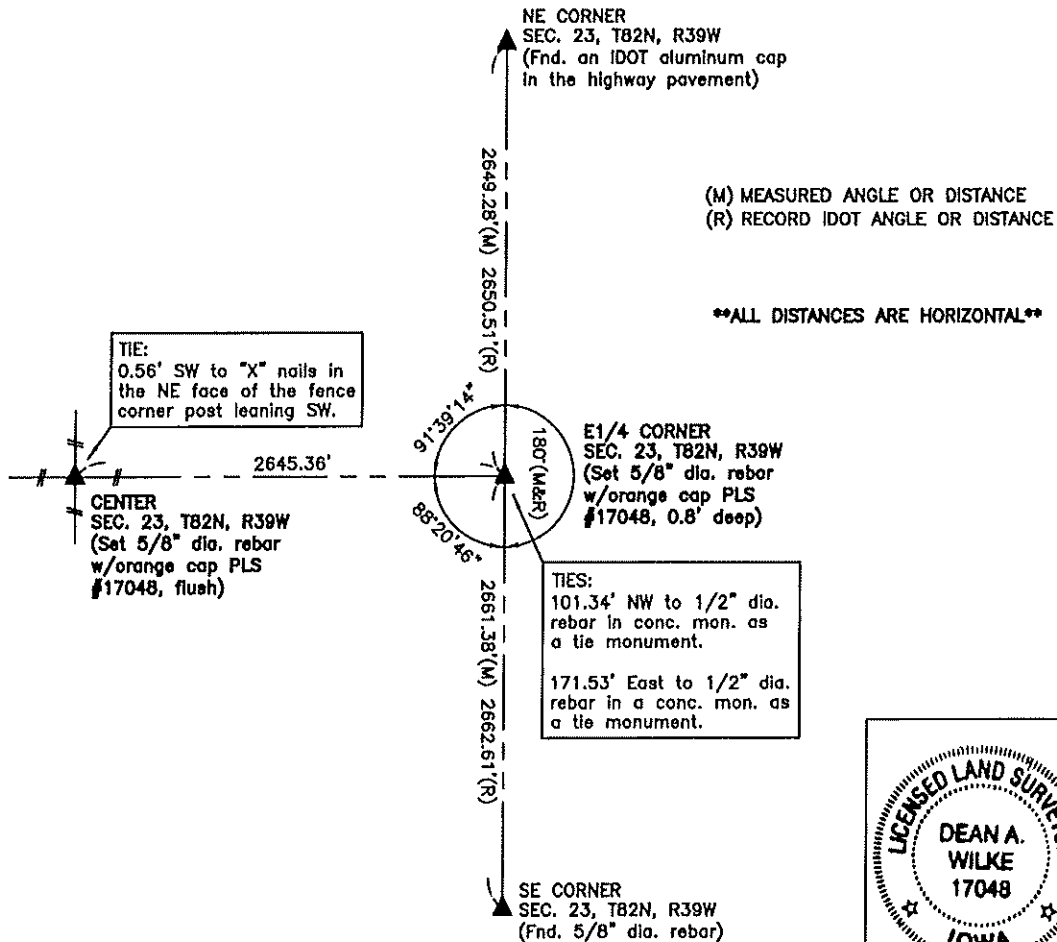
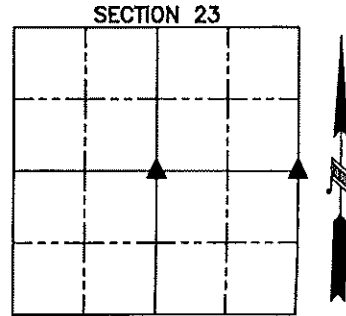
SECTION 23 TOWNSHIP 82N RANGE 39W COUNTY Crawford

Reason for Certificate: Survey in the NE1/4 SE1/4

Monument Description and Remarks:

E1/4 CORNER - No monument was found. Set a 5/8" diameter by 30" long rebar with an orange cap PLS #17048 (0.8' deep) on line and at distances proportioned to IDOT records between the NE Corner & the SE Corner of Section 23. The set monument is in the West rock shoulder of U.S. Highway No. 59 and ±24.5' West of the centerline asphalt seam.

CENTER - Set a 5/8" diameter by 24" long rebar with an orange cap PLS #17048 (flush) on the Northeast side of a corner post with fences North, East, South, & West.



I hereby certify that this land surveying document was prepared and the related survey work was performed by me or under my direct personal supervision and that I am a duly licensed Land Surveyor under the laws of the State of Iowa.

*Dean A. Wilke* 4/22/25  
 Dean A. Wilke Date

License number 17048

My license renewal date is December 31, 2025

Pages or sheets covered by this seal: This page only

| List Corners to be Indexed |         |      |       |
|----------------------------|---------|------|-------|
| Corner                     | Section | Twp. | Range |
| E1/4 CORNER                | 23      | 82N  | 39W   |
| CENTER                     | 23      | 82N  | 39W   |