

INDEXED SM
 FOLLOW UP _____
 PROOFED _____
 SCANNED _____

Instrument #: 2018-1750
 08/29/2018 10:07:46 AM Total Pages: 1
 PLC PLAT CORNER CER
 Recording Fee: \$7.00 Transfer Tax: \$0
 Denise Meeves, Recorder, Crawford County Iowa



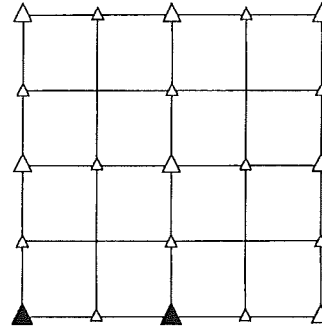
PREPARED BY - JOSEPH P. RUESCHENBERG - SUNDQUIST ENGINEERING - 120 S. MAIN, DENISON, IOWA 51442 - PHONE (712) 263-8118

UNITED STATES PUBLIC LAND SURVEY CORNER CERTIFICATE
 OF

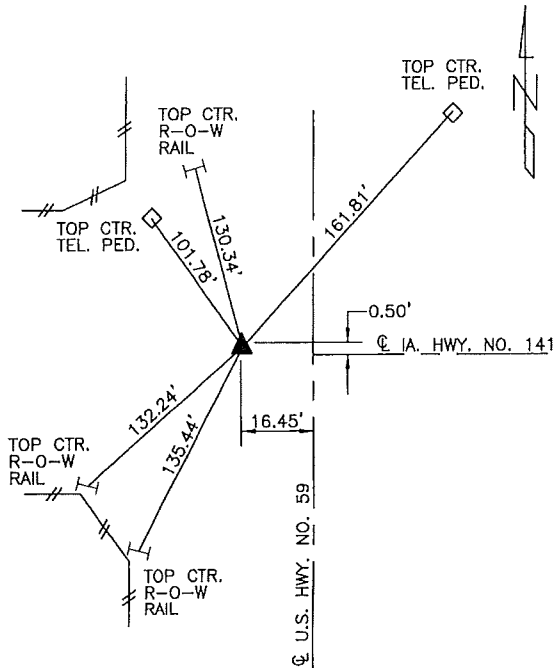
LAND SURVEY MONUMENT SITUATED IN SECTION 13, T 82 N, R 39 W OF
 THE 5TH P.M., CRAWFORD COUNTY, IOWA.
 PREVIOUSLY RECORDED IN BOOK , PAGE , OTHER

MONUMENT DESCRIPTION AND REMARKS

SW CORNER - FOUND IDOT ALUM. CAP IN ASPHALT.
 S1/4 CORNER - FOUND CM WITH 3/8" DIA. IRON PIN IN CENTER
 10" DEEP.

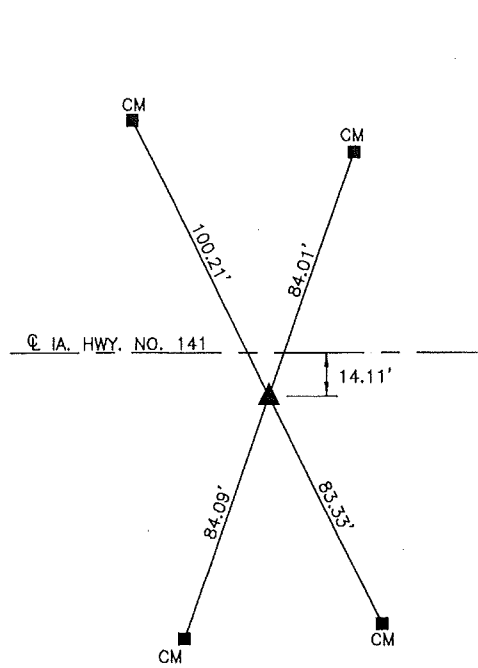


PLAN VIEW SHOWING RELATIVE LOCATION OF MONUMENT AND REFERENCE POINTS.



DISTANCES PLUMB CHAINED

SW CORNER SECTION 13-82-39



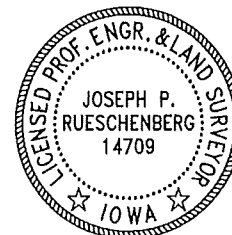
DISTANCES PLUMB CHAINED

S1/4 CORNER SECTION 13-82-39

I HEREBY CERTIFY THAT THIS LAND SURVEYING DOCUMENT WAS PREPARED
 AND THE RELATED SURVEY WORK WAS PERFORMED BY ME OR UNDER MY
 DIRECT PERSONAL SUPERVISION AND THAT I AM A DULY LICENSED LAND
 SURVEYOR UNDER THE LAWS OF THE STATE OF IOWA.

Joseph P. Rueschenberg 8-27-2018
 JOSEPH P. RUESCHENBERG DATE

IA LICENSE NO. 14709 EXP. DATE DECEMBER 31, 2018



SE PROJECT NO. 23218
 DRAWN BY: LLL