

RED BY - TERENCE E. CRAWFORD - SUNDQUIST ENGINEERING - 120 S. MAIN, DENISON, IOWA 51442 - PHONE (712) 263-8118

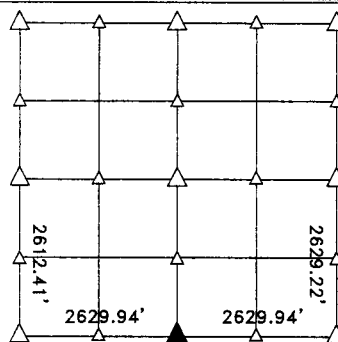
UNITED STATES PUBLIC LAND SURVEY CORNER CERTIFICATE OF

LAND SURVEY MONUMENT SITUATED IN SECTION 1, T. 84 N, R. 37 W OF
THE 5TH P.M., CRAWFORD COUNTY, IOWA.

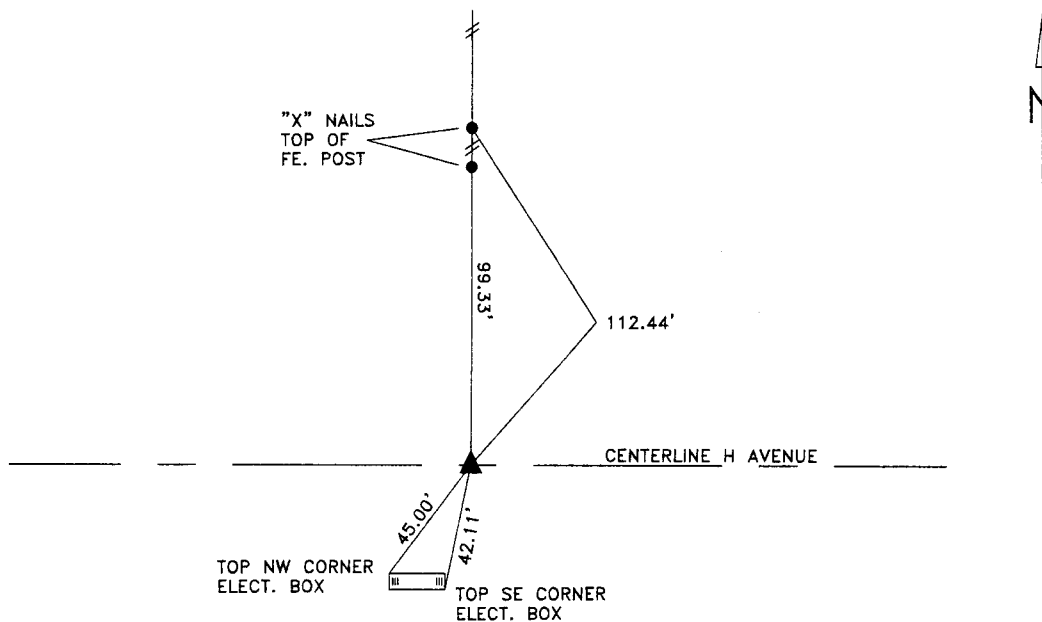
PREVIOUSLY RECORDED IN BOOK _____, PAGE _____, OTHER _____

MONUMENT DESCRIPTION AND REMARKS

S1/4 CORNER - EXCAVATED 5' X 5' X 2.5' DEEP HOLE, PROBED
ADDITIONAL 3' DEEP AT DISTANCE SPLIT BETWEEN
SW AND SE CORNERS ON STRAIGHT LINE.
LOCATION IS IN LINE WITH FENCE TO NORTH AND
CENTERLINE OF ROAD. DID NOT FIND EVIDENCE
OF CORNER. SET 5/8" X 18" IRON PIN
WITH YELLOW CAP #8893, 9" DEEP.



PLAN VIEW SHOWING RELATIVE LOCATION OF MONUMENT AND REFERENCE POINTS.



DISTANCES PLUMB CHAINED

S1/4 CORNER SECTION 1-84-37

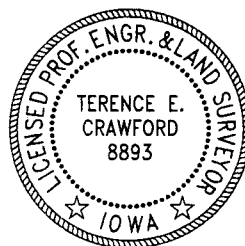
I HEREBY CERTIFY THAT THIS LAND SURVEYING DOCUMENT WAS PREPARED AND THE RELATED SURVEY WORK WAS PERFORMED BY ME OR UNDER MY DIRECT SUPERVISION AND THAT I AM A DULY LICENSED LAND SURVEYOR UNDER THE LAWS OF THE STATE OF IOWA.

Terence E. Crawford
TERENCE E. CRAWFORD

NOV 26 2003

DATE _____

EXP. DATE DECEMBER 31, 2003



SE PROJECT NO. 25903
DRAWN BY: MWF