

COPY

INDEXED DM/psm
FOLLOW UP ec
PRINTED _____
SCANNED g



Crawford County Recorder Denise Meeves
Fee Book 2007-0370 REC013432
02/08/2007 1054AM # Pages 1
PLC PLAT CORNER CER
Total Fees: \$7.00

PREPARED BY & RETURN TO MIKE SCHULTE, SNYDER & ASSOCIATES, INC. 1800 WEST 22nd ST. ATLANTIC, IA 50022 (712) 249-6505

UNITED STATES PUBLIC LAND SURVEY CORNER CERTIFICATE OF

Land Survey Monuments situated in Section 13, Township 84 N, Range 37 W, of the Fifth Principal Meridian, CRAWFORD, County, Iowa. Previously recorded in N/A in County Recorder's Office.
(book, page, document number, ect.)

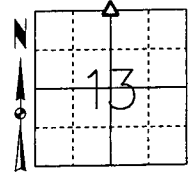
(Show reason for preparing this certificate, the evidence and detailed procedures used in establishing the corner positions and monumentation found or placed.)

Monument Description and Remarks:

N1/4 CORNER
FOUND CONCRETE MONUMENT 12" DEEP USING COUNTY ENGINEER TIES, SET 1/2"
REBAR FLUSH @ EAST SIDE FOR LOCATING PURPOSES ONLY

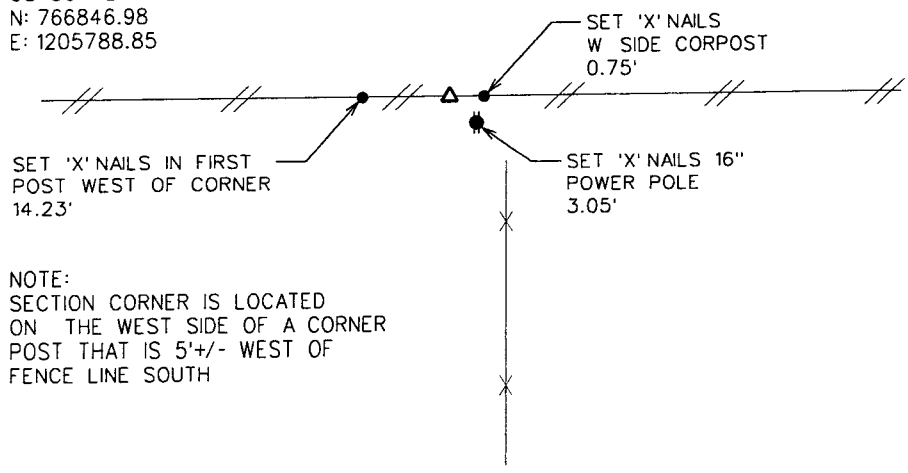
Plan-View

(Show a minimum of three reference ties to durable physical objects, relevant monuments and physical conditions that will enable recovery of the corner.)



N1/4 CORNER
FOUND CONC MONUMENT

SPC - IA SOUTH
US SURVEY FT (NAD83-1996)
N: 766846.98
E: 1205788.85



NOTE:
SECTION CORNER IS LOCATED
ON THE WEST SIDE OF A CORNER
POST THAT IS 5'+/- WEST OF
FENCE LINE SOUTH

NOTE: ALL DISTANCES MEASURED HORIZONTAL



I hereby certify that this land surveying document was prepared and the related surveying work was performed by me or under my direct supervision and that I am a duly licensed Land Surveyor under the laws of the State of Iowa.
Mike Schulte 2/05/07
Mike Schulte, PLS Date
License Number 17979
My License Renewal Date is December 31, 2007
Pages or sheets covered by this seal:
SHEET 1 OF 1

List Corners to be Indexed

Corners	Section	Twp	Range
N1/4 Corner	13	84	37
S1/4 Corner	12	84	37

TECH: KJH PN: N1/4_84-37-13 107.0032 DATE: 02-05-07