

INDEXED DM / DM
 FOLLOW UP KM
 PROOFED SM
 SCANNED KM

Instrument #: 2016-1560
 07/28/2016 11:11:06 AM Total Pages: 1
 PLC PLAT CORNER CER
 Recording Fee: \$0.00 Transfer Tax: \$0
 Denise Meeves, Recorder, Crawford County Iowa



PREPARED BY: PAUL ASSMAN-CRAWFORD COUNTY ENGINEER'S OFFICE-COURTHOUSE-DENISON, IA.-712-263-2449

UNITED STATES PUBLIC LAND SURVEY CORNER CERTIFICATE OF

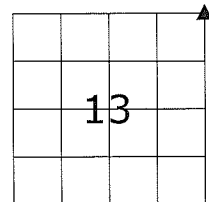
LAND SURVEY MONUMENT SITUATED IN WESTSIDE TOWNSHIP, THE NORTHEAST CORNER OF SECTION 13,
T-84N, R-37W OF THE FIFTH P.M. CRAWFORD COUNTY, IOWA.

PREVIOUSLY RECORDED AS NO. 99-3355

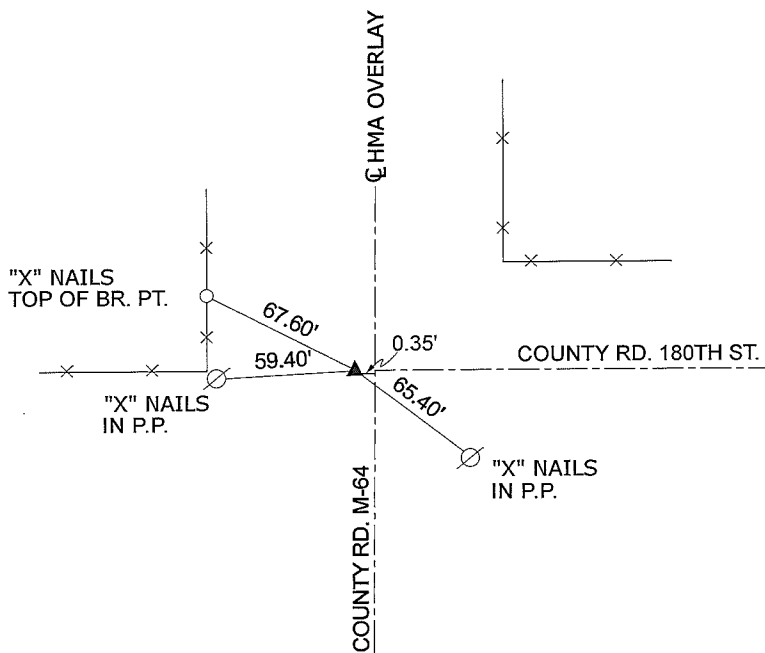
MONUMENT DESCRIPTION AND REMARKS

NORTHEAST CORNER SEC. 13-84-37

FOUND BOLT FLUSH WITH SURFACE WHICH WAS PREVIOUSLY SET USING CONSTRUCTION TIES FROM CONSTRUCTION PLAN RS-200(13)--61-24. COMPLETED HMA OVERLAY. SET CARRIAGE BOLT 0.05' DEEP OVER BOLT AND IN LINE WITH FENCE GOING WEST. RETIED CORNER.



NORTHEAST CORNER SEC. 13-84-37



ALL DISTANCES ARE PLUMB CHAINED

CERTIFICATION:

I HEREBY CERTIFY THAT THIS LAND SURVEYING DOCUMENT WAS PREPARED AND THE RELATED SURVEY WORK WAS PERFORMED BY ME OR UNDER MY DIRECT PERSONAL SUPERVISION AND THAT I AM A DULY LICENSED LAND SURVEYOR UNDER THE LAWS OF THE STATE OF IOWA.

Signature: *Paul J. Assman* Date of Survey: 7/27/16
 PAUL J. ASSMAN 11982 12-31-16
 Typed Name L.S. No. License Renewal Date

Pages covered by this seal 1

