

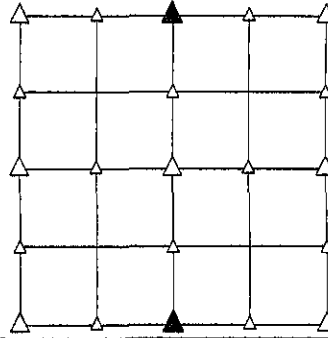
PREPARED BY - TERENCE E. CRAWFORD - SUNDQUIST ENGINEERING - 120 S. MAIN, DENISON, IOWA 51442 - PHONE (712) 263-8118

**UNITED STATES PUBLIC LAND SURVEY CORNER CERTIFICATE  
 OF**

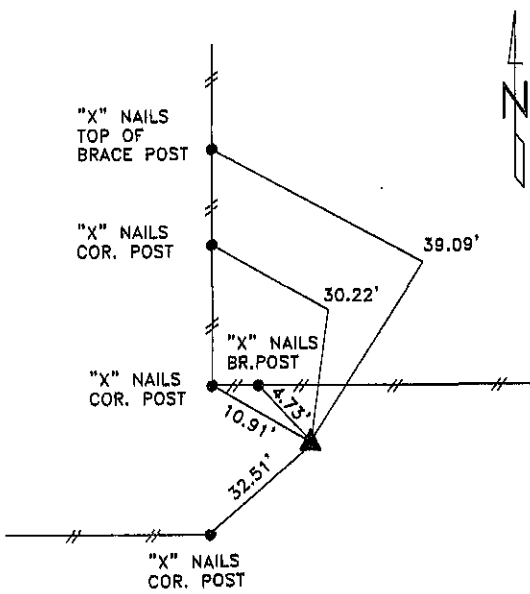
LAND SURVEY MONUMENT SITUATED IN SECTION 15, T 84 N, R 37 W OF  
 THE 5TH P.M., CRAWFORD COUNTY, IOWA.  
 PREVIOUSLY RECORDED IN BOOK \_\_\_\_\_, PAGE \_\_\_\_\_, OTHER \_\_\_\_\_

**MONUMENT DESCRIPTION AND REMARKS**

N1/4 CORNER - FOUND IDOT CAPPED PIN 0.2' DEEP.  
 S1/4 CORNER - FOUND NAIL 0.2' DEEP IN HOLE IN ASPHALT.

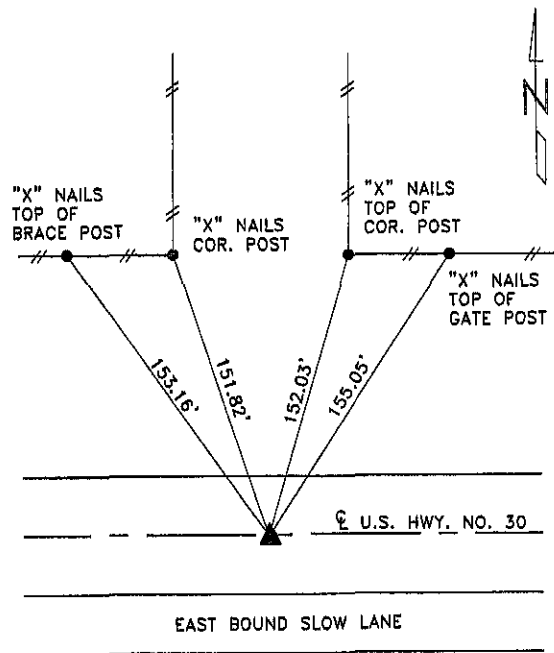


**PLAN VIEW SHOWING RELATIVE LOCATION OF MONUMENT AND REFERENCE POINTS.**



DISTANCES PLUMB CHAINED

N1/4 CORNER SECTION 15-84-37



DISTANCES PLUMB CHAINED

S1/4 CORNER SECTION 15-84-37

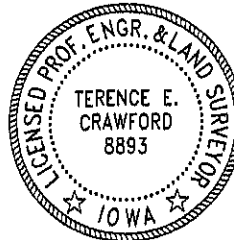
HEREBY CERTIFY THAT THIS LAND SURVEYING DOCUMENT WAS PREPARED AND THE RELATED SURVEY WORK WAS PERFORMED BY ME OR UNDER MY DIRECT PERSONAL SUPERVISION AND THAT I AM A DULY LICENSED LAND SURVEYOR UNDER THE LAWS OF THE STATE OF IOWA.

*Terence E. Crawford*

AUG 30 2007

TERENCE E. CRAWFORD  
 A LICENSE NO. 8893

DATE  
 EXP. DATE DECEMBER 31, 2007



SE PROJECT NO. 23407  
 DRAWN BY: LLL