

INDEXED KVA
 FOLLOW UP _____
 PROOFED _____
 SCANNED _____

Instrument #: 2016-0889
 05/04/2016 11:01:26 AM Total Pages: 1
 PLC PLAY CORNER CER
 Recording Fee: \$7.00 Transfer Tax: \$0
 Denise Meeves, Recorder, Crawford County Iowa



PREPARED BY & RETURN TO MIKE SCHULTE, SNYDER & ASSOCIATES, INC. 2003 390TH STREET, WESTSIDE, IOWA 51467 (515) 669-1019

UNITED STATES PUBLIC LAND SURVEY CORNER CERTIFICATE OF

Land Survey Monuments situated in Section 20, Township 84 N, Range 37 W, of the Fifth Principal Meridian, CRAWFORD, County, Iowa. Previously recorded in 95-2375 in County Recorder's Office.
 (book, page, document number, ect.)

(Show reason for preparing this certificate, the evidence and detailed procedures used in establishing the corner positions and monumentation found or placed.)

Monument Description and Remarks:

W1/4 CORNER

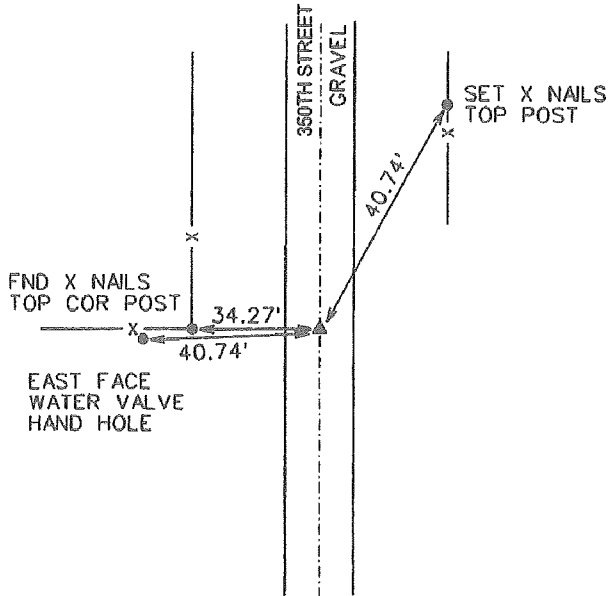
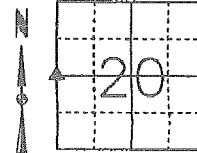
USED PREVIOUSLY RECORDED TIES AND METAL LOCATOR TO FIND 1/2" REBAR 12" DEEP. RAISED REBAR TO 4" DEEP SO IT COULD BE MORE EASILY FOUND IN THE WINTER AND RETIED CORNER SINCE MANY OF THE TIES ARE NOW MISSING.

Plan-View

(Show a minimum of three reference ties to durable physical objects, relevant monuments and physical conditions that will enable recovery of the corner.)

IA RCS ZONE 6; US SURVEY FT
 NAD83(2011)(EPOCH 2010.00)
 IOWA RTN DERIVED
 N: 7264467.61
 E: 16647995.66

WEST 1/4 CORNER
 FOUND 1/2" REBAR RAISED TO A DEPTH OF 4"



I hereby certify that this land surveying document was prepared and the related survey work was performed by me or under my direct personal supervision and that I am a duly licensed Professional Land Surveyor under the laws of the State of Iowa.
 Mike Schulte, PLS Date: 2016-05-02
 License Number: 17979
 My License Renewal Date is December 31, 2017
 Pages or sheets covered by this seal:
 SHEET 1 OF 1

| List Corners to be Indexed | | | |
|----------------------------|---------|-----|-------|
| Corners | Section | Twp | Range |
| W1/4 CORNER | 20 | 84 | 37 |
| E1/4 CORNER | 19 | 84 | 37 |