

1999 JUN 18 PM 12:40

INST. NO. **99-1755**

DENISE MEEVES, RECORDER

*Denise Meeves*

FEF. # *6.00* *Manly Giten, Deputy*

This document prepared by: Semke & Associates - 712-792-2276  
Michael G. Semke, L.S.#10318 - 608 N. Court St., Carroll, Iowa

UNITED STATES PUBLIC LAND SURVEY CORNER CERTIFICATE  
OF

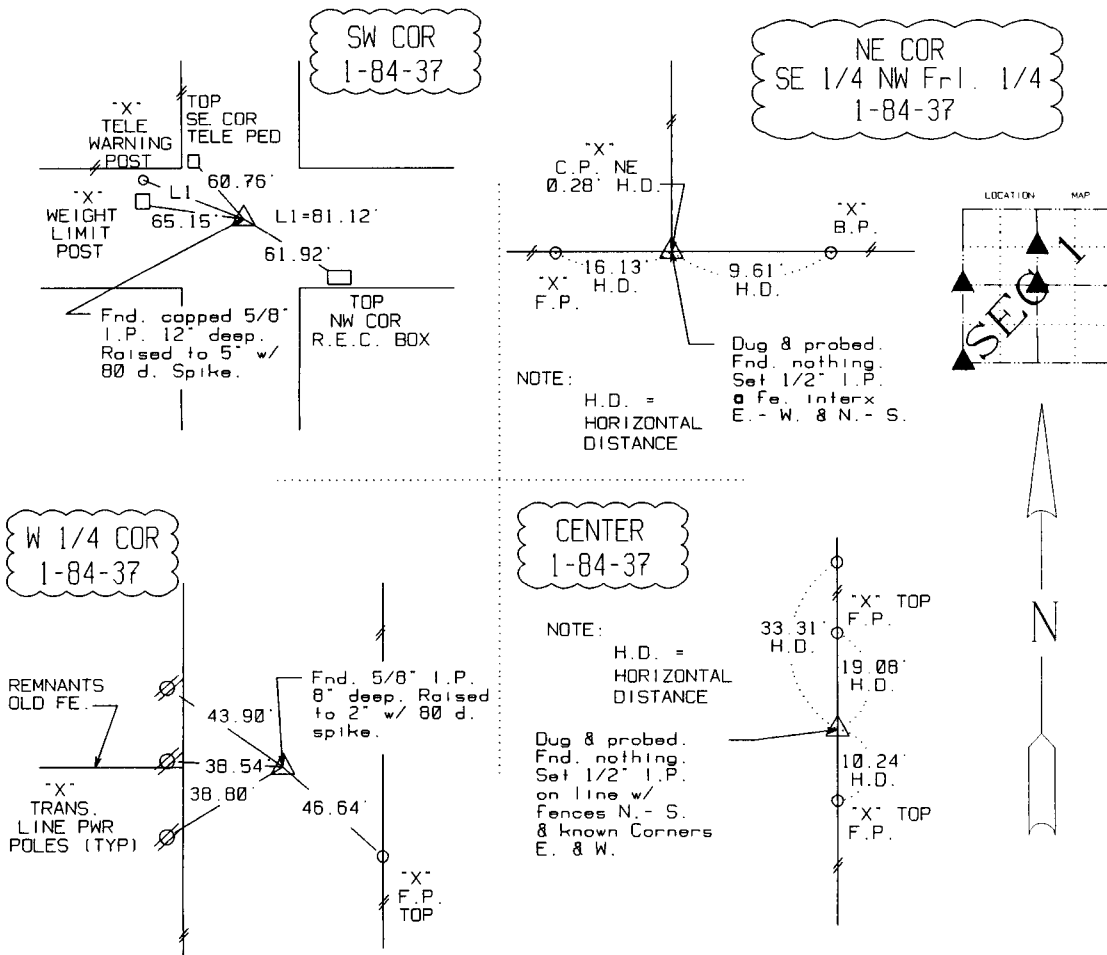
Land Survey Monuments situated in Section 1, Township 84, Range 37, of the Fifth Principal Meridian, Crawford County, Iowa. Previously recorded in \_\_\_\_\_ in County Recorder's Office.

(book, page, document number, etc.)

(Show reason for preparing this certificate, the evidence and detailed procedures used in establishing the corner positions and monumentation found or placed.)

PLAN - VIEW

(Show a minimum of three reference ties to durable physical objects, relevant monuments and physical conditions that will enable recovery of the corner.)



Note: All ties slope chained unless noted.



I HEREBY CERTIFY THAT THIS CORNER CERTIFICATE WAS PREPARED BY ME OR UNDER MY DIRECT PERSONAL SUPERVISION AND THAT I AM A PROFESSIONAL LAND SURVEYOR UNDER THE LAWS OF THE STATE OF IOWA. MY REGISTRATION IS SUBJECT TO RENEWAL 12-31-99.

DATE *6/14/99* MICHAEL G. SEMKE, RLS NO 10318

Corners	List Corners to be Indexed		
	Section	Twp	Range
W 1/4	1	84	37
E 1/4	2	84	37
SW COR	1	84	37
SE COR	2	84	37
NW COR	12	84	37
NE COR	11	84	37
NE COR SE 1/4 NW Fr. 1/4	1	84	37
CENTER	1	84	37