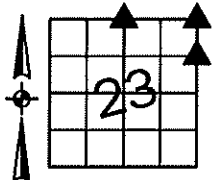


Sara Meseck, RECORDER
 Crawford County, Iowa
 Instr. Number: 2026-0061
 Recorded: 1/9/2026 at 12:53:11.0 PM
 Pages 1
 County Recording Fee: \$7.00
 Iowa E-Filing Fee: \$3.13
 Combined Fee: \$10.13
 Revenue Tax:

PREPARED BY AND RETURN TO: MIKE SCHULTE, SCHULTE SURVEYING, INC., 2003 390TH STREET, WESTSIDE, IA 51467 (712) 790-3489

UNITED STATES PUBLIC LAND SURVEY CORNER CERTIFICATE OF LAND SURVEY MONUMENTS SITUATED IN SECTION 28, TOWNSHIP 84 NORTH, RANGE 37 WEST, OF THE FIFTH PRINCIPAL MERIDIAN, CRAWFORD COUNTY, IOWA. PREVIOUSLY RECORDED IN SEE BELOW IN COUNTY RECORDER'S OFFICE.
(book, page instrument number)

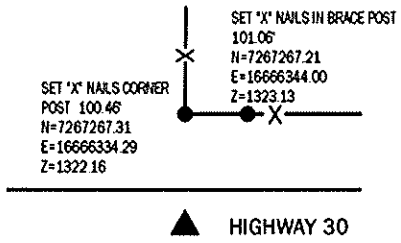


NE CORNER

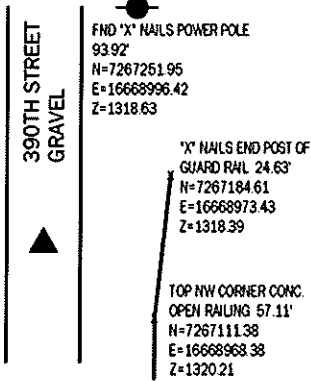
FND 5/8" REBAR YPC #14808 3" DEEP
 N=7267167.14 E=16668956.07 Z=1317.68
 USED CERTIFICATE RECORDED IN FEE BOOK 2006-1411 AND A METAL LOCATOR TO FIND A 5/8" REBAR YPC #14808 3" DEEP. VERIFIED WITH 5 REMAINING TIES.
 THIS CERTIFICATE IS BEING FILED TO UPDATE THE REFERENCE TIES.

N1/4 CORNER

FND MAG NAIL AT CENTERLINE
 N=7267166.88 E=16666331.92 Z=1332.98
 USED CERTIFICATE RECORDED IN INSTRUMENT #91-1371 AND A METAL LOCATOR TO SEARCH AREA. FOUND A MAG NAIL AT ROAD CENTERLINE. VERIFIED WITH SURROUNDING FIELD EVIDENCE.
 THIS CERTIFICATE IS BEING FILED TO UPDATE THE REFERENCE TIES.

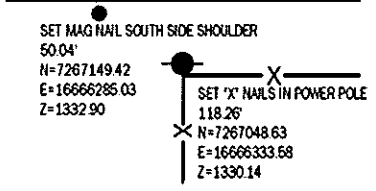


'X' NAILS IN 5TH POST FROM GUARD RAIL END
 16.41'
 N=7267166.93
 E=16668940.66
 Z=1318.13



TOP NE CORNER CONC. OPEN RAILING 43.96'
 N=7267124.98
 E=16668943.60
 Z=1320.19

TOP NW CORNER CONC. OPEN RAILING 57.11'
 N=7267111.38
 E=16668968.38
 Z=1320.21

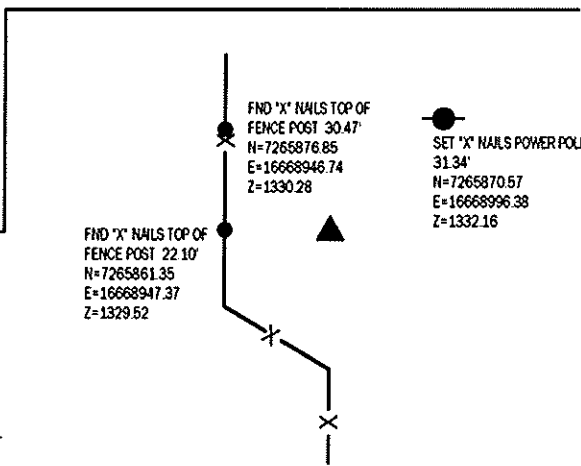


SET MAG NAIL SOUTH SIDE SHOULDER 50.04'
 N=7267149.42
 E=16666285.03
 Z=1332.90

SET 'X' NAILS IN POWER POLE 118.26'
 N=7267048.63
 E=16666333.58
 Z=1330.14

SE CORNER NE1/4 NE1/4

FND 5/8" REBAR 3" DEEP
 N=7265855.78 E=16668968.75 Z=1327.54
 USED CERTIFICATE RECORDED IN INSTRUMENT #95-2608 AND A METAL LOCATOR TO FIND A 5/8" REBAR 3" DEEP. VERIFIED WITH 2 REMAINING TIES.
 THIS CERTIFICATE IS BEING FILED TO UPDATE THE REFERENCE TIES.



FND 'X' NAILS TOP OF FENCE POST 22.10'
 N=7265861.35
 E=16668947.37
 Z=1329.52

SET 'X' NAILS POWER POLE 31.34'
 N=7265870.57
 E=16668996.38
 Z=1332.16

LIST CORNERS TO BE INDEXED

CORNER	SECTION	TWP	RANGE
N1/4 CORNER	23	84	37
S1/4 CORNER	14	84	37
NE CORNER	23	84	37
SE CORNER	14	84	37
SW CORNER	13	84	37
NW CORNER	24	84	37
SE CORNER NE1/4 NE1/4	23	84	37
SW CORNER NW1/4 NW1/4	24	84	37

*All distances are measured horizontally unless noted.

I HEREBY CERTIFY THAT THIS LAND SURVEYING DOCUMENT WAS PREPARED BY ME OR UNDER MY DIRECT PERSONAL SUPERVISION AND THAT I AM A DULY LICENSED PROFESSIONAL LAND SURVEYOR UNDER THE LAWS OF THE STATE OF IOWA.

Mike Schulte
 MIKE SCHULTE
 LICENSE NUMBER 17979
 LICENSE RENEWAL DATE IS DECEMBER 31, 2027
 PAGES COVERED BY THIS SEAL: 1 OF 1



BASIS OF BEARING

to ACS ZONE 6 - US SURVEY FEET
 to RHN DERIVED - NAD83(2011) (EPOCH 2010.00)

SCHULTE SURVEYING, INC.

DRAWN BY: SLG
 PROJ NUMBER: 25-072