

# UNITED STATES PUBLIC LAND SURVEY CORNER CERTIFICATE OF

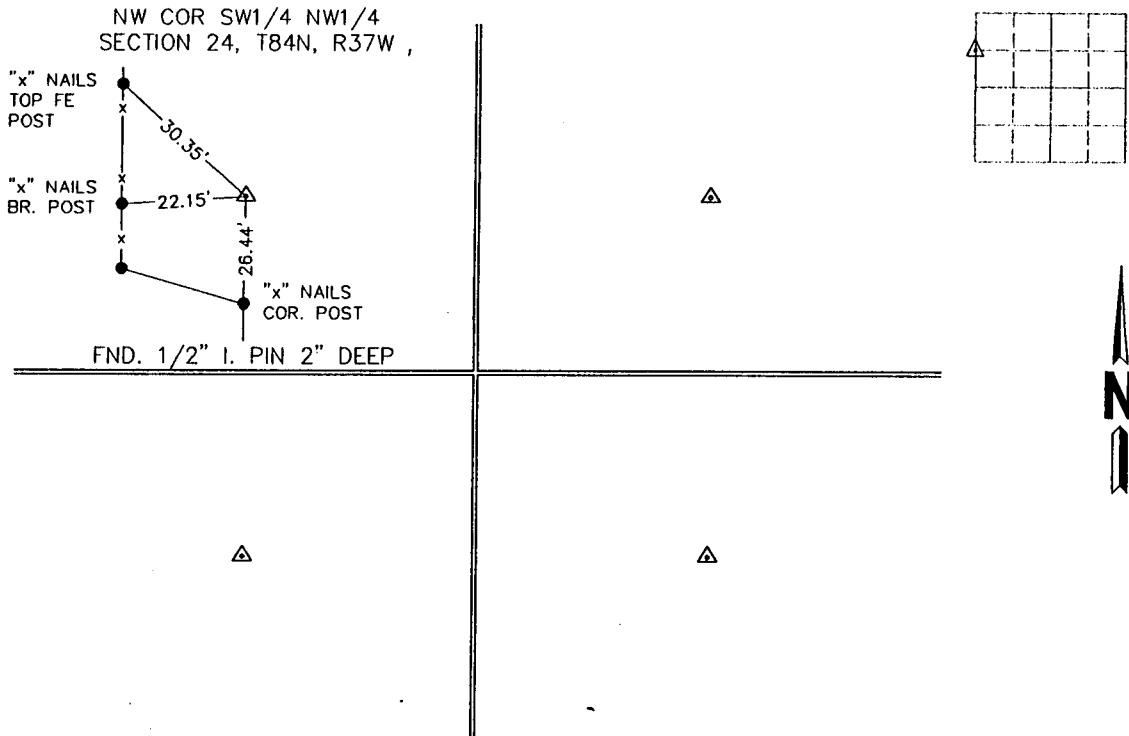
Land Survey Monuments in Section 24, Township 84, Range 37, of the Fifth Principal Meridian, CRAWFORD County, Iowa.  
Previously recorded in \_\_\_\_\_ (book, page, document number, etc.) in County Recorder's Office.

(Show reason for preparing this certificate, the evidence and detailed procedures used in establishing the corner positions and monumentation found or placed.)

Monument Description and Remarks: \_\_\_\_\_  
\_\_\_\_\_  
\_\_\_\_\_  
\_\_\_\_\_

## PLAN - VIEW

(Show a minimum of three reference ties to durable physical objects, relevant monuments and physical conditions that will enable recovery of the corner.)



I hereby certify that this survey work was completed and this certificate was prepared by me or under my direct personal supervision and that I am a duly registered land surveyor under the laws of the state of Iowa.

Signature: Warder C. Hillhouse, Jr.  
Name typed or printed: Warder C. Hillhouse, Jr.

Date: 9/22/95 Reg. No. 6806

Registration Renewal Dec. 31, 1995

SEAL



### List Corners to be Indexed

| Corners            | Section | Twp | Range |
|--------------------|---------|-----|-------|
| NW COR SW1/4 NW1/4 | 24      | 84  | 37    |

FILED DENISON, IOWA  
CRAWFORD COUNTY

95 NOV -2 AM 10: 03

INST. NO. 95-2608  
DENISE MEEVES, RECORDER

Denise Meeves  
FEE 8.00

INDEXED  
FOLLOW UP  
PROOFED  
MC

File No. 95139-2



M.H.F. ENGINEERING, P.C.  
ENGINEERS - LAND SURVEYORS  
Jefferson, Iowa 50129 Ph. (515)386-4101