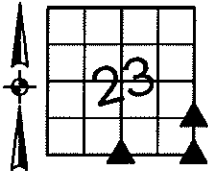


Sara Meseck, RECORDER
 Crawford County, Iowa
 Instr. Number: 2026-0062
 Recorded: 1/9/2026 at 12:53:11.0 PM
 Pages 1
 County Recording Fee: \$7.00
 Iowa E-Filing Fee: \$3.13
 Combined Fee: \$10.13
 Revenue Tax:

PREPARED BY AND RETURN TO: MIKE SCHULTE, SCHULTE SURVEYING, INC., 2003 390TH STREET, WESTSIDE, IA 51467 (712) 790-3489

UNITED STATES PUBLIC LAND SURVEY CORNER CERTIFICATE OF
 LAND SURVEY MONUMENTS SITUATED IN SECTION 23, TOWNSHIP 84 NORTH, RANGE 37 WEST, OF THE FIFTH
 PRINCIPAL MERIDIAN, CRAWFORD COUNTY, IOWA. PREVIOUSLY RECORDED IN SEE BELOW IN COUNTY
(book, page instrument number)
 RECORDER'S OFFICE.

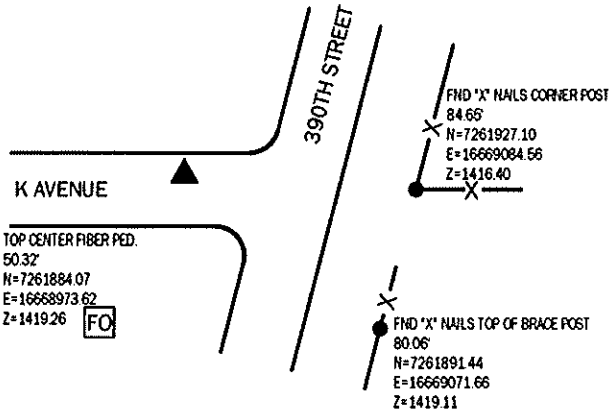
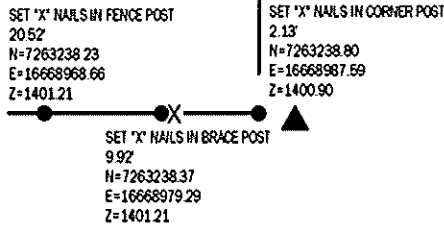


SE CORNER

FND 5/8" REBAR RPC #11982 8" DEEP
 N=7261926.98 E=16668999.91 Z=1416.95
 USED CERTIFICATE RECORDED IN FEE BOOK 2013-2026 AND A
 METAL LOCATOR TO FIND A 5/8" REBAR RPC #11982 8" DEEP.
 VERIFIED WITH 3 REMAINING TIES.
 THIS CERTIFICATE IS BEING FILED TO UPDATE THE REFERENCE TIES.

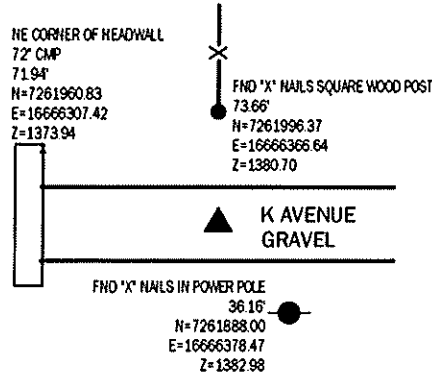
SE CORNER NE1/4 SE1/4

FND 4"x6"x16" LIMESTONE, SET MAG IN TOP
 N=7263237.37 E=16668989.16 Z=1400.67
 NO RECORD OF CORNER FOUND. CALCULATED POSITION AND
 FOUND A 4" X 6" X 16" LIMESTONE LAYING DOWN. STOOD UP,
 VERIFIED WITH SURROUNDING FIELD EVIDENCE AND SET MAG
 NAIL IN TOP.
 THIS CERTIFICATE IS BEING FILED DUE TO NONE OF RECORD.



S1/4 CORNER

FND 5/8" REBAR RPC #11982 8" DEEP
 N=7261922.73 E=16666368.44 Z=1382.96
 USED CERTIFICATE RECORDED IN FEE BOOK 2013-2025 AND A
 METAL LOCATOR TO FIND A 5/8" REBAR RPC #11982 8" DEEP.
 VERIFIED WITH 3 REMAINING TIES.
 THIS CERTIFICATE IS BEING FILED TO UPDATE THE REFERENCE TIES.



*All distances are measured horizontally unless noted.

I HEREBY CERTIFY THAT THIS LAND SURVEYING DOCUMENT WAS
 PREPARED BY ME OR UNDER MY DIRECT PERSONAL SUPERVISION AND
 THAT I AM A DULY LICENSED PROFESSIONAL LAND SURVEYOR UNDER
 THE LAWS OF THE STATE OF IOWA.

Mike Schulte
 MIKE SCHULTE
 LICENSE NUMBER: 17979
 LICENSE RENEWAL DATE IS DECEMBER 31, 2027
 PAGES COVERED BY THIS SEAL: 1 OF 1



LIST CORNERS TO BE INDEXED

CORNER	SECTION	TWP	RANGE
SE CORNER NE1/4 SE1/4	23	84	37
SW CORNER NW1/4 SW1/4	24	84	37
SE CORNER	23	84	37
SW CORNER	24	84	37
NW CORNER	25	84	37
NE CORNER	26	84	37
S1/4 CORNER	23	84	37
N1/4 CORNER	26	84	37

BASIS OF BEARING

IA RCS ZONE 6 - US SURVEY FEET
 (EARTH DERIVED - NAD83(2011) EPOCH 2010.00)

SCHULTE SURVEYING, INC.

DRAWN BY: SLG
 PROJ NUMBER: 25-072