

96 MAY 22 AM 9:33

INST. NO. 96-1483

DENISE MEEVES, RECORDER

*Denise Meeves*  
FEE P. 6.00

WARDER C. HILLHOUSE, JR. M.H.F. ENGINEERING P.C. 300 W. MCKINLEY JEFFERSON, IA. (515)386-4101

### UNITED STATES PUBLIC LAND SURVEY CORNER CERTIFICATE OF

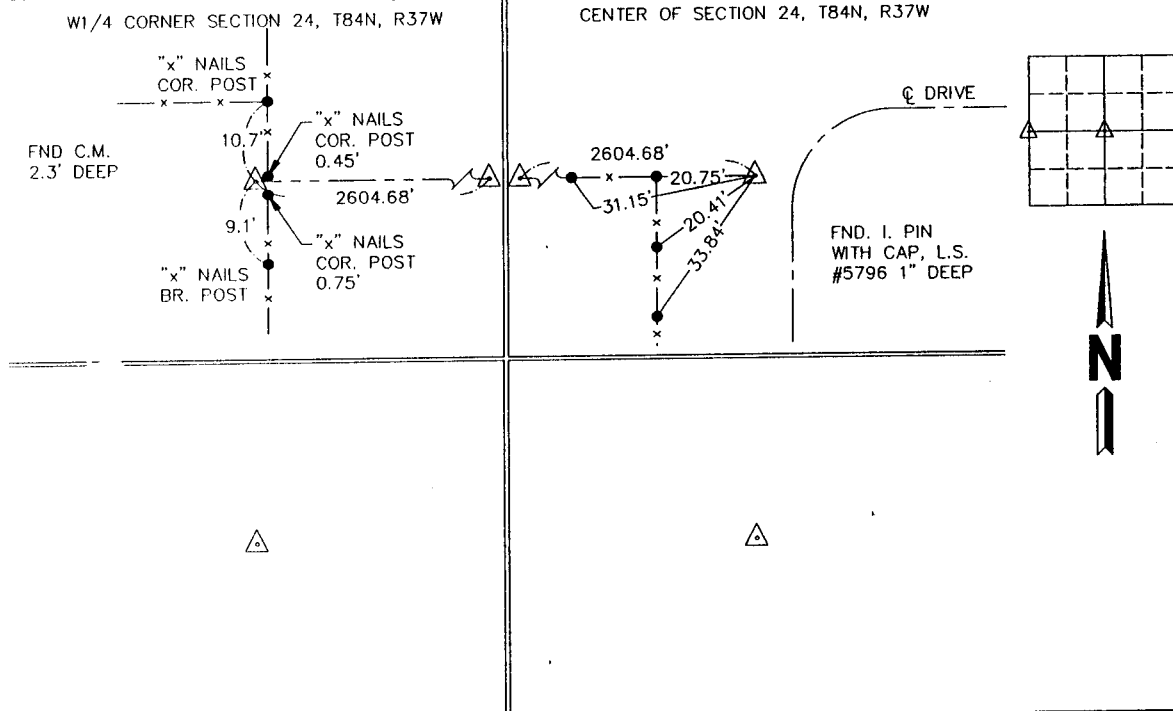
Land Survey Monuments in Section 24, Township 84, Range 37, of the Fifth Principal Meridian, CRAWFORD County, Iowa.  
Previously recorded in \_\_\_\_\_ in County Recorder's Office.  
(book, page, document number, etc.)

(Show reason for preparing this certificate, the evidence and detailed procedures used in establishing the corner positions and monumentation found or placed.)

Monument Description and Remarks: \_\_\_\_\_  
\_\_\_\_\_  
\_\_\_\_\_

### PLAN - VIEW

(Show a minimum of three reference ties to durable physical objects, relevant monuments and physical conditions that will enable recovery of the corner.)



I hereby certify that this survey work was completed and this certificate was prepared by me or under my direct personal supervision and that I am a duly registered land surveyor under the laws of the state of Iowa.

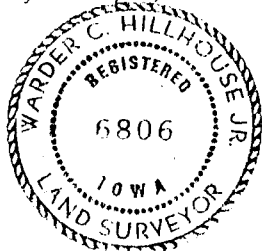
Signature: Warder C. Hillhouse, Jr.  
Name typed or printed: Warder C. Hillhouse, Jr.

Date: 05/17/96 Reg. No. 6806

Registration Renewal Dec. 31, 1997

Date Surveyed: 05/09/96

Seal



#### List Corners to be Indexed

Corners	Section	Twp	Range
CTR. SEC.	24	84	37
W1/4 COR.	24	84	37

File No. 96062-1



M.H.F. ENGINEERING, P.C.  
ENGINEERS - LAND SURVEYORS  
Jefferson, Iowa 50129 Ph. (515)386-4101