

INDEXED me
 FOLLOW UP me
 PROOFED me
 SCANNED me

This document prepared by : Semke & Associates - 712-792-2276
 Micheal G. Semke, L.S. #10318 - 716 N. Crawford St. - Carroll, Iowa

UNITED STATES PUBLIC LAND SURVEY CORNER CERTIFICATE
 OF

Land Survey Monuments situated in Section 24, Township 84 North, Range 37
 West, of the Fifth Principal Meridian, Crawford County, Iowa.
 Previously recorded in Book , Page in County Recorder's Office.

(Show reason for preparing this certificate, the evidence and detailed procedures used in establishing the corner positions and monumentation found or placed.)

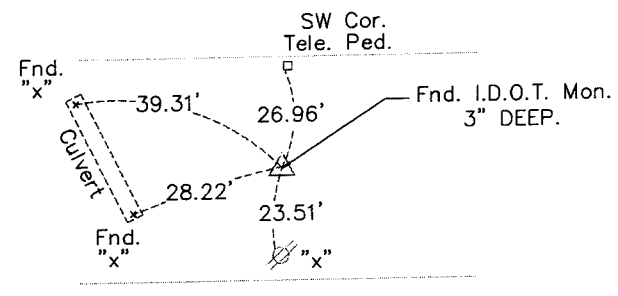
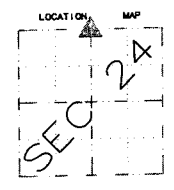
N 1/4 Corner Found I.D.O.T. Mon. 3" Deep
 2 1/2" Diameter

Note: All pins set are 1/2" x 24" Rerod w/Yellow Cap #10318 unless noted otherwise.

PLAN - VIEW

(Show a minimum of three reference ties to durable physical objects, relevant monuments and physical conditions that will enable recovery of the corner.)

N 1/4 Cor
 24-84-37



Note: all ties slope chained unless noted otherwise.

PROFESSIONAL LAND SURVEYOR
 MICHEAL G. SEMKE
 10318
 IOWA

I HEREBY CERTIFY THAT THIS LAND SURVEYING DOCUMENT AND RELATED SURVEY WORK WAS PERFORMED BY ME OR UNDER MY DIRECT PERSONAL SUPERVISION AND THAT I AM A DULY LICENSED LAND SURVEYOR UNDER THE LAWS OF THE STATE OF IOWA.

M. G. Semke 7/25/14
 Signature Date

Micheal G. Semke, L.S. No. 10318
 Printed or Typed Name

Pages of sheets covered by this seal THIS PAGE My license is subject to renewal 12/31/05.

List Corners to be Indexed

Corners	Section	Twp	Range
N 1/4 Cor	24	84	37
S 1/4 Cor	13	84	37