

INDEXED gm
 FOLLOW UP _____
 PROOFED _____
 SCANNED _____

Instrument #: 2016-0634
 03/31/2016 01:54:17 PM Total Pages: 1
 PLC PLAT CORNER CER
 Recording Fee: \$7.00 Transfer Tax: \$0
 Denise Meeves, Recorder, Crawford County Iowa



PREPARED BY & RETURN TO MIKE SCHULTE, SNYDER & ASSOCIATES, INC. 2003 390TH STREET, WESTSIDE, IOWA 51467 (515) 669-1019

UNITED STATES PUBLIC LAND SURVEY CORNER CERTIFICATE OF

Land Survey Monuments situated in Section 24, Township 84 N, Range 37 W, of the Fifth Principal Meridian, CRAWFORD County, Iowa.
 Previously recorded in INST 99-3356 in County Recorder's Office.
 (book, page, document number, ect.)

(Show reason for preparing this certificate, the evidence and detailed procedures used in establishing the corner positions and monumentation found or placed.)

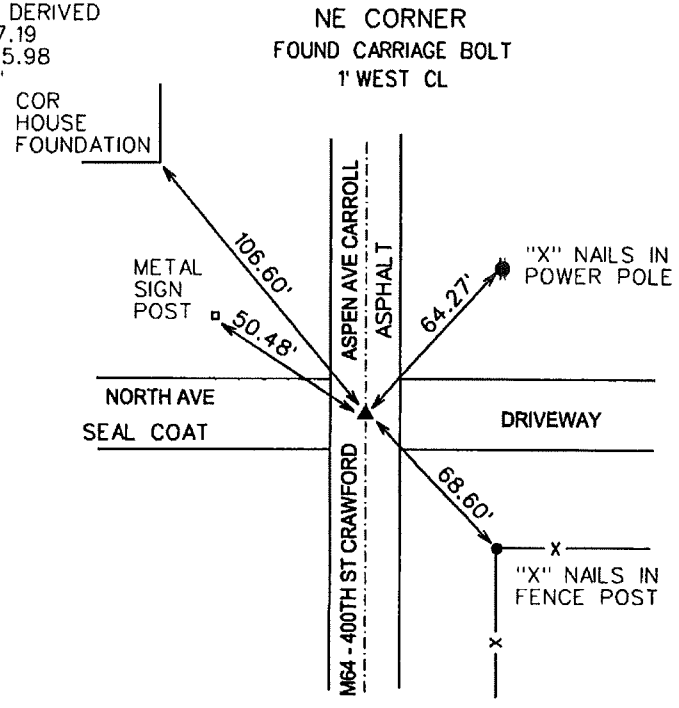
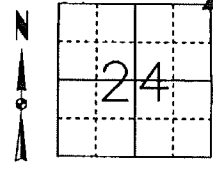
Monument Description and Remarks:

NW CORNER
USED RECORDED TIES TO FIND NEW CARRIAGE BOLT IN NEW ASPHALT OVERLAY. SINCE THE
MONUMENT HAS BEEN RESET AND TIES FOR BOTH COUNTIES ARE OLD, RETIED CORNER.

Plan-View

(Show a minimum of three reference ties to durable physical objects, relevant monuments and physical conditions that will enable recovery of the corner.)

IdRCS ZONE 6; US SURVEY FT
 NAD83(2011)(EPOCH 2010.00)
 IOWA RTN DERIVED
 N: 7267197.19
 E: 16674175.98
 EL: 1349.7'



I hereby certify that this land surveying document was prepared and the related survey work was performed by me or under my direct personal supervision and that I am a duly Licensed Professional Land Surveyor under the laws of the State of Iowa.
Mike Schulte 2016-03-31
 Mike Schulte, PLS Date
 License Number 17979
 My License Renewal Date is December 31, 2017
 Pages or sheets covered by this seal:
 SHEET 1 OF 1

List Corners to be Indexed			
Corners	Section	Twp	Range
NE COR	24	84	37
SE COR	13	84	37