

INDEXED KM  
 FOLLOW UP \_\_\_\_\_  
 PROOFED \_\_\_\_\_  
 SCANNED \_\_\_\_\_

Instrument #: 2018-1947  
 09/19/2018 08:27:33 AM Total Pages: 1  
 PLC PLAT CORNER CER  
 Recording Fee: \$0.00 Transfer Tax: \$0  
 Denise Meeves, Recorder, Crawford County Iowa



PREPARED BY: PAUL ASSMAN-CRAWFORD COUNTY ENGINEER'S OFFICE-COURTHOUSE-DENISON, IA.-712-263-2449

## UNITED STATES PUBLIC LAND SURVEY CORNER CERTIFICATE OF

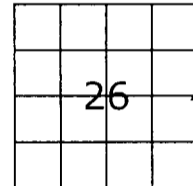
LAND SURVEY MONUMENT SITUATED IN WESTSIDE TOWNSHIP, THE EAST 1/4 CORNER OF SECTION 26, T-84N,  
R-37W OF THE FIFTH P.M. CRAWFORD COUNTY, IOWA.

PREVIOUSLY RECORDED AS NO. 2004-0421

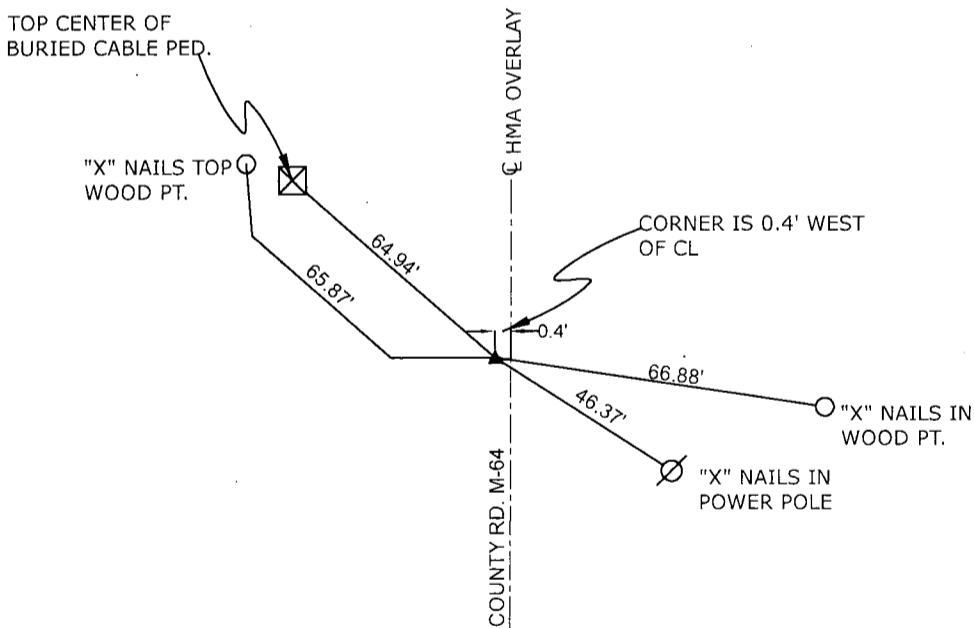
### MONUMENT DESCRIPTION AND REMARKS

EAST 1/4 CORNER SEC. 26-84-37

FOUND BOLT AT SURFACE IN ACCORDANCE WITH PREVIOUS TIES. COMPLETED HMA OVERLAY, PROJECT NO. FM-C024(117). SET 1/2" CARRIAGE BOLT AND RETIED CORNER.



EAST 1/4 CORNER SEC. 26-84-37



ALL DISTANCES ARE SLOPE CHAINED

**CERTIFICATION:**

I HEREBY CERTIFY THAT THIS LAND SURVEYING DOCUMENT WAS PREPARED AND THE RELATED SURVEY WORK WAS PERFORMED BY ME OR UNDER MY DIRECT PERSONAL SUPERVISION AND THAT I AM A DULY LICENSED LAND SURVEYOR UNDER THE LAWS OF THE STATE OF IOWA.

Signature	7/31/18 Date of Survey
PAUL J. ASSMAN <small>Typed Name</small>	11982 <small>L.S. No.</small>
12-31-18 <small>License Renewal Date</small>	

