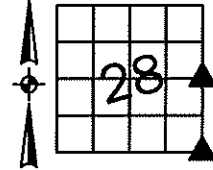


Sara Meseck, RECORDER  
 Crawford County, Iowa  
 Instr. Number: 2024-2476  
 Recorded: 12/12/2024 at 4:18:50.0 PM  
 Pages 1  
 County Recording Fee: \$7.00  
 Iowa E-Filing Fee: \$3.13  
 Combined Fee: \$10.13  
 Revenue Tax:

PREPARED BY AND RETURN TO: MIKE SCHULTE, SCHULTE SURVEYING, INC., 2003 390TH STREET, WESTSIDE, IA 51467 (712) 790-3489

**UNITED STATES PUBLIC LAND SURVEY CORNER CERTIFICATE OF**  
 LAND SURVEY MONUMENTS SITUATED IN SECTION 28, TOWNSHIP 84 NORTH, RANGE 37 WEST, OF THE FIFTH  
 PRINCIPAL MERIDIAN, CRAWFORD COUNTY, IOWA. PREVIOUSLY RECORDED IN SEE BELOW IN COUNTY  
 RECORDER'S OFFICE. (book, page instrument number)

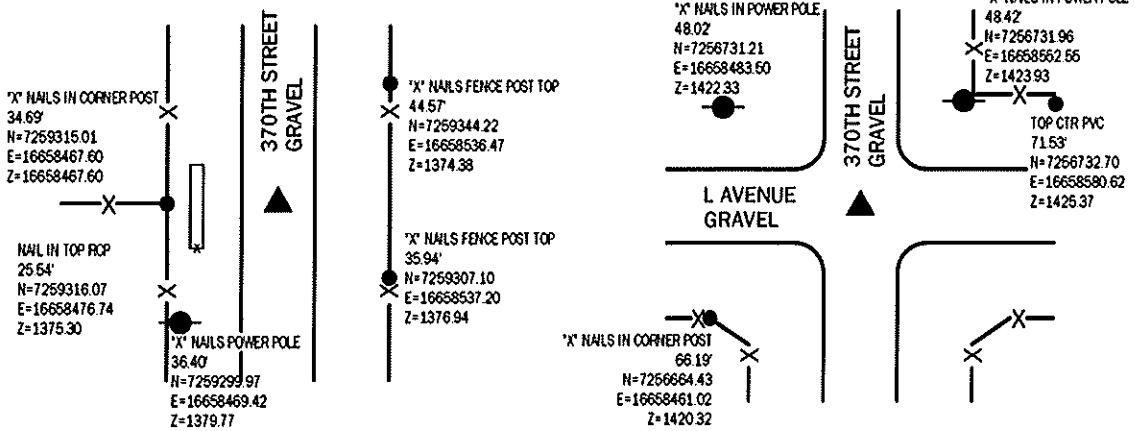


**E1/4 CORNER**  
 FND 80D SPIKE 3" DEEP

N=7259315.63 E=16658502.28 Z=1377.63  
 USED CERTIFICATE RECORDED IN INSTRUMENT #96-1046 AND A  
 METAL LOCATOR TO FIND AN 80D SPIKE 3' DEEP. VERIFIED WITH  
 3 REMAINING TIES.  
 THIS CERTIFICATE IS BEING FILED TO UPDATE THE REFERENCE TIES.

**SE CORNER**

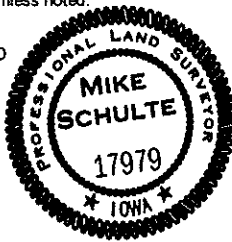
SET 5/8" REBAR YPC #17979 3" DEEP  
 N=7256697.93 E=16658518.11 Z=1425.02  
 USED COUNTY ENGINEER'S TIES, OLD ROAD PLANS AND A COUNTY  
 EXCAVATOR TO FIND A 1 1/4" IRON PIN 2.5' DEEP. IRON PIN HAD  
 LOW MAGNATISM. SET 5/8" REBAR YPC #17979 OVER. 3" DEEP.  
 THIS CERTIFICATE IS BEING FILED DUE TO NONE OF RECORD.



\*All distances are measured horizontally unless noted.

I HEREBY CERTIFY THAT THIS LAND SURVEYING DOCUMENT WAS  
 PREPARED BY ME OR UNDER MY DIRECT PERSONAL SUPERVISION AND  
 THAT I AM A DULY LICENSED PROFESSIONAL LAND SURVEYOR UNDER  
 THE LAWS OF THE STATE OF IOWA.

*Mike Schulte*  
 MIKE SCHULTE  
 LICENSE NUMBER 17979  
 LICENSE RENEWAL DATE IS DECEMBER 31, 2025  
 PAGES COVERED BY THIS SEAL: 1 OF 1



**LIST CORNERS TO BE INDEXED**

CORNER	SECTION	TWP	RANGE
E1/4 CORNER	28	84	37
W1/4 CORNER	27	84	37
SE CORNER	28	84	37
SW CORNER	27	84	37
NW CORNER	34	84	37
NE CORNER	33	84	37

**BASIS OF BEARING**

IA RCS ZONE 6 - US SURVEY FEET  
 IARTN DERIVED - NAD83(2011)(EPOCH 2010.00)

**SCHULTE SURVEYING, INC.**

DRAWN BY: SLG  
 PROJ NUMBER: 24-091