

INDEX'D ML  
 FOLLOW UP \_\_\_\_\_  
 PROC'D \_\_\_\_\_

FILED DEPT. OF IOWA  
 CRAWFORD COUNTY

96 APR -3 AM 9:45

INST. NO. 96-1046  
 DENISE MEEVES, RECORDER  
*Denise Meeves*  
 REC 600

This document prepared by: Semke & Associates - 712-792-2276  
 Micheal G. Semke, L.S. #10318 - 608 N. Court St., Carroll, Iowa

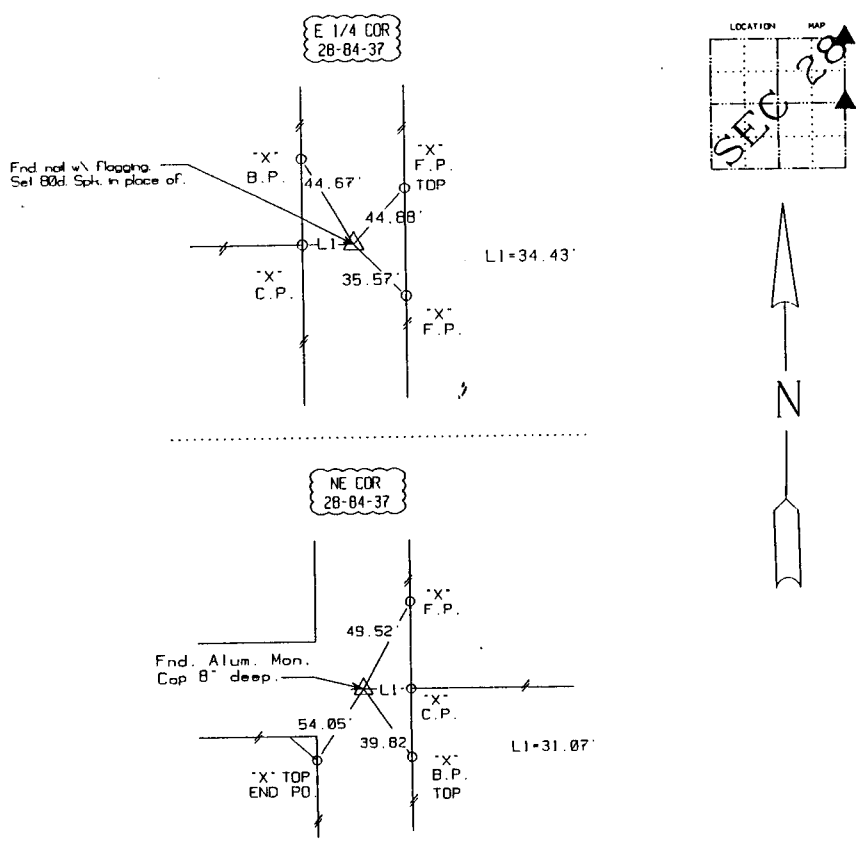
UNITED STATES PUBLIC LAND SURVEY CORNER CERTIFICATE  
 OF

Land Survey Monuments situated in Section 28, Township 84, Range  
37 of the Fifth Principal Meridian, Crawford County, Iowa.  
 Previously recorded in \_\_\_\_\_ in County Recorder's Office.  
 (book, page, document number, etc.)

(Show reason for preparing this certificate, the evidence and detailed procedures used in establishing the corner positions and  
 monumentation found or placed.)

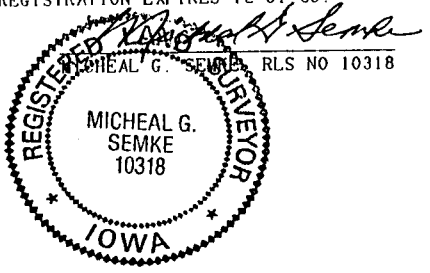
PLAN - VIEW

(Show a minimum of three reference ties to durable physical objects, relevant monuments and physical conditions that will enable  
 recovery of the corner.)



Note: All ties slope chained unless noted.

I HEREBY CERTIFY THAT THIS CORNER CERTIFICATE  
 WAS PREPARED BY ME OR UNDER MY DIRECT PERSONAL  
 SUPERVISION AND THAT I AM A DULY REGISTERED  
 LAND SURVEYOR UNDER THE LAWS OF THE STATE OF  
 IOWA. MY REGISTRATION EXPIRES 12-31-95.  
4-1-96  
 DATE



Corner	Section	Twp	Range
E 1/4	28	84	37
W 1/4	27	84	37
NE 1/4	28	84	37
NW 1/4	27	84	37
SE 1/4	21	84	37
SW 1/4	22	84	37