

INDEXED DM g
 FOLLOW UP g
 PROTECTED g
 SCANNED g

PREPARED BY & RETURN TO MIKE SCHULTE, SNYDER & ASSOCIATES, INC. 2727 SW SNYDER ROAD, ANKENY, IOWA 50023 (888) 964-2020

UNITED STATES PUBLIC LAND SURVEY CORNER CERTIFICATE OF

Land Survey Monuments situated in Section 29, Township 84 N, Range 37 W, of the Fifth Principal Meridian, CRAWFORD, County, Iowa. Previously recorded in (SEE BELOW) in County Recorder's Office.
 (book, page, document number, ect.)

(Show reason for preparing this certificate, the evidence and detailed procedures used in establishing the corner positions and monumentation found or placed.)

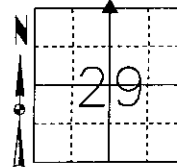
Monument Description and Remarks:

NORTH 1/4 CORNER SECTION 29-84-37

FOUND CONCRETE MONUMENT WITH AN IRON PIN 3" DEEP USING ENGINEERS TIE AND PLAT OF SURVEY TIES FOUND ARE IN POOR CONDITION, RETIED OUT SECTION CORNER

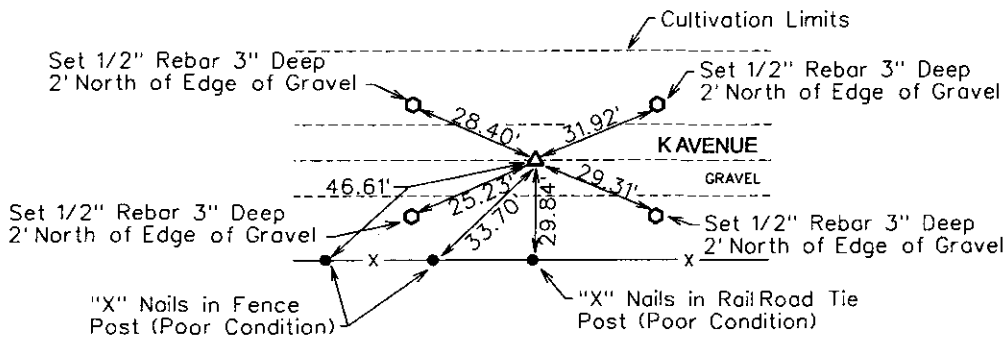
Plan-View

(Show a minimum of three reference ties to durable physical objects, relevant monuments and physical conditions that will enable recovery of the corner.)

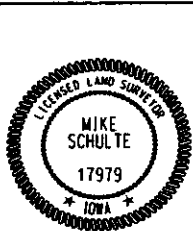


NAVD88
 Lat: 42°03'54.49498"N
 Long: 95°10'42.74891"W

NORTH 1/4 CORNER
 FOUND CONCRETE MONUMENT WITH IRON PIN 3" DEEP



NOTE: ALL DISTANCES MEASURED HORIZONTAL



I hereby certify that this land surveying document was prepared and the related surveying work was performed by me or under my direct supervision and that I am a duly licensed Land Surveyor under the laws of the State of Iowa.

Mike Schulte 5/27/08
 Mike Schulte, PLS Date

License Number: 17979
 My License Renewal Date is December 31, 2009

Pages or sheets covered by this seal:
SHEET 1 OF 1

List Corners to be Indexed

Corners	Section	Twp	Range
NORTH 1/4	29	84	37
SOUTH 1/4	20	84	37

TECH: SLG/MLS PN: 84-37-29 108.0370 DATE: 5/8/08