

INDEXED mgc/mgc
 FOLLOW UP _____
 PROCEED mgc
 SCANNED hbc

02/04/2008 @03:33PM
 PLC PLAT CORNER CER
 Book: Page: # Pages: 1
 Total Fees: \$7.00

WILKE LAND SURVEYING INC. 401 1800th Street Panama, Iowa 51562 (712)489-2898

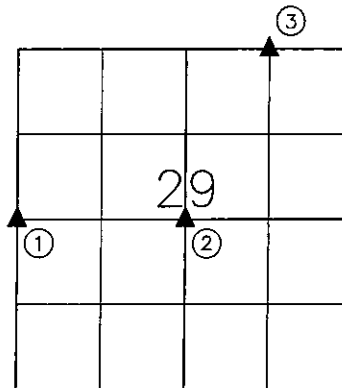
UNITED STATES PUBLIC LAND SURVEY CORNER CERTIFICATE

SECTION 29 TOWNSHIP 84N RANGE 37W COUNTY CRAWFORD

Certificate Prepared For: Survey of LOT 1 of the NE1/4 NE1/4

Monument Description and Remarks:

- ① - Found concrete monument with 1/4" dia. iron pin in the center (2.0' deep) using information from the Crawford County Engineer's Office. Did not set a pin above because it was impossible to compact the frozen ground that was chiseled from the road.
- ② - Set 5/8" dia. by 24" rebar w/orange cap PLS #17048 (flush) on the Northwest side of the old fence corner post after checking to see how a 1/4 Corner to opposite 1/4 Corner intersection point hit with the fence corner post.
- ③ - Set 5/8" dia. by 24" rebar w/orange cap PLS #17048 (0.3' deep) at the midpoint of the North line of the NE1/4.



LICENSED LAND SURVEYOR

DEAN A. WILKE

17048

IOWA

I hereby certify that this land surveying document was prepared and the related survey work was performed by me or under my direct personal supervision and that I am a duly licensed Land Surveyor under the laws of the State of Iowa.

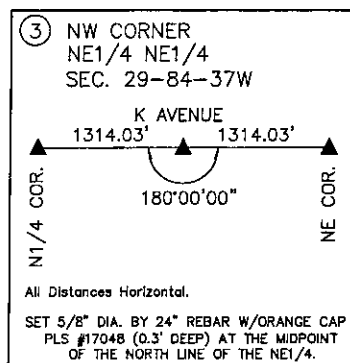
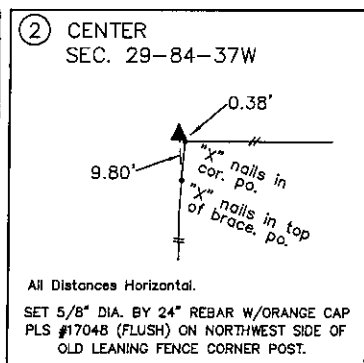
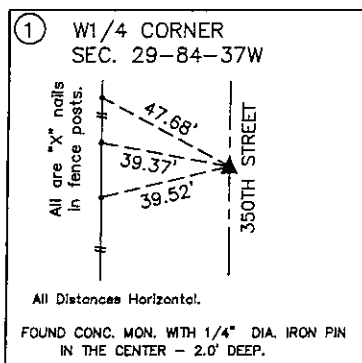
Dean A. Wilke

Dean A. Wilke Date 2/03/08

License number 17048

My license renewal date is December 31, 2008

Pages or sheets covered by this seal: This page only



List Corners to be Indexed			
Corner	Section	Twp.	Range
W1/4 CORNER	29	84N	37W
CENTER	29	84N	37W
NW CORNER	29	84N	37W
NE1/4 NE1/4			