

INDEXED Km  
 FOLLOW UP \_\_\_\_\_  
 PROOFED \_\_\_\_\_  
 SCANNED \_\_\_\_\_

Instrument #: 2016-0890  
 05/04/2016 11:01:26 AM Total Pages: 1  
 PLC PLAT CORNER CER  
 Recording Fee: \$7.00 Transfer Tax: \$0  
 Denise Meeves, Recorder, Crawford County Iowa



PREPARED BY & RETURN TO MIKE SCHULTE, SNYDER & ASSOCIATES, INC. 2003 390TH STREET, WESTSIDE, IOWA 51467 (515) 669-1019

**UNITED STATES PUBLIC LAND SURVEY CORNER CERTIFICATE OF**

Land Survey Monuments situated in Section 20, Township 84 N, Range 37 W, of the Fifth Principal Meridian, CRAWFORD, County, Iowa.  
 Previously recorded in 95-2376 in County Recorder's Office.  
 (book, page, document number, ect.)

(Show reason for preparing this certificate, the evidence and detailed procedures used in establishing the corner positions and monumentation found or placed.)

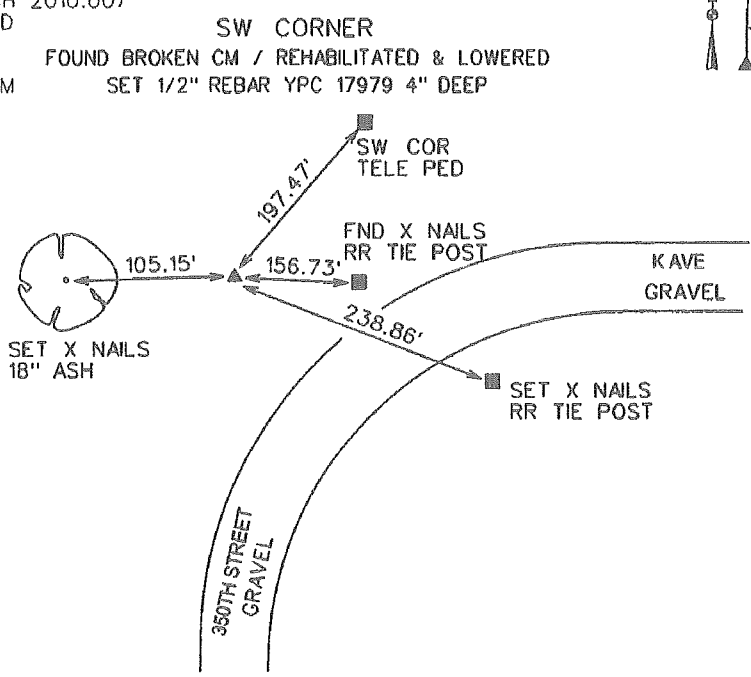
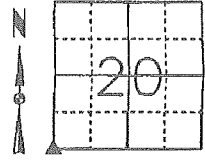
**Monument Description and Remarks:**

SW CORNER  
USED PREVIOUSLY RECORDED TIES AND METAL LOCATOR TO FIND BROKEN CM AT SURFACE. SPOKE WITH LANDOWNER DELANO PETERSEN. THEY HAD SOME CLEARING IN THE AREA DONE AND HIT IT WITH THE DOZER. EXCAVATED AROUND REMAINING LOWER PORTION OF THE CM. STRAIGHTENED IT AND SHOT IT'S LOCATION. REMOVED THE LOWER 2' OF THE CM. CUT THE TOP FLAT WITH CONCRETE SAW AND RECLAIMED THE BROZE CAP FROM THE TOP BOKEN PORTION AND RESET IT. LOWERED THE CM SO THE TOP IS 2' BELOW CURRENT GROUND LOCATION. SET 2 BRICKS OVER TOP AND SOME MISC METAL FOR LOCATING PURPOSES. SET A 1" REBAR WITH YPC 17979 4" DEEP OVER CM CENTER. AREA IS GOING INTO A 10 YEAR CRP PROGRAM SO REBAR SHOULD LAST FOR 10 YEARS.

**Plan-View**

(Show a minimum of three reference ties to durable physical objects, relevant monuments and physical conditions that will enable recovery of the corner.)

IA RCS ZONE 6: US SURVEY FT  
 NAD83(2011)(EPOCH 2010.00)  
 IOWA RTN DERIVED  
 N: 7261855.79  
 E: 16647992.56  
 EL: 1259.4' TOP CM



I hereby certify that this land surveying document was prepared and the related survey work was performed by me or under my direct personal supervision and that I am a duly Licensed Professional Land Surveyor under the laws of the State of Iowa.  
Mike Schulte 2016-05-02  
 Mike Schulte, PLS Date  
 License Number 17979  
 My License Renewal Date is December 31, 2017  
 Pages or sheets covered by this plat:  
 SHEET 1 OF 1

List Corners to be Indexed			
Corners	Section	Twp	Range
SW CORNER	20	84	37
SE CORNER	19	84	37
NE CORNER	30	84	37
NW CORNER	29	84	37