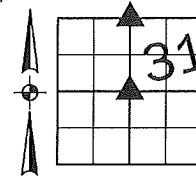


Denise Meeves RECORDER
 Crawford County, Iowa
 Instr. Number: 2018-1755
 Recorded: 8/29/2018 at 11:51:42.0 AM
 Pages 1
 Fee Amount: \$7.00
 Revenue Tax:

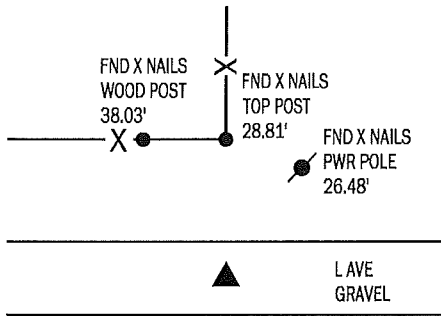
PREPARED BY AND RETURN TO: MIKE SCHULTE, SCHULTE SURVEYING, INC., 2003 390TH STREET, WESTSIDE, IA 51467 (712) 790-3489

UNITED STATES PUBLIC LAND SURVEY CORNER CERTIFICATE OF

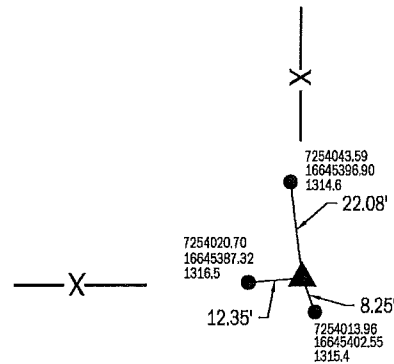
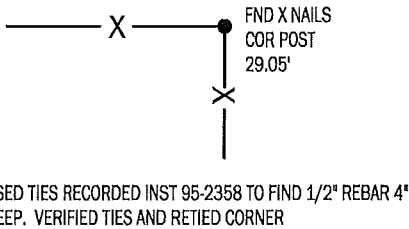
LAND SURVEY MONUMENTS SITUATED IN SECTION 31, TOWNSHIP 84 NORTH, RANGE 37 WEST, OF THE FIFTH PRINCIPAL MERIDIAN, CRAWFORD COUNTY, IOWA. PREVIOUSLY RECORDED IN SEE BELOW IN COUNTY RECORDER'S OFFICE.
(book, page instrument number)



N1/4 CORNER
 FND 1/2" REBAR
 N: 7256638.35 E: 16645435.56

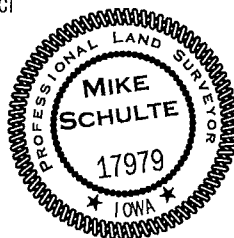


CENTER SECTION
 FND 1/2" REBAR/BURNT YPC
 N: 7254021.68 E: 16645399.63
 * NOTE ALL TIES ARE SET 5/8" REBAR



I HEREBY CERTIFY THAT THIS LAND SURVEYING DOCUMENT WAS PREPARED BY ME OR UNDER MY DIRECT PERSONAL SUPERVISION AND THAT I AM A DULY LICENSED PROFESSIONAL LAND SURVEYOR UNDER THE LAWS OF THE STATE OF IOWA.

Mike Schulte
 MIKE SCHULTE
 LICENSE NUMBER: 17979
 LICENSE RENEWAL DATE IS DECEMBER 31, 2019
 PAGES COVERED BY THIS SEAL: 1 OF 1



*All distances are measured horizontally unless noted.

LIST CORNERS TO BE INDEXED

CORNER	SECTION	TWP	RANGE
CENTER SECTION	31	84	37
N1/4 COR	31	84	37
S1/4 COR	30	84	37

BASIS OF BEARING
 IaRCS ZONE 6 - US SURVEY FEET
 IaRTN DERIVED - NAD83(2011)(EPOCH 2010.00)

SCHULTE SURVEYING, INC.

DRAWN BY: MLS
 PROJ NUMBER: 18-039