

This document prepared by : Semke & Associates - 712-792-2276  
Michael G. Semke, L.S. #10318 - 716 N. Crawford St. - Carroll, Iowa

UNITED STATES PUBLIC LAND SURVEY CORNER CERTIFICATE  
OF

Land Survey Monuments situated in Section 31, Township 84 North, Range 37  
West, of the Fifth Principal Meridian, Crawford County, Iowa.  
Previously recorded in Book , Page in County Recorder's Office.

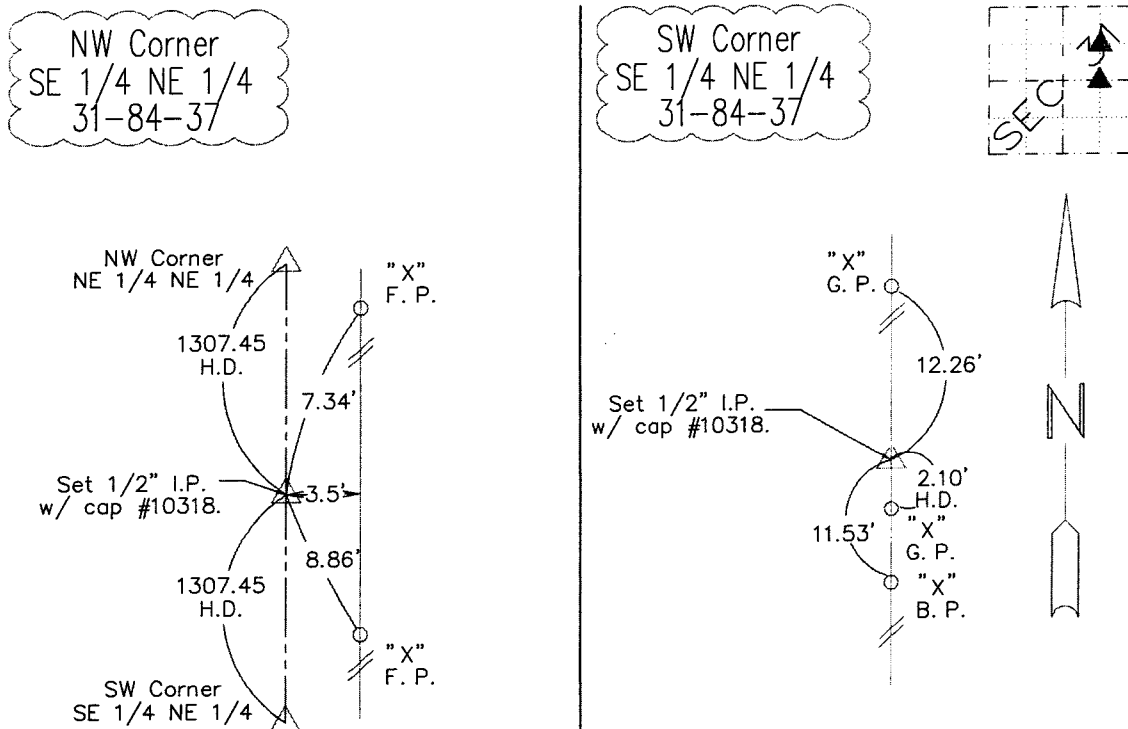
(Show reason for preparing this certificate, the evidence and detailed procedures used in establishing the corner positions and monumentation found or placed.)

NW Corner SE 1/4 NE 1/4	Set 1/2" I.P. on line & equidistant to known corners N.- S., 3 1/2' West of fe. line.
SW Corner SE 1/4 NE 1/4	Set 1/2" I.P. w/ cap on line & equidistant to known corners E.- W.

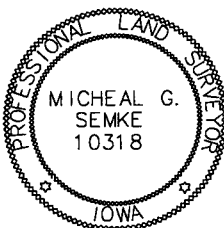
Note: All pins set are 1/2" x 24" Rerod w/Yellow Cap #10318 unless noted otherwise.

PLAN - VIEW

(Show a minimum of three reference ties to durable physical objects, relevant monuments and physical conditions that will enable recovery of the corner.)



Note: all ties slope chained unless noted otherwise.



I HEREBY CERTIFY THAT THIS CORNER CERTIFICATE  
WAS PREPARED BY ME OR UNDER MY PERSONAL  
SUPERVISION AND THAT I AM A PROFESSIONAL LAND  
SURVEYOR UNDER THE LAWS OF THE STATE OF IOWA.  
MY REGISTRATION IS SUBJECT TO RENEWAL ON 12-31-05.

*Michael G. Semke* 2/12/14  
Signature Date  
Michael G. Semke, L.S. No. 10318  
Printed of Typed Name

List Corners to be Indexed

Corners	Section	Twp	Range
NW Cor. SE 1/4 NE 1/4	31	84	37
SW Cor. SE 1/4 NE 1/4	31	84	37