

INDEXED
 FILED
 DRAWN

FILED DENISON, IOWA
 CRAWFORD COUNTY

2003 FEB 21 AM 9:15
 INST. NO. 2003-0641
 DENISE MEEVES, RECORDER
Denise Meeves
 FEE \$0.00

PREPARED BY: MICKAEL BERNDT
 CRAWFORD COUNTY ENGINEERS OFFICE - COURTHOUSE - DENISON, IA. - 712-263-2449

**UNITED STATES PUBLIC LAND SURVEY CORNER CERTIFICATE
 OF**

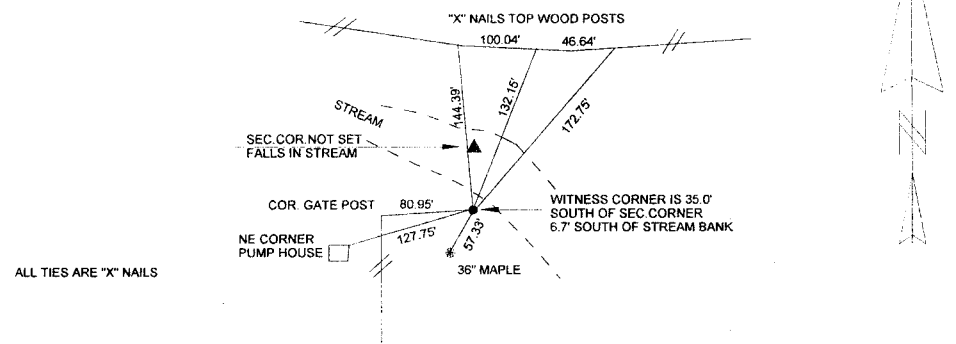
LAND SURVEY MONUMENT SITUATED IN WESTSIDE TOWNSHIP, THE NORTH 1/4
 CORNER OF SECTION 32, T-84N, R-37W OF THE 5TH P.M. CRAWFORD COUNTY, IOWA.

MONUMENT DESCRIPTION AND REMARKS

NORTH 1/4 CORNER SEC. 32-84-37

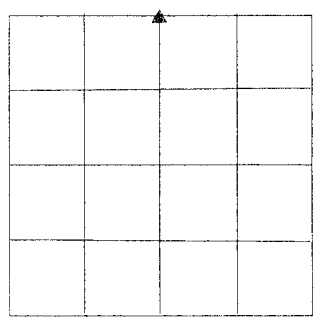
A witness corner was established in 1941 35.0' south of the true Section Corner. No Section Corner was set due to the fact that it would have been located in the stream. The Witness Corner was located for Project No. LHC47-32N. During construction the witness corner was destroyed and was replaced with a 5/8" x 18" Rebar with yellow cap #14808.

WITNESS CORNER FOR NORTH
 1/4 CORNER SEC. 32-84-37
 5/8"X18" REBAR WITH YELLOW CAP
 #14808 FLUSH WITH SURFACE
 STEEL POST WAS SET BESIDE 5/8"
 REBAR



ALL TIES ARE "X" NAILS

CORNER: NORTH 1/4
 SECTION: 32
 TOWNSHIP: 84N
 RANGE: 37W



I HEREBY CERTIFY THAT THIS LAND SURVEYING DOCUMENT WAS PREPARED
 AND THE RELATED SURVEY WORK WAS PERFORMED BY ME OR UNDER MY
 DIRECT PERSONAL SUPERVISION AND THAT I AM A DULY LICENSED LAND
 SURVEYOR UNDER THE LAWS OF THE STATE OF IOWA.

Mickael F. Berndt 2-21-03
 MICKAEL F. BERNDT DATE

IA. LICENSE NO. 14808 EXP. DATE 12-31-04

