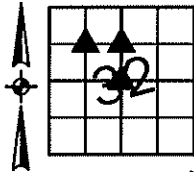


Sara Meseck, RECORDER
 Crawford County, Iowa
 Instr. Number: 2025-0325
 Recorded: 2/18/2025 at 11:21:48.0 AM
 Pages 1
 County Recording Fee: \$7.00
 Iowa E-Filing Fee: \$3.13
 Combined Fee: \$10.13
 Revenue Tax:

PREPARED BY AND RETURN TO: MIKE SCHULTE, SCHULTE SURVEYING, INC., 2003 390TH STREET, WESTSIDE, IA 51467 (712) 790-3489

UNITED STATES PUBLIC LAND SURVEY CORNER CERTIFICATE OF
 LAND SURVEY MONUMENTS SITUATED IN SECTION 32, TOWNSHIP 84 NORTH, RANGE 37 WEST, OF THE FIFTH
 PRINCIPAL MERIDIAN, CRAWFORD COUNTY, IOWA. PREVIOUSLY RECORDED IN SEE BELOW IN COUNTY
(book, page instrument number)
 RECORDER'S OFFICE.



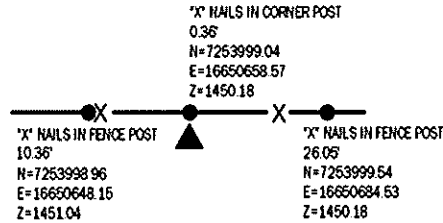
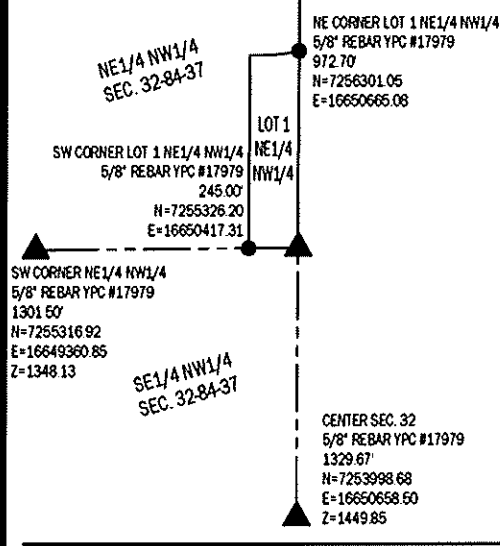
SE CORNER NE1/4 NW1/4
 SET 5/8" REBAR YPC #17979
 N=7255328.35 E=16650662.30

NO RECORD OF CORNER FOUND. SEARCHED AREA, FOUND
 NOTHING. SET 5/8" REBAR YPC #17979 AT CORNER POST.
 THIS CERTIFICATE IS BEING FILED DUE TO NONE OF RECORD.
 NO SOLID FEATURES TO TIE TO.

CENTER
 SET 5/8" REBAR YPC #17979

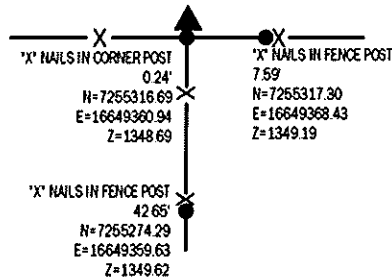
N=7253998.68 E=16650658.50 Z=1449.85

NO RECORD OF CORNER FOUND. SEARCHED AREA, FOUND
 NOTHING. SET 5/8" REBAR YPC #17979 ON SOUTH SIDE OF
 CORNER POST USED ON SURVEY RECORDED IN BOOK 8 PAGE 83.
 THIS CERTIFICATE IS BEING FILED DUE TO NONE OF RECORD.



SW CORNER NE1/4 NW1/4
 SET 5/8" REBAR YPC #17979
 N=7255316.92 E=16649360.85 Z=1348.13

NO RECORD OF CORNER FOUND. SEARCHED AREA, FOUND
 NOTHING. SET 5/8" REBAR YPC #17979 AT CORNER POST.
 THIS CERTIFICATE IS BEING FILED DUE TO NONE OF RECORD.



*All distances are measured horizontally unless noted.

I HEREBY CERTIFY THAT THIS LAND SURVEYING DOCUMENT WAS
 PREPARED BY ME OR UNDER MY DIRECT PERSONAL SUPERVISION AND
 THAT I AM A DULY LICENSED PROFESSIONAL LAND SURVEYOR UNDER
 THE LAWS OF THE STATE OF IOWA.

Mike Schulte
 MIKE SCHULTE
 LICENSE NUMBER 17979
 LICENSE RENEWAL DATE IS DECEMBER 31, 2025
 PAGES COVERED BY THIS SEAL: 1 OF 1



LIST CORNERS TO BE INDEXED

CORNER	SECTION	TWP	RANGE
SE CORNER NE1/4 NW1/4	32	84	37
CENTER	32	84	37
SW CORNER NE1/4 NW1/4	32	84	37

BASIS OF BEARING
 IaRCS ZONE 6 - US SURVEY FEET
 IaRTN DERIVED - NAD83(2011)EPOCH 2010.00

SCHULTE SURVEYING, INC.

DRAWN BY: SLG
 PROJ NUMBER: 25-007