

INDEXED             
 FOLLOW UP             
 PROOFED             
 SCANNED           

REC011641



Crawford County Recorder Denise Reeves  
 FEE BOOK 2006-2409 8/18/2006 @ 10:46AM  
 PIC PLAT CORNER CERBook: Page: #: 1  
 Total Fees: \$7.00

PREPARED BY & RETURN TO MICHAEL G. GEIER, SNYDER & ASSOCIATES, INC. 2727 SW SNYDER ROAD, ANKENY, IOWA 50023 (888) 964-2020

## UNITED STATES PUBLIC LAND SURVEY CORNER CERTIFICATE OF

Land Survey Monuments situated in Section 3, Township 84, Range 37, of the Fifth Principal Meridian, CRAWFORD County, Iowa.  
 Previously recorded in N/A in County Recorder's Office.  
 (book, page, document number, ect.)

(Show reason for preparing this certificate, the evidence and detailed procedures used in establishing the corner positions and monumentation found or placed.)

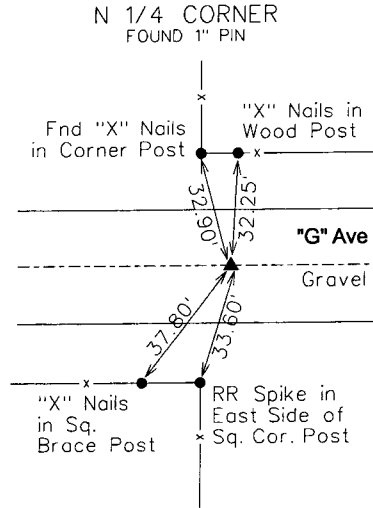
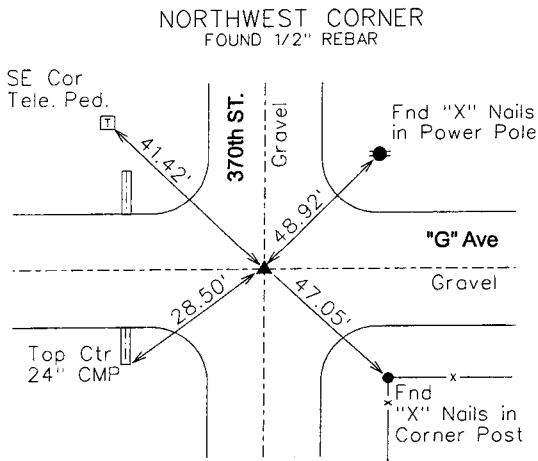
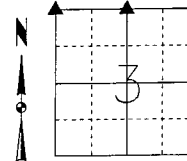
**Monument Description and Remarks:**

NORTHWEST CORNER - FOUND 1/2" REBAR IN @ 370th STREET AND @ "G" AVENUE USING EXISTING TIES AND RETIED SECTION CORNER.

NORTH 1/4 CORNER - FOUND 1" PIN IN @ "G" AVENUE USING COUNTY ENGINEER SECTION CORNER TIES AND RETIED SECTION CORNER.

**Plan-View**

(Show a minimum of three reference ties to durable physical objects, relevant monuments and physical conditions that will enable recovery of the corner.)



LICENSED LAND SURVEYOR

MICHAEL G. GEIER

11804

IOWA

I hereby certify that this land surveying document was prepared and the related surveying work was performed by me or under my direct supervision and that I am a duly licensed Land Surveyor under the laws of the State of Iowa.

*Michael G. Geier, 8-10-06*

Michael G. Geier, PLS Date

License Number 11804

My License Renewal Date is December 31, 2007

Pages or sheets covered by this seal:

SHEET 1 OF 1

List Corners to be Indexed

| Corners   | Section | Twp | Range |
|-----------|---------|-----|-------|
| NW COR    | 3       | 84  | 37    |
| NE COR    | 4       | 84  | 37    |
| SE COR    | 33      | 85  | 37    |
| SW COR    | 34      | 85  | 37    |
| N 1/4 COR | 3       | 84  | 37    |
| S 1/4 COR | 34      | 85  | 37    |

TECH: JDP      PN: 84-37-03 (105.1255)      DATE: 04/06/06