

INDEXED DM  
 FOLLOW UP DM  
 PROOFED DM  
 SCANNED DM

REC011645



Crawford County Recorder Denise Meeves  
 FEE BOOK 2006-2413 8/18/2006 @ 10:50AM  
 PLC PLAT CORNER CERBook: Page: #: 1  
 Total Fees: \$7.00

PREPARED BY & RETURN TO MICHAEL G. GEIER, SNYDER & ASSOCIATES, INC. 2727 SW SNYDER ROAD, ANKENY, IOWA 50023 (888) 964-2020

### UNITED STATES PUBLIC LAND SURVEY CORNER CERTIFICATE OF

Land Survey Monuments situated in Section 5, Township 84, Range 37, of the Fifth Principal Meridian, CRAWFORD County, Iowa. Previously recorded in N/A in County Recorder's Office.  
 (book, page, document number, ect.)

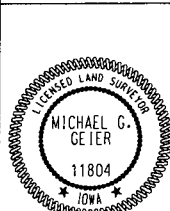
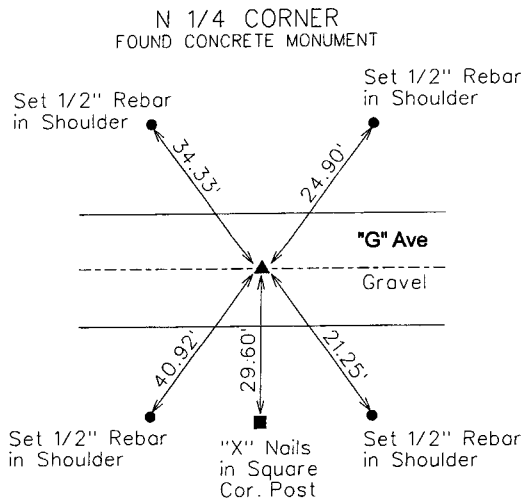
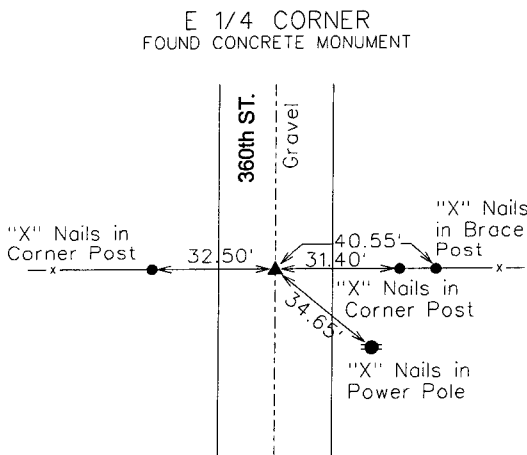
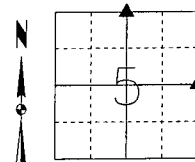
(Show reason for preparing this certificate, the evidence and detailed procedures used in establishing the corner positions and monumentation found or placed.)

Monument Description and Remarks:

EAST 1/4 CORNER - FOUND CONCRETE MONUMENT IN & 360th STREET AND RETIED SECTION CORNER.  
NORTH 1/4 CORNER - FOUND CONCRETE MONUMENT IN & "D" AVENUE 24" DEEP AND RETIED SECTION CORNER.

Plan-View

(Show a minimum of three reference ties to durable physical objects, relevant monuments and physical conditions that will enable recovery of the corner.)



I hereby certify that this land surveying document was prepared and the related surveying work was performed by me or under my direct supervision and that I am a duly licensed Land Surveyor under the laws of the State of Iowa.

Michael G. Geier 8-10-06  
 Michael G. Geier, PLS Date

License Number 11804  
 My License Renewal Date is December 31, 2007

Pages or sheets covered by this seal:  
 SHEET 1 OF 1

List Corners to be Indexed

Corners	Section	Twp	Range
E 1/4 COR	5	84	37
W 1/4 COR	4	84	37
N 1/4 COR	5	84	37
S 1/4 COR	32	85	37

TECH: JDP

PN: 84-37-05 (105.1255)

DATE: 04/05/06