

INDEXED RM/gy  
 FOLLOW UP RM/gy  
 PROOFED BM  
 SCANNED gy

REC011646



Crawford County Recorder Denise Reeves  
 FEE BOOK 2006-2414 8/18/2006 @ 10:51AM  
 PLC PLAT CORNER CERBook: Page: #: 1  
 Total Fees: \$7.00

PREPARED BY & RETURN TO MICHAEL G. GEIER, SNYDER & ASSOCIATES, INC. 2727 SW SNYDER ROAD, ANKENY, IOWA 50023 (888) 964-2020

## UNITED STATES PUBLIC LAND SURVEY CORNER CERTIFICATE OF

Land Survey Monuments situated in Section 6, Township 84, Range 37, of the Fifth Principal Meridian, CRAWFORD County, Iowa.  
 Previously recorded in N/A in County Recorder's Office.  
 (book, page, document number, ect.)

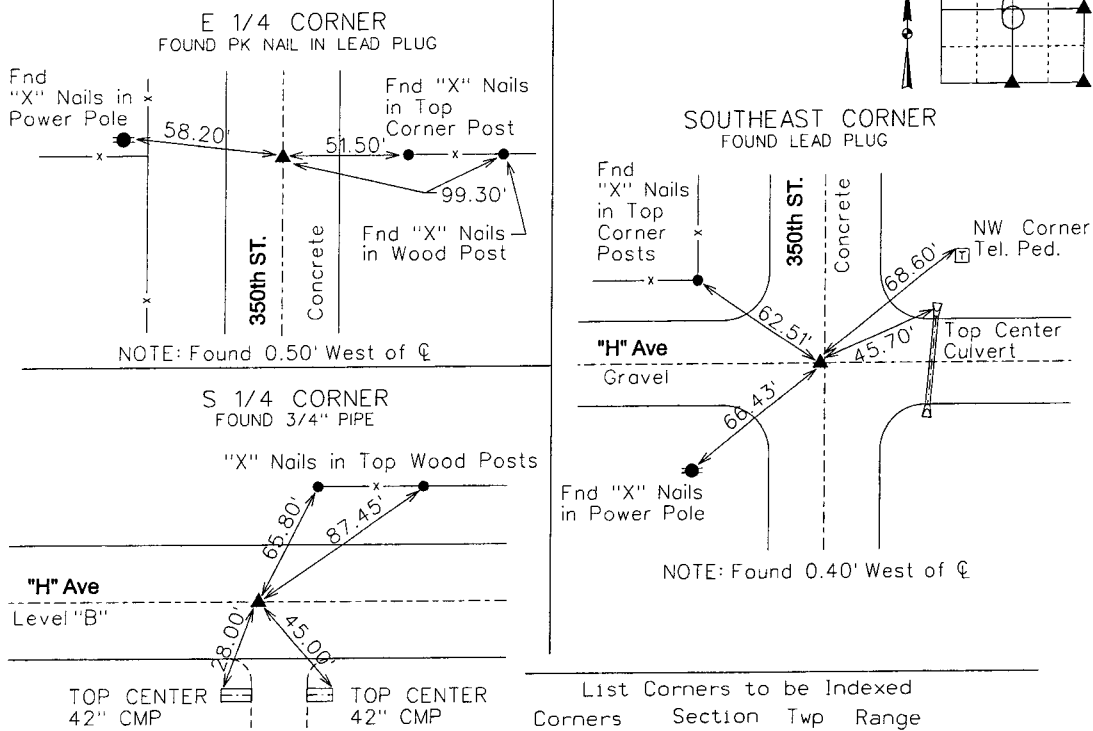
(Show reason for preparing this certificate, the evidence and detailed procedures used in establishing the corner positions and monumentation found or placed.)

**Monument Description and Remarks:**

- EAST 1/4 CORNER - FOUND PK NAIL IN LEAD PLUG 0.5' WEST OF @ JOINT 350th STREET USING EXISTING TIES AND RETIED SECTION CORNER.
- SOUTHEAST CORNER - FOUND LEAD PLUG 0.4' WEST OF @ JOINT 350th STREET USING EXISTING TIES AND RETIED SECTION CORNER.
- SOUTH 1/4 CORNER - FOUND 3/4" PIPE IN CENTERLINE "H" AVENUE AND RETIED SECTION CORNER.

**Plan-View**

(Show a minimum of three reference ties to durable physical objects, relevant monuments and physical conditions that will enable recovery of the corner.)



List Corners to be Indexed

Corners	Section	Twp	Range
E 1/4 COR	6	84	37
W 1/4 COR	5	84	37
SE COR	6	84	37
NW COR	8	84	37
NE COR	7	84	37
SW COR	5	84	37
S 1/4 COR	6	84	37
N 1/4 COR	7	84	37

I hereby certify that this land surveying document was prepared and the related surveying work was performed by me or under my direct supervision and that I am a duly licensed Land Surveyor under the laws of the State of Iowa.

*Michael G. Geier 8-0-06*  
 Michael G. Geier, PLS Date

License Number 11804  
 My License Renewal Date is December 31, 2007

Pages or sheets covered by this seal:  
 SHEET 1 OF 1

