

INDEXED DW/aj  
 FOLLOW UP WJC  
 PROOFED DM  
 SCANNED 4

REC011644



Crawford County Recorder Denise Meeves

FEE BOOK 2006-2412 8/18/2006 @ 10:49AM  
 PLC PLAT CORNER CERBook: Page: #: 1  
 Total Fees: \$7.00

PREPARED BY & RETURN TO MICHAEL G. GEIER, SNYDER & ASSOCIATES, INC. 2727 SW SNYDER ROAD, ANKENY, IOWA 50023 (888) 964-2020

## UNITED STATES PUBLIC LAND SURVEY CORNER CERTIFICATE OF

Land Survey Monuments situated in Section 5, Township 84, Range 37, of the Fifth Principal Meridian, CRAWFORD County, Iowa.  
 Previously recorded in N/A in County Recorder's Office.  
 (book, page, document number, ect.)

(Show reason for preparing this certificate, the evidence and detailed procedures used in establishing the corner positions and monumentation found or placed.)

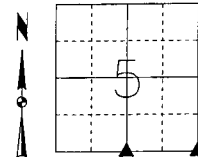
**Monument Description and Remarks:**

SOUTH 1/4 CORNER - FOUND 5/8" REBAR IN @ "H" AVENUE USING EXISTING TIES AND RETIED SECTION CORNER.

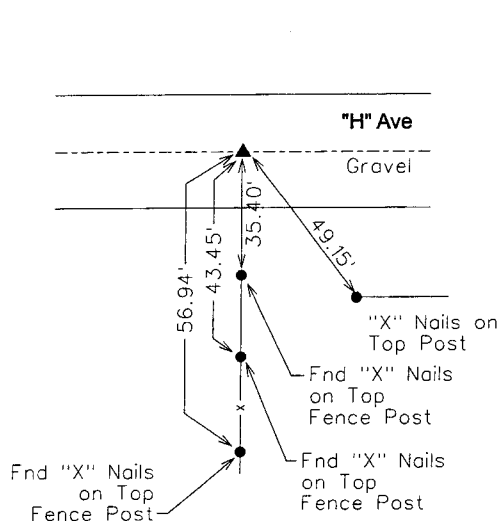
SOUTHEAST CORNER - FOUND 5/8" REBAR IN @ "H" AVE AND @ 360th ST. USING EXISTING TIES AND RETIED SECTION CORNER.

**Plan-View**

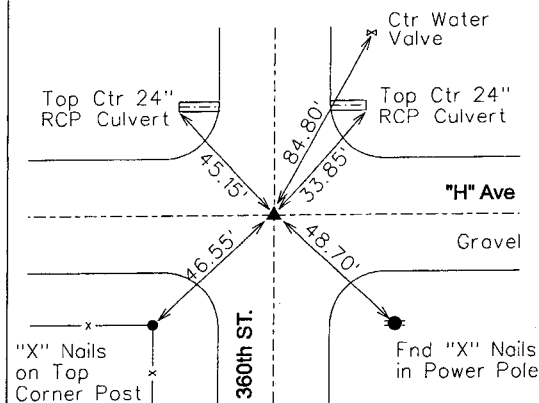
(Show a minimum of three reference ties to durable physical objects, relevant monuments and physical conditions that will enable recovery of the corner.)



**S 1/4 CORNER**  
 FOUND 5/8" REBAR



**SOUTHEAST CORNER**  
 FOUND CAPPED 5/8" REBAR



LICENSED LAND SURVEYOR  
 MICHAEL G. GEIER  
 11804  
 IOWA

I hereby certify that this land surveying document was prepared and the related surveying work was performed by me or under my direct supervision and that I am a duly licensed Land Surveyor under the laws of the State of Iowa.

*Michael G. Geier 8-10-06*  
 Michael G. Geier, PLS Date

License Number 11804  
 My License Renewal Date is December 31, 2007

Pages or sheets covered by this seal:  
 SHEET 1 OF 1

List Corners to be Indexed

Corners	Section	Twp	Range
S 1/4 COR	5	84	37
N 1/4 COR	8	84	37
SE COR	5	84	37
SW COR	4	84	37
NW COR	9	84	37
NE COR	8	84	37

TECH: JDP

PN: 84-37-05 (105.1255)

DATE: 04/05/06