

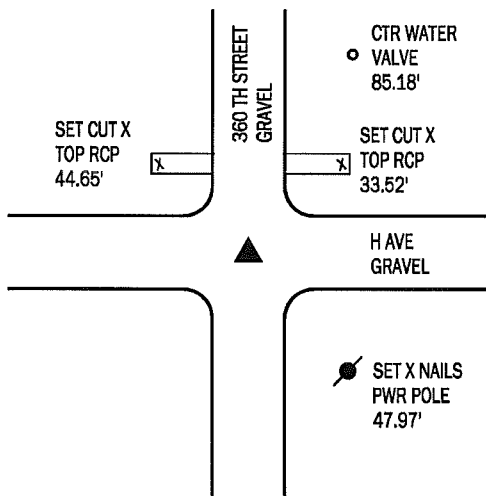
Denise Meeves RECORDER
 Crawford County, Iowa
 Instr. Number: 2017-0780
 Recorded: 4/19/2017 at 8:29:53.0 AM
 Pages 1
 Fee Amount: \$7.00
 Revenue Tax:

PREPARED BY AND RETURN TO: MIKE SCHULTE, SCHULTE SURVEYING, INC., 2003 390TH STREET, WESTSIDE, IA 51467 (712) 790-3489

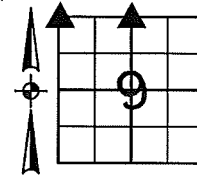
UNITED STATES PUBLIC LAND SURVEY CORNER CERTIFICATE OF
 LAND SURVEY MONUMENTS SITUATED IN SECTION 9, TOWNSHIP 84 NORTH, RANGE 37 WEST, OF THE FIFTH
 PRINCIPAL MERIDIAN, CRAWFORD COUNTY, IOWA. PREVIOUSLY RECORDED IN SEE BELOW IN COUNTY
(book, page instrument number)
 RECORDER'S OFFICE.

NW CORNER

FOUND 5/8" REBAR WITH UNREADABLE YPC
 N: 7277594.93 E: 16653215.03

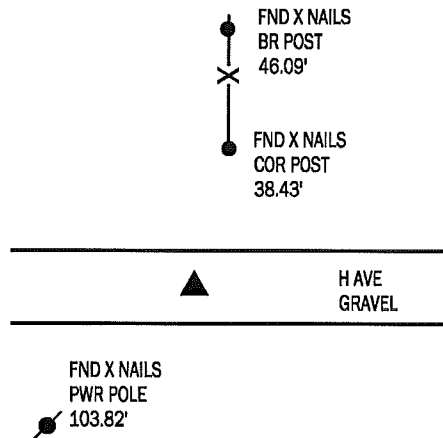


FOUND 5/8" REBAR WITH UNREADABLE YPC ABOUT 6" DEEP USING TIES RECORDED IN FEE BOOK 2006-2412. VERIFIED CORNER AND RE-TIED IT BECAUSE A FENCE AND TIES HAVE BEEN REMOVED, AND POWER POLE REPLACED. PREVIOUS TIES TO CULVERT WERE NOT MONUMENTED SO CUT X'S WERE SET AND POINTS TIED OUT.



N1/4 CORNER

FOUND 3/4" BAR 8" DEEP
 N: 7277610.57 E: 16655827.91 EL: 1406.2



USED TIES RECORDED IN FEE BOOK 2006-2410 TO FIND SPIKE OVER 3/4" BAR. MEASUREMENTS MATCH PREVIOUS TIE, EXCEPT FOR A MISSING TIE. REVIEWED TIE BY CRAWFORD INST 2002-2189 BUT DID NOT FIND CAPPED PIN. THIS CORNER IS BEING TIED DUE TO CHANGES IN THE REFERENCE MONUMENTS.

*All distances are measured horizontally unless noted.

LIST CORNERS TO BE INDEXED

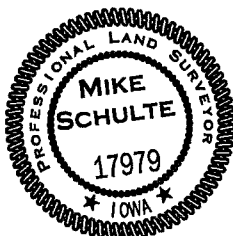
CORNER	SECTION	TWP	RANGE
NW COR	9	84	37
SW COR	4	84	37
SE COR	5	84	37
NE COR	8	84	37
N1/4 COR	9	84	37
S1/4 COR	4	84	37

BASIS OF BEARING

laRCS ZONE 6 - US SURVEY FEET
 laRTN DERIVED - NAD83(2011)(EPOCH 2010.00)

I HEREBY CERTIFY THAT THIS LAND SURVEYING DOCUMENT WAS PREPARED BY ME OR UNDER MY DIRECT PERSONAL SUPERVISION AND THAT I AM A DULY LICENSED PROFESSIONAL LAND SURVEYOR UNDER THE LAWS OF THE STATE OF IOWA.

Mike Schulte
 MIKE SCHULTE
 DATE: 2017/04/18
 LICENSE NUMBER: 17979
 LICENSE RENEWAL DATE IS DECEMBER 31, 2017
 PAGES COVERED BY THIS SEAL: 1 OF 1



SCHULTE SURVEYING, INC.

DRAWN BY: MLS
 PROJ NUMBER: 17-018