

RECEIVED mgma  
DATE OF mg  
BY mg  
COUNT 03

Crawford County Recorder  
Denise Meeves  
**Fee Book 2008-3373**  
12/17/2008 @12:15PM  
PLC PLAT CORNER CER  
Book: Page: # Pages: 1  
Total Fees: \$0.00

PREPARED BY: MICKAEL F. BERNDT - CRAWFORD COUNTY ENGINEER'S OFFICE - COURTHOUSE - DENISON, IA. - 712-263-2449

### UNITED STATES PUBLIC LAND SURVEY CORNER CERTIFICATE OF

LAND SURVEY MONUMENT SITUATED IN WILLOW TOWNSHIP, THE WEST 1/4 CORNER  
OF SECTION 11, T-83N, R-41W OF THE FIFTH P.M. CRAWFORD COUNTY, IOWA.

PREVIOUSLY RECORDED AS NO.

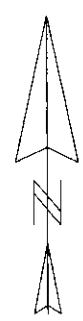
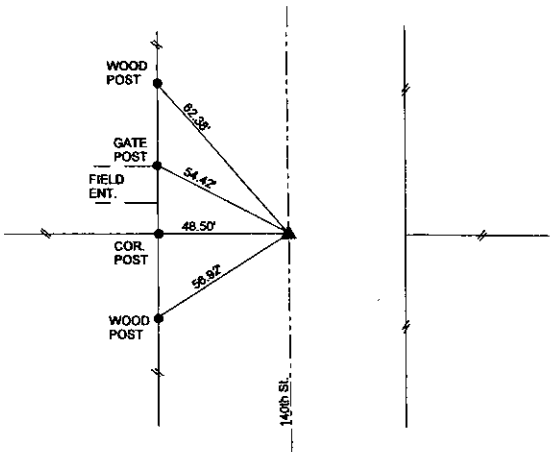
### MONUMENT DESCRIPTION AND REMARKS

WEST 1/4 CORNER SEC. 11-83-41

DATE SET: 10-21-08

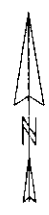
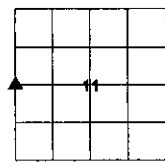
FOUND CARRIAGE BOLT TO SURFACE. THE BOLT WAS TIED OFF AND A 3" HMA OVERLAY WAS PLACED OVER  
EXISTING ASPHALT. USING PREVIOUS TIES A 1/2" DIA. X 4" CARRIAGE BOLT WAS SET BACK TO THE SURFACE.

WEST 1/4 CORNER SEC. 11-83-41



ALL DISTANCES ARE SLOPED CHAINED  
ALL TIES ARE "X" NAILS UNLESS NOTED.

CORNER: WEST 1/4  
SECTION: 11  
TOWNSHIP: 83N  
RANGE: 41W



**CERTIFICATION:**  
I HEREBY CERTIFY THAT THIS LAND SURVEYING DOCUMENT WAS PREPARED AND THE RELATED SURVEY WORK WAS PERFORMED BY ME OR UNDER MY DIRECT PERSONAL SUPERVISION AND THAT I AM A DULY LICENSED LAND SURVEYOR UNDER THE LAWS OF THE STATE OF IOWA.

Michael F. Berndt      10-21-08  
Signature      Date of Survey

MICKAEL F. BERNDT      14808      Dec. 31, 2010  
Typed Name      L.S. No.      License Renewal Date

Pages covered by this seal 1

