


INDEXED 17 17
 FOLLOW UP _____
 RECORDED _____
 SIGNED 17

□□ 
 Crawford County Recorder Denise Meeves
 Fee Book 2007-0166 REC013191
 01/17/2007 @1120AM # Pages 1
 PLC PLAT CORNER CER
 Total Fees: \$0.00

PREPARED BY: MICKAEL BERNDT
 CRAWFORD COUNTY ENGINEERS OFFICE - COURTHOUSE - DENISON, IA. - 712-263-2449

**UNITED STATES PUBLIC LAND SURVEY CORNER CERTIFICATE
 OF**

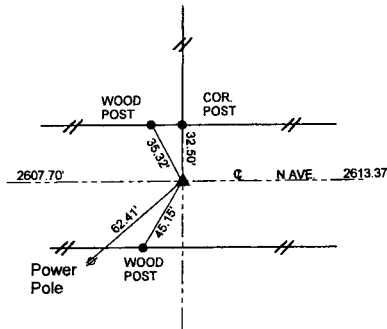
LAND SURVEY MONUMENT SITUATED IN WILLOW TOWNSHIP, THE NORTH 1/4 CORNER
 OF SECTION 11, T-83N, R-41W OF THE 5TH P.M. CRAWFORD COUNTY, IOWA.

PREVIOUSLY RECORDED AS NO.

MONUMENT DESCRIPTION AND REMARKS

NORTH 1/4 CORNER SEC. 11-83-41
 6-16-05
 THE CORNER WAS ESTABLISHED ON A STRAIGHT LINE BETWEEN THE NE COR. AND THE NW COR.
 OF SEC. 11 AND IN LINE WITH THE FENCE RANGING NORTH. A REBAR WAS SET AND TIED OFF IN PREPARATION
 OF COUNTY GRADING IN 2006.
 10-17-06
 GRADING ON THE ROAD WAS COMPLETED AND THE CORNER WAS SET BACK. A 5/8" X14" REBAR WITH YELLOW
 CAP #14808 WAS SET 10" DEEP AND TIED OFF.

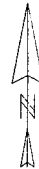
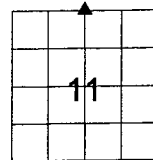
NORTH 1/4 CORNER SEC. 11-83-41



ALL DISTANCES ARE SLOPED CHAINED

All ties are "X" nails unless otherwise noted.

CORNER: NORTH 1/4
 SECTION: 11
 TOWNSHIP: 83N
 RANGE: 41W



CERTIFICATION:

I HEREBY CERTIFY THAT THIS LAND SURVEYING DOCUMENT WAS PREPARED AND THE RELATED
 SURVEY WORK WAS PERFORMED BY ME OR UNDER MY DIRECT PERSONAL SUPERVISION AND
 THAT I AM A DULY LICENSED LAND SURVEYOR UNDER THE LAWS OF THE STATE OF IOWA.

Mickael F. Berndt

1-17-07

Signature

Date of Survey

Mickael F. Berndt

14808

Dec. 31, 2008

Typed Name

L.S. No.

License Renewal Date

Pages covered by this seal: 1

