

INDEXED Tom DM  
FOLLOW UP \_\_\_\_\_  
PROOFED \_\_\_\_\_  
SCANNED DM



Crawford County Recorder Denise Meeves  
Fee Book 2006-3103 REC012433  
11/02/2006 @1020AM # Pages 1  
PLC PLAT CORNER CER  
Total Fees: \$7.00

PREPARED BY: JOHN A. MUNSON III - SUNDQUIST ENGINEERING - 910 SEVENTH STREET, ONAWA, IOWA 51040-PHONE (712)423-3131

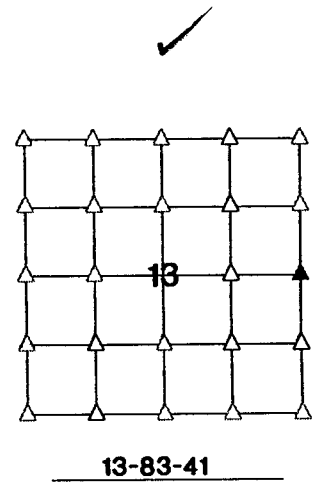
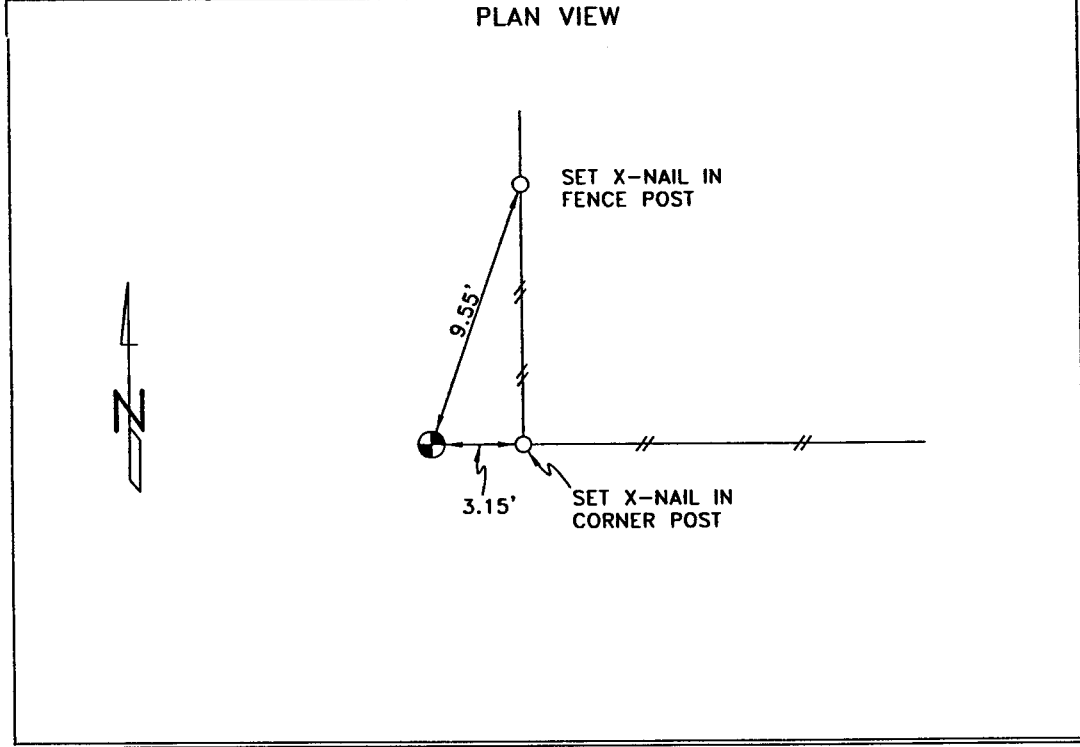
**UNITED STATES PUBLIC LAND SURVEY CORNER CERTIFICATE OF**  
LAND SURVEY MONUMENT SITUATED IN SECTION 13, TOWNSHIP 83 NORTH, RANGE 41 WEST  
OF THE FIFTH PRINCIPAL MERIDIAN, CRAWFORD, COUNTY, IOWA.  
PREVIOUSLY RECORDED IN \_\_\_\_\_ IN COUNTY RECORDERS OFFICE.

**MONUMENT DESCRIPTION AND REMARKS**

EAST QUARTER CORNER SECTION 13-83-41  
FOUND CONCRETE MONUMENT WITH TOP BROKE OFF. TOP OF CONCRETE MONUMENT BASE IS 0.50' ABOVE GROUND.  
CONCRETE MONUMENT ON LINE WITH FENCE EAST.

L. STUKENHOLTZ & R. ANDERSON

DATE 7-6-06



I HEREBY CERTIFY THAT THIS LAND SURVEYING DOCUMENT AND THE RELATED SURVEY WORK WAS PERFORMED BY ME OR UNDER MY DIRECT PERSONAL SUPERVISION AND THAT I AM A DULY LICENSED LAND SURVEYOR UNDER THE LAWS OF THE STATE OF IOWA.

John A. Munson III 10-31-06  
JOHN A. MUNSON III DATE

IA. LICENSE NO. 11118 EXP. DATE DECEMBER 31, 2006  
SE PROJECT NO. 23206T1 DRAWN BY: CSL

