


RECEIVED _____
 FOLLOW UP _____
 PRINTED _____
 SCAINED _____


 Crawford County Recorder Denise Meeves
 Fee Book 2007-0165 REC013190
 01/17/2007 @11:17AM # Pages 1
 PLC PLAT CORNER CER
 Total Fees: \$0.00

PREPARED BY: MICKAEL BERNDT
 CRAWFORD COUNTY ENGINEERS OFFICE - COURTHOUSE - DENISON, IA. - 712-263-2449

UNITED STATES PUBLIC LAND SURVEY CORNER CERTIFICATE OF

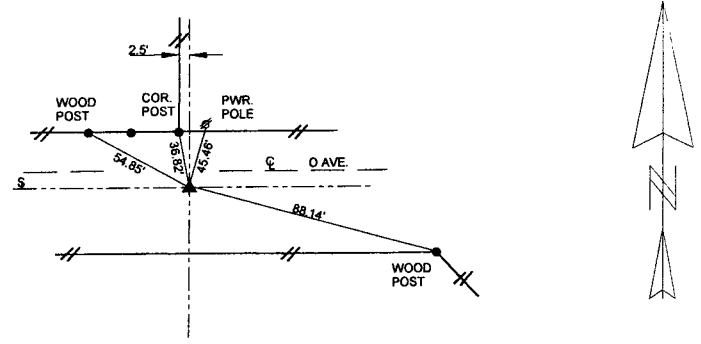
LAND SURVEY MONUMENT SITUATED IN WILLOW TOWNSHIP, THE NORTH 1/4 CORNER
 OF SECTION 13, T-83N, R-41W OF THE 5TH P.M. CRAWFORD COUNTY, IOWA.

PREVIOUSLY RECORDED AS NO. _____

MONUMENT DESCRIPTION AND REMARKS

NORTH 1/4 CORNER SEC. 13-83-41
 10-6-04
 FOUND 4"X10"X15" ROCK 1' DEEP, SET 5/8" REBAR ON WEST SIDE TO HELP IN LOCATION OF ROCK.
 CORNER WAS TIED OFF. COUNTY TO GRADE ROAD IN 2006.
 10-17-06
 GRADING ON THE ROAD WAS COMPLETED AND THE CORNER WAS SET BACK. A 5/8" X14" REBAR WITH YELLOW
 CAP #14808 WAS SET 12" DEEP AND TIED OFF.

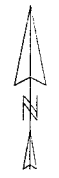
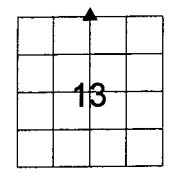
NORTH 1/4 CORNER SEC. 13-83-41

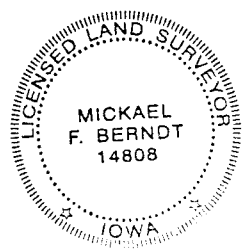


ALL DISTANCES ARE SLOPED CHAINED

All ties are "X" nails unless otherwise noted.

CORNER: NORTH 1/4
 SECTION: 13
 TOWNSHIP: 83N
 RANGE: 41W



CERTIFICATION: I HEREBY CERTIFY THAT THIS LAND SURVEYING DOCUMENT WAS PREPARED AND THE RELATED SURVEY WORK WAS PERFORMED BY ME OR UNDER MY DIRECT PERSONAL SUPERVISION AND THAT I AM A DULY LICENSED LAND SURVEYOR UNDER THE LAWS OF THE STATE OF IOWA.			
<i>Mickael F. Berndt</i> Signature	1-17-07 Date of Survey		
Mickael F. Berndt Typed Name	14808 L.S. No.	Dec. 31, 2008 License Renewal Date	
Pages covered by this seal: <u>1</u>			