

Instrument #: 2022-2851
 11/23/2022 02:23:31 PM Total Pages: 1
 PLC PLAT COR CERT
 Recording Fee: \$7.00 Transfer Tax: \$0
 Denise Meeves, Recorder, Crawford County Iowa



WILKE LAND SURVEYING INC. 401 1800th Street Panama, Iowa 51562 (712)489-2898

UNITED STATES PUBLIC LAND SURVEY CORNER CERTIFICATE

SECTION 16 TOWNSHIP 83N RANGE 41W COUNTY Crawford

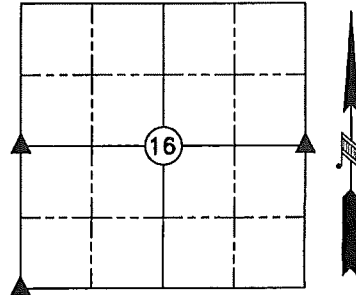
Reason for Certificate: Survey in the NW1/4 SW1/4

Monument Description and Remarks:

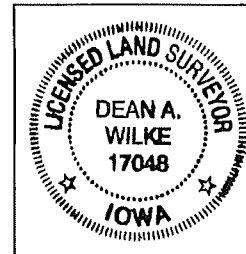
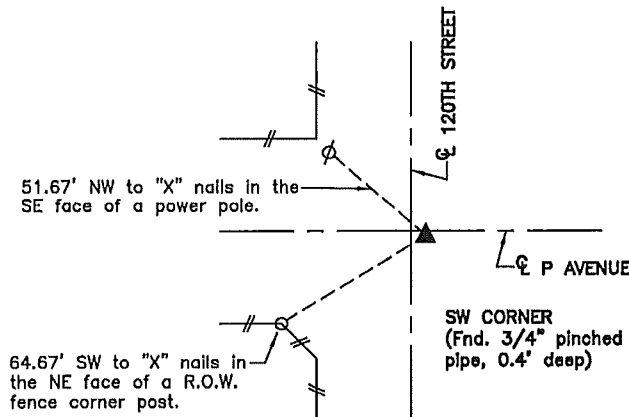
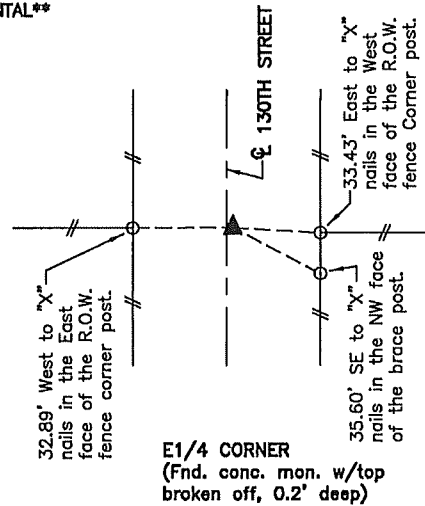
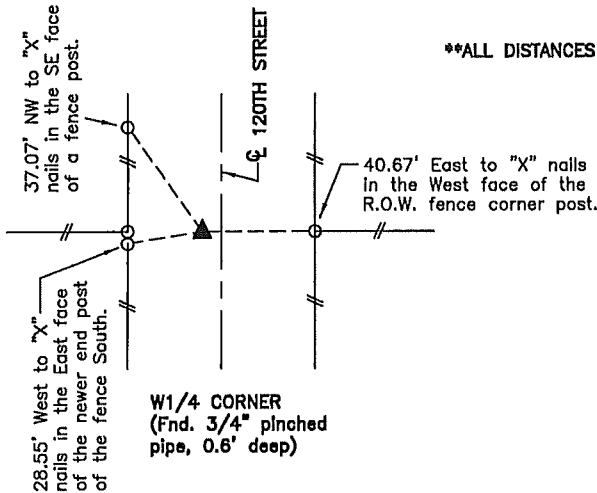
W1/4 CORNER – Found a 3/4" diameter pinched pipe (0.6' deep) in line with fences East & West. Said monument is ±5' West of the physical centerline of 120th Street.

E1/4 CORNER – Found a concrete monument with the top broken off (0.2' deep). The monument is in line with the fence West, ±1.5' North of the fence East, and ±1.5' East of the physical centerline of 130th Street.

SW CORNER – Found a 3/4" diameter pinched pipe (0.4' deep) in the intersection of 120th Street & P Avenue. The monument is ±3' East of the physical centerline of 120th Street and ±1.5' South of the physical centerline of P Avenue.



****ALL DISTANCES ARE HORIZONTAL****



List Corners to be Indexed			
Corner	Section	Twp.	Range
W1/4 CORNER	16	83N	41W
E1/4 CORNER	16	83N	41W
SW CORNER	16	83N	41W

I hereby certify that this land surveying document was prepared and the related survey work was performed by me or under my direct personal supervision and that I am a duly Licensed Land Surveyor under the laws of the State of Iowa.

Dean A. Wilke 11/21/22
 Dean A. Wilke Dg/c

License number 17048

My license renewal date is December 31, 2023

Pages or sheets covered by this seal: This page only