

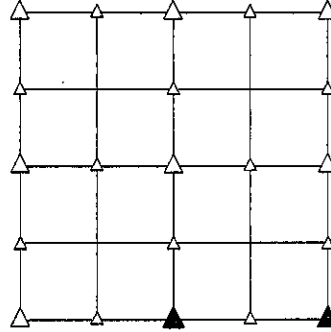
PREPARED BY - JOSEPH P. RUESCHENBERG - SUNDQUIST ENGINEERING - 120 S. MAIN, DENISON, IOWA 51442 - PHONE (712) 263-8118

**UNITED STATES PUBLIC LAND SURVEY CORNER CERTIFICATE  
 OF**

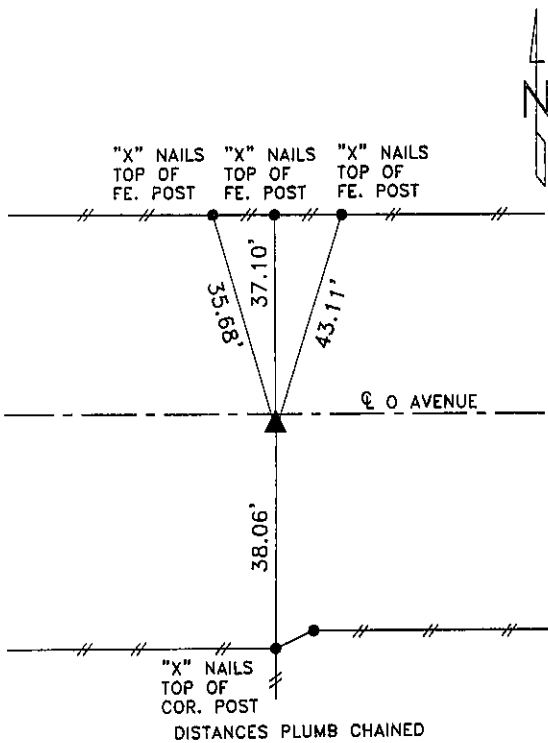
LAND SURVEY MONUMENT SITUATED IN SECTION 9, T 83 N, R 41 W OF  
 THE 5TH P.M., CRAWFORD COUNTY, IOWA.  
 PREVIOUSLY RECORDED IN BOOK \_\_\_\_\_, PAGE \_\_\_\_\_, OTHER \_\_\_\_\_

**MONUMENT DESCRIPTION AND REMARKS**

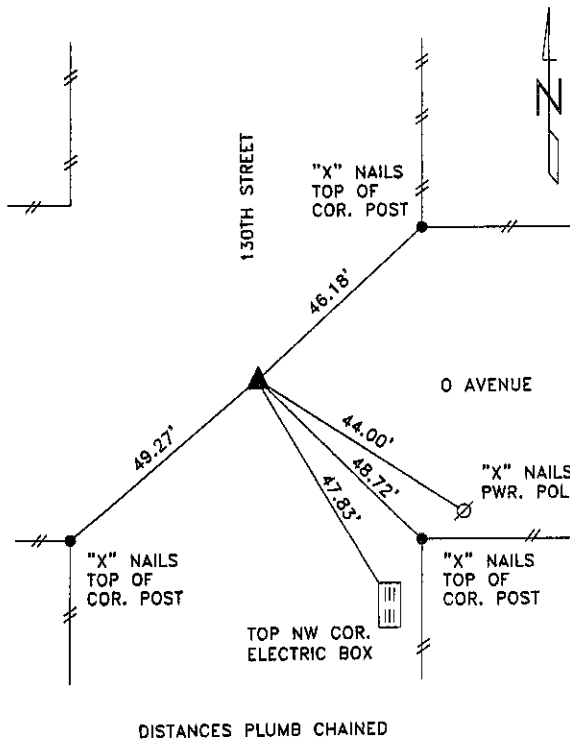
S1/4 CORNER - SET 5/8" DIA. X 18" IRON PIN W/ORANGE CAP  
 #14709 0.3' DEEP, RESET FROM LOCAL EVIDENCE.  
 SE CORNER - FOUND 5/8" DIA. IRON PIN 0.6' DEEP.



**PLAN VIEW SHOWING RELATIVE LOCATION OF MONUMENT AND REFERENCE POINTS.**



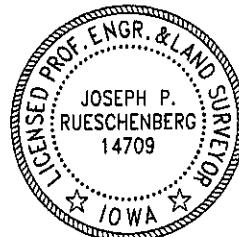
S1/4 CORNER SECTION 9-83-41



SE CORNER SECTION 9-83-41

I HEREBY CERTIFY THAT THIS LAND SURVEYING DOCUMENT WAS PREPARED AND THE RELATED SURVEY WORK WAS PERFORMED BY ME OR UNDER MY DIRECT PERSONAL SUPERVISION AND THAT I AM A DULY LICENSED LAND SURVEYOR UNDER THE LAWS OF THE STATE OF IOWA.

*Joseph P. Rueschenberg*  
 JOSEPH P. RUESCHENBERG  
 IA LICENSE NO. 14709  
 DATE **OCT 29 2007**  
 EXP. DATE DECEMBER 31, 2008



SE PROJECT NO. 24907  
 DRAWN BY: LLL